

# K17T

TRAILER MOUNT

The K17T is yet another product from the well proven stable of Aerial work platforms. This trailer is the successor to the K16T, the former access market leader. The K17T offers the user the highest standard of quality that you would expect from an Aerial product.

With 17.00m working height, 9.10m outreach and 140° fly boom complete with 90° basket rotation and 680° of superstructure rotation. The K17T offers the operator the best possible working facilities. With a low towing weight of only 1950kg (mains power), moving the K17T from site to site is easily achieved with a suitable vehicle.

The low towing weight together with easy to use controls, hydraulic outriggers, unrivalled safety features and optional extra on-board friction drive system, ensure the new K17T is quick, simple and safe to use and guarantee it is once again one of the most versatile trailer mounts in it's class.

- 17.00m Working Height
- 9.10m Outreach
- 680° Rotation
- 215kg Safe Working Load
- Emergency lowering from the basket
- Dual fuel option
- Combination Articulated boom with top telescope
- 140° Flick boom complete with basket rotation

“Simple, Solid, Safe”



# AERIAL

**AERIAL**

# Aerial K17T

The new K17T follows on from the K16T, offering more unique benefits and features, satisfying even the most demanding user.

The K17T trailer mount offers 17.00m working height, 9.10m outreach (with a full 215kg SWL) and 680° rotation. It is fully road towable and can be easily moved around site by utilising the (optional) on-board friction drive system

Once in position, the K17T can be easily and quickly set up using the hydraulic outriggers, even on sloping or uneven ground. The pressure sensitive outriggers are interlocked, with a user friendly LED display, to prevent boom operation until the outriggers are set safely. All other hydraulic functions are operated via simple full pressure proportional hydraulic controls.

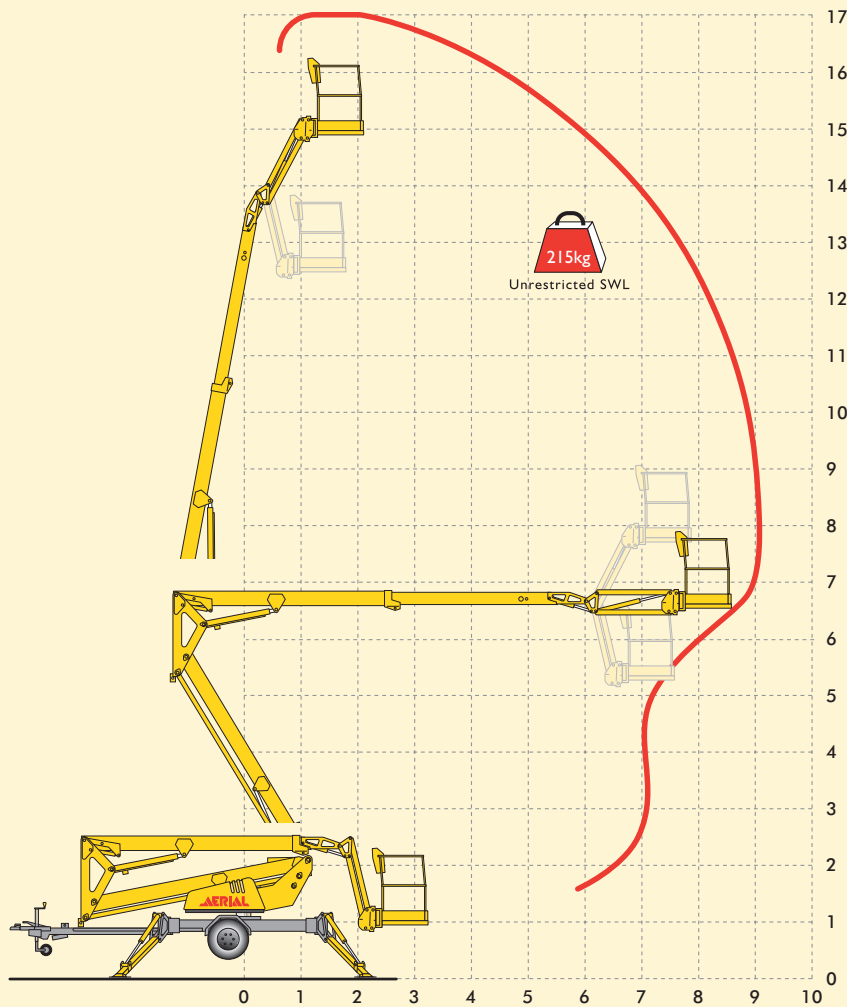
By utilising the combination of an articulated "up and over" bottom boom, together with a top telescopic boom, the operator benefits from the best "up and over" capability together with a practical working outreach of 9m +. Areas which were formerly difficult to access, can now be reached with ease and in complete safety. The heavy duty steel boom and basket design gives the operator a working platform of unrivalled rigidity for this type of access platform.

As with all Aerial products, the K17T is CE marked and complies with all relevant standards and EC directives. Full failsafe outrigger interlocks and hydraulic circuits protect operators from unsafe use or hose failure. Electric emergency lowering is standard from the basket and manual emergency controls at ground are provided in the event of a power loss. You can even raise the hydraulic outriggers in case of complete power failure using the hand pump provided.

The K17T is engineered and built to last. Robust steel construction, fully bushed pivots, quality components and tough durable paint finish provide long term reliability and protection against wear and tear.

Aerial have third party accreditation to ISO 9001 and are an IPAF approved training provider. From a dedicated customer support and spare parts centre in Sheffield, Aerial provide a level of support difficult to match, there are now over 80 mobile engineers working from 4 Service Centres.

The K17T is a simple, robust high quality trailer mounted platform which is backed by unrivalled sales support, from a long established British Manufacturer; it's a combination which is hard to beat!



## Operating Dimensions

Max. Working Height	17.00m
Max. Platform Height	15.00m
Max. Working Outreach	9.10m
Capacity (SWL)	215kg
Outrigger footprint	4.65m x 4.65m
Rotation (non-continuous)	680°
Basket Rotation	90°

## Basket Dimensions

Depth	0.80m
Width	1.20m
Guard Rail Height	1.10m
Toeboard Height	0.15m

## Closed Dimensions

Overall Height	2.10m
Overall Length	7.10m
Width	1.75m
Weight (240v mains)	1950kg*
Weight (24vdc)	2250Kg*

## Control Systems

Controls	Full proportional hydraulic controls at ground and basket.
Power Source	24v Battery 4 x 6v, 250Ahr 230v Mains with optional removable 230v Mains Generator Bi-Fuel (Battery & I/C Engine)
Charger (battery model)	IP67 rated automatic voltage sensing fitted with 'charge and run' facility.

## Chassis and Superstructure

Chassis	Full steel construction, tough, durable paint finish
Superstructure	Full steel construction, tough, durable paint finish.
Trailer complete with automatic reversing and overrun braking, integral lighting board.	
Optional Extras Friction drive for effortless on site one man movement of machine on hard standing. Hour run clock, Flashing Beacon, spotlight in cage, GRP Cage, Generator for battery charging.	
* Machine towing weight depends on power configuration and supply of optional extras	

## Safety

Full failsafe hydraulics, load sensing outrigger interlocks fitted with user friendly LED display. Electric emergency lowering from basket. Designed to meet all European safety legislation.



This product sheet is intended for general information only and as such is not legally binding, nor does it form part of a contract. All dimensions are approximate. The manufacturer reserves the right to alter or improve specifications without notice.

