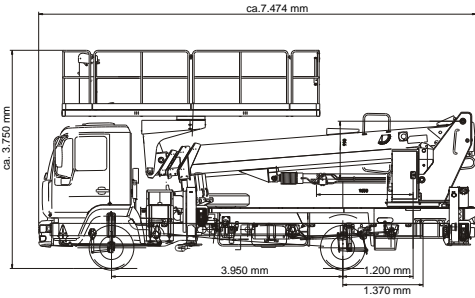




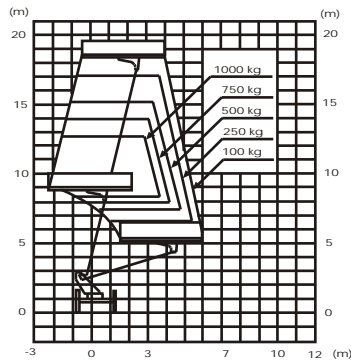
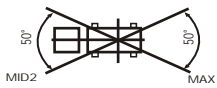
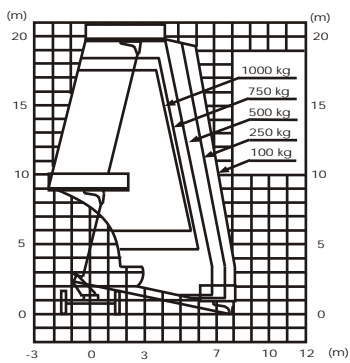
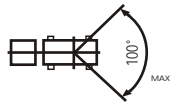
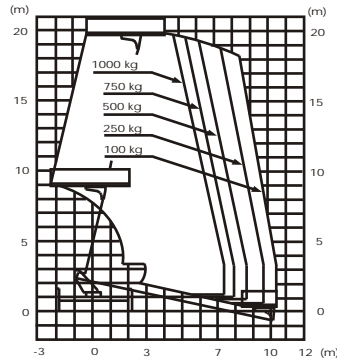
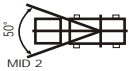
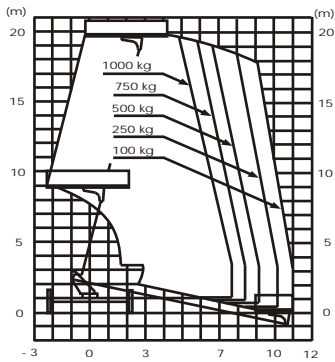
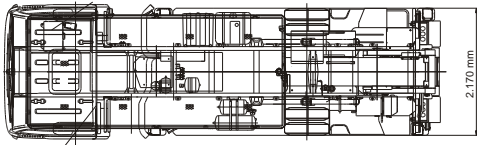
 **NACHI**

TZ 20A

# Specifications of the TZ-20A



The dimensions depend on chassis.



Model Number & Name	
TZ-20 A Heavy Load Aerial Platform	

Work Platform	
Max. Load	1.000 kp
Max. Height from the Ground	19.70 m
Max. Work Range (1.000 kg)	7,5 m
Max. Outreach (150 kg)	11,0 m
Inside Dimensions W x D x H	1,94 m x 4,4 m x 1,1 m
Rotation Angle	360° (all around)

Boom	
Type	4 step simultaneous telescopic
Length	5.40 ~ 16.39 m
Extension Stroke	10,99 m
Raising Angle	-15° ~ +79°
Raising & Lowering Speed	55 s (Raising), 55 s (Lowering)
Extension & Retraction Speed	+/- 10s 0.18 m/s

Turntable	
Rotation Angle	360° (all around)
Rotation Speed	1,0 rpm

Outrigger	
Stretch Width	1,990 ~ 4,420 m
Stroke	1,215 m
Jack Stroke	0,645 m

**Safety System**  
 Hydraulic Circuit (safety valve, jack extension/retraction safety system, boom extension/retraction safety system, Platform leveling system), Separate Work range limiting system by form interference prevention system, Boom/cabin interference prevention system, Voice warning system, Boom interlock system, Jack interlock system, Boom raising, lowering and rotation limiting system, Stop switch, Emergency pump, Lever guards, Foot pedal deadman control.

**Other Operator Friendly Systems**  
 Vertical linear movement, Linear movements on horizontal plane, Automatic platform stowing system, Engine start, stop switch, Automatic acceleration of the engine, Checking system before starting to work, Illumination on the control, Rotation lathe cover, Boom sweeper, Level gauge.

**Optional Equipment**  
 Blinking lights on the outriggers, Lighting lamp at the platform, Save

**Standard Zubehör**  
 Lastverteilungsplatten, Bremsklötze, Ablagefächer

Fahrgestell	
MAN 9.185 LC	9,0 t zulässiges Gesamtgewicht
Länge	7,47 m
Breite	2,17 m
Transporthöhe	3,75 m
Radstand	3,950 m
Gesamtgewicht incl. 2 Personen	ca. 8.730 kg

Technische Änderungen vorbehalten!