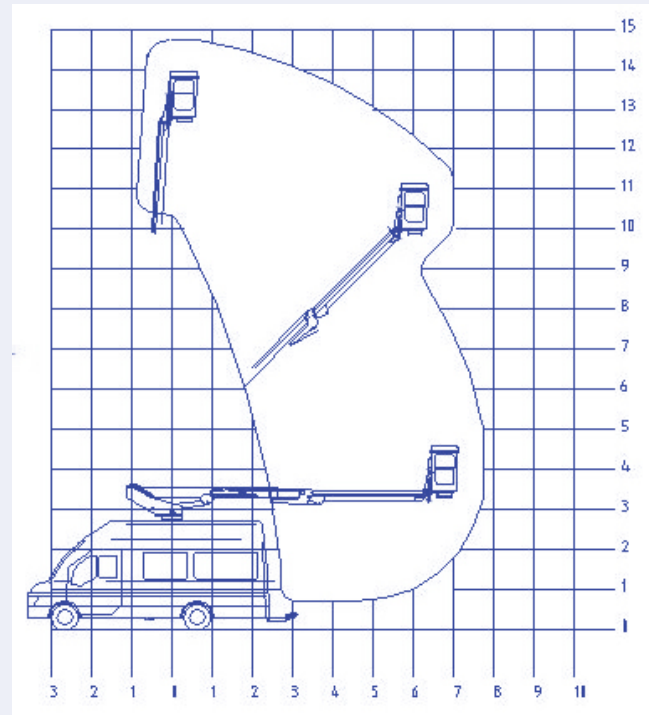




Ascendant 15VM



Special features

- A spare payload capacity of 1000kg.
- Safe working load of 230kg.
- Two section telescopic plus flyboom lift mechanism with zero tailswing.
- Full pressure proportional hydraulic controls.
- Engine stop start at platform controls.
- Stabiliser controls in cab with automatic activation of platform control when set.
- DC power pack for emergency operation of booms and stabilisers, plus manual rotation and descent.
- Jacks/boom and PTO/handbrake interlocks
- Warning lights for:
 - booms not stowed
 - jacks not stowed
 - PTO engaged

Vehicle specifications

- Maximum working height 14.9m
- Maximum platform height 12.9m
- Max. working outreach 7.7m
- SWL 230kg
- Flyboom length..... 2900mm
- SWL 90°
- Platform dimensions 0.8 x 1.3 x 1.1m
- Stabiliser spread 3.2m
- Kerb weight (IVECO 50C15 3.3m).....4050kg

Typical chassis

- GVW..... 5200kg
- Wheelbase 3300mm
- Travel length 7.4m
- Travel width 2.4m
- Travel height 3.6m

