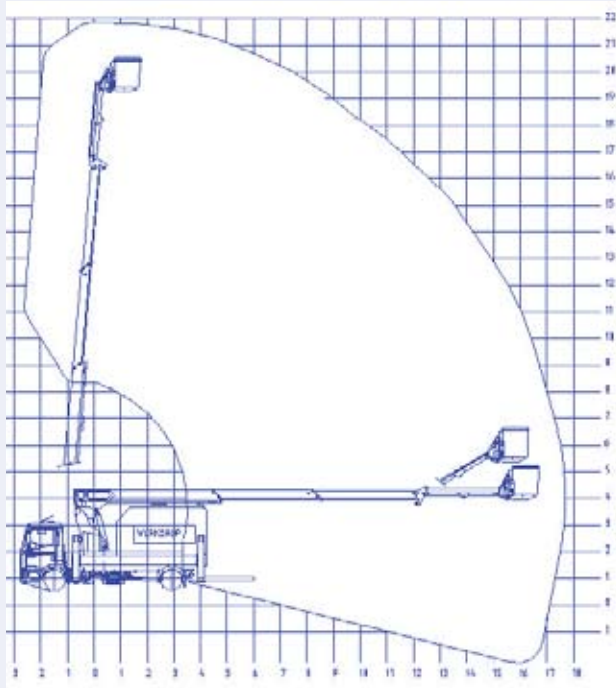






## Ascendant A22 - 17TR 18 Tonne truck mounted telescopic platform



### Special features

- Large, 3-person GRP cage with self-closing walk-in door, rated at 100V insulation
- 3-stage telescopic boom plus 2.4m flyboom with 125° operating arc
- Full pressure proportional hydraulic controls
- Full outreach with narrow jacking
- DC power pack plus handpump emergency operation
- Jacks/boom and PTO/handbrake interlocks
- Motorway spec GRP box body with access to cage and workshop from rear deck
- Platform overload alarm
- Cab and jack collision protection
- Warning lights for:
  - booms not stowed
  - jacks not stowed
  - insufficient jack ground pressure
  - cab protection area

### Vehicle specifications

- Maximum working height ..... 22.0m
- Maximum platform height ..... 20.0m
- Max. working outreach ..... 17.0m
- SWL ..... 280kg
- Platform dimensions ..... 1.0 x 1.8 x 1.1m
- Platform rotation..... 160°
- Operating width ..... 2.4m
- Kerb weight (approx, inc. body) ..... 16,000kg

### Typical chassis

- GVW..... 18000kg
- Wheelbase ..... 4500mm
- Travel length ..... 9.0m
- Travel width ..... 2.4m
- Travel height ..... 3.9m

