

S 50 MDT^{ER}



BRONTO SKYLIFT

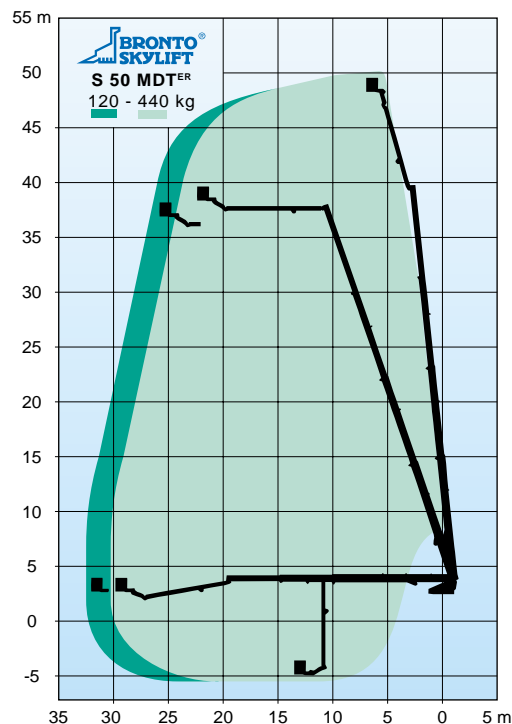


TECHNICAL SPECIFICATION

Working height	appr. 50.0 m
Height to working cage floor	appr. 48.0 m
Max working outreach	appr. 33.7 - 30.7 m
Safe working load	120 - 440 kg
Rotation, continuous	360°
Transport height (depending on chassis)	3.6 - 3.8 m
Transport length (depending on chassis)	12.5 m
Transport width	2.5 m
Working cage	0.9 x 2.2 x 1.1 m
GVW	26 ton

STANDARD FEATURES

- Multiple working cage system
- Bronto+ ; variable jacking / outreach / cage load system
- Bronto auto-jacking
- Identical control stations in the working cage and at the turntable with joystick control levers
- Back light illumination of the control panels
- Turntable control station with platform and seat
- Ramp system and movement speed slow-down for all boom movements
- Safety switches for extension chains
- Automatical interlock system
- Continuous rotation
- Back-up system for hydraulics by battery pump and bleed down
- Outrigger control panel at the rear of vehicle
- Intercom system
- Wind speed gauge
- Aluminium decking with steps
- CE and EMC Certification
- Mountable onto various standard chassis



Alterations reserved.