

# S 88 HLA



BRONTO SKYLIFT



## TECHNICAL SPECIFICATION

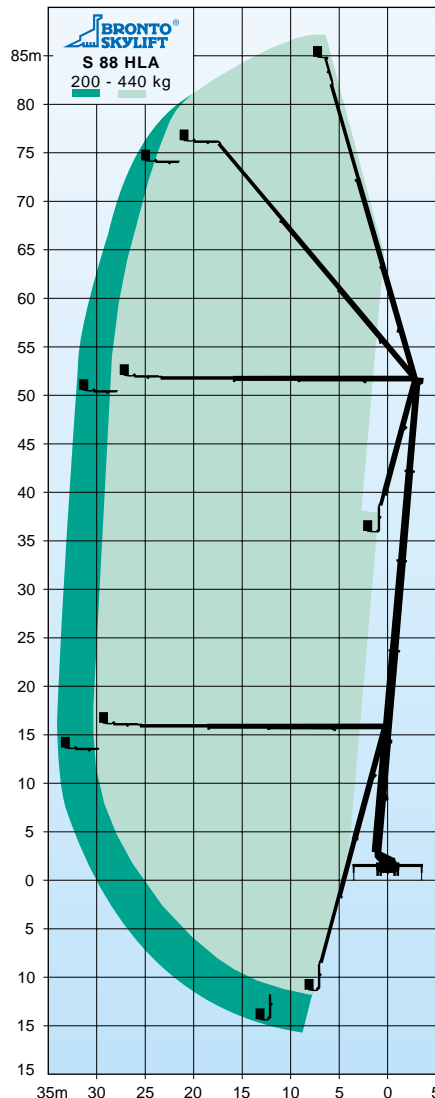
<b>Working height appr.</b>	<b>87.2 m</b>
<b>Height to working cage floor</b>	<b>85.2 m</b>
<b>Max. working outreach</b>	<b>34.0 m</b>
<b>Safe working load</b>	<b>440 kg</b>
<b>Transportation height *</b>	<b>3.95 m</b>
<b>Transportation length *</b>	<b>15.0 m</b>
<b>Transportation width</b>	<b>2.5 m</b>
<b>Working cage</b>	<b>0.9 x 2.2 x 1.1 m</b>
<b>GWV with chassis*</b>	<b>47500 kg</b>

\* depending on chassis

## STANDARD FEATURES

- Identical control stations in the working cage and at the turntable with joystick control levers
- Back light illumination of the control panels
- Multiple working cage system
- Turntable control station with platform and seat
- Bronto+ ; outreach / cage load
- Ramp system and movement speed slow-down for all boom movements
- Safety switches for extension chains
- Automatical interlock system
- Continuous rotation
- Back-up system for hydraulics by battery pump and bleed down
- Outrigger control panel at the rear of vehicle
- Bronto Autojacking
- Aluminium decking with steps
- CE and EMC Certification
- Mountable onto various standard chassis

Alterations reserved.



# S 88 HLA