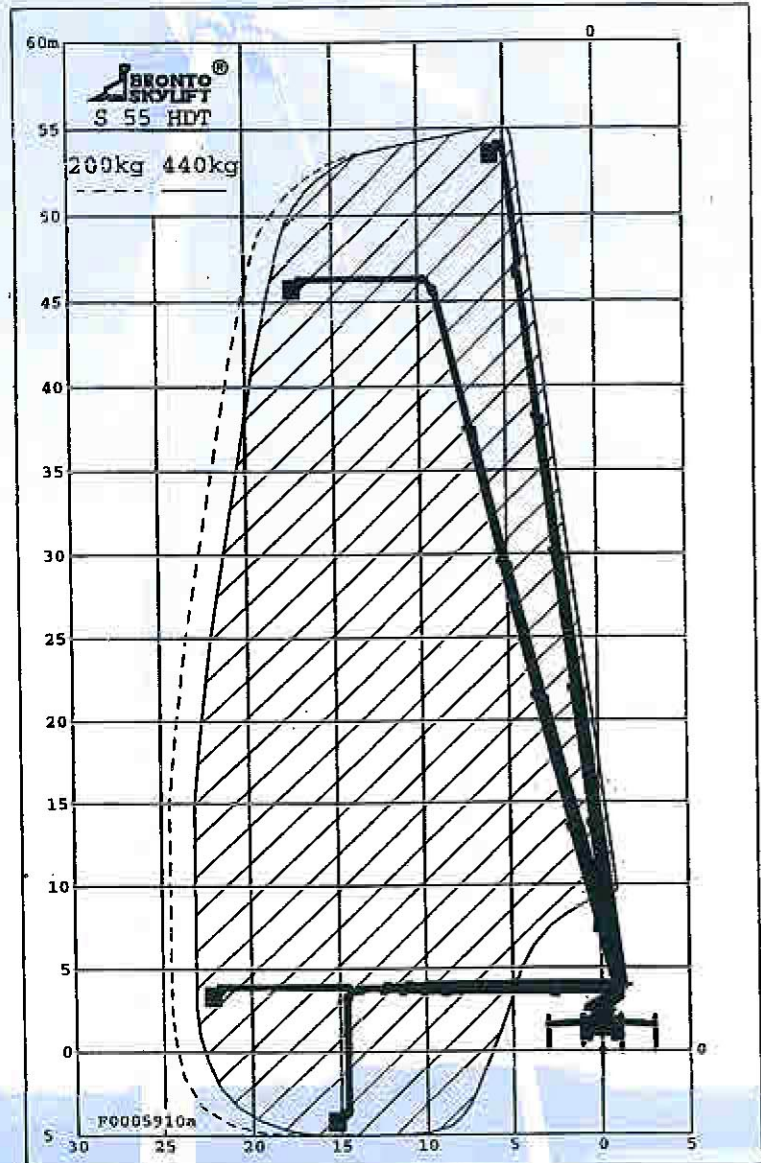
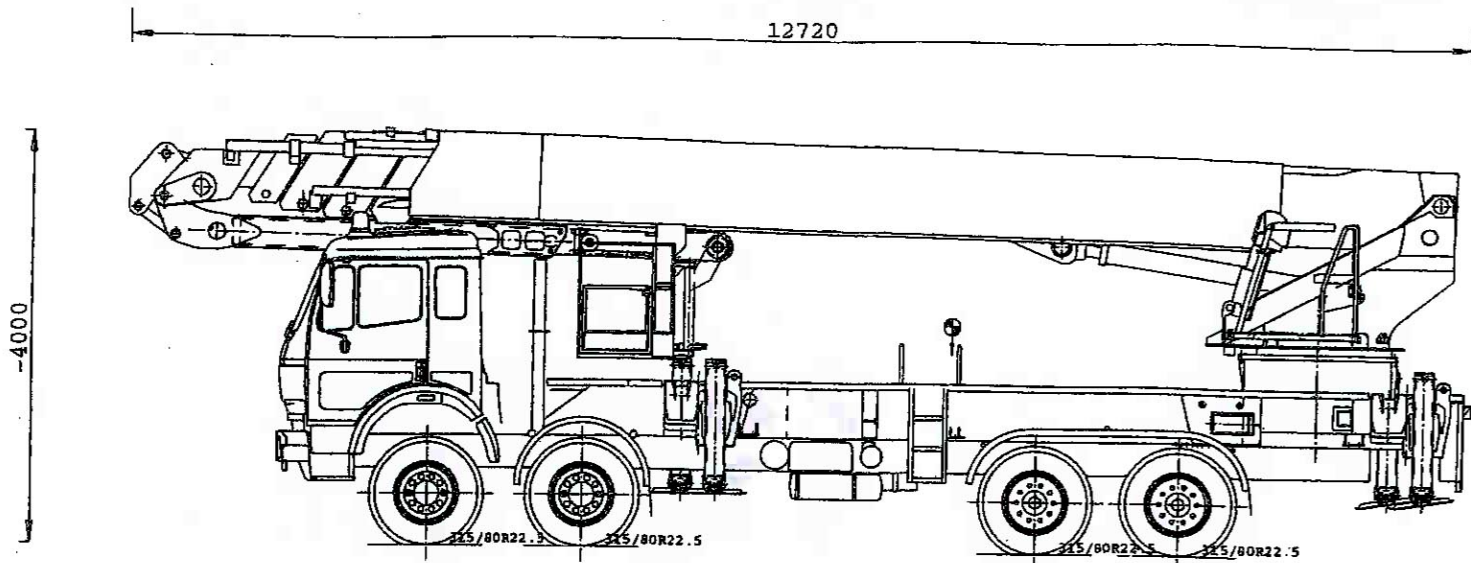


S 55 HDT



Working height	55,0
Height to working cage floor, m	53,0
Working outreach, m	23,4/24,7
Outreach to cage corner, m	22,7/24,0
Safe working load, kg	440/200
Rotation	cont.
Transport height, m	4,0
Transport length, m	12,8
Transport width, m	2,5
Outrigger width (C/C), m (front)	6,0
(rear)	6,0
Weight, ton	20,5 – 21,3
Working cage, m	0,9x2,0x1,1
GVW, kg	32000

SKYLIFT



Drive
Wheelbase (WB)
Engine governor
PTO

8 x 4 / 4
5600...6500 mm
RQV
Gear box mounted with any size flange
(ZF PTO, type 2b)
Ratio $i = 1,0...1,5$
Front and rear recommended

Stabilizers

Chassis recommendations

MB 3535 / 8 x 4 / 4 / 5900
VOLVO FL10 / 8 x 4 / 5600
SCANIA P113 / 8 x 4 / 6500

S 55 HDT

- Electro-hydraulic control system
- Joystick control levers for boom movements in the cage, and at the turntable
- Electronic cage levelling system
- Double cage load/outreach system to be chosen from 120/200/280/440 kg
- Safety switches for extension chains
- Overload signal lights in the cage and at the turntable controls
- Double safety switches for outreach limitation and rotation
- Slow speed movement before meeting outreach limit
- Engine start prevention gear connected
- Automatic interlock system to prevent the lifting of the booms when the outriggers are in transport position
- Signal lights for outriggers and boom transport position in driver's cab
- Cabin protection
- Back-up system for hydraulics by battery pump
- Push button in the cage for sound signal
- Turntable rotation continuous
- Cover plate to boom side
- Cloth covered turntable
- Aluminium decking with hot dip galvanized frame
- Steps with railings at each side of the vehicle
- Fixing of spare wheel on the decking
- Outrigger ground pads with brackets
- One locker at the rear of the vehicle with hinged door for outrigger control panel
- Outrigger ground pads with brackets
- Flashlights for outriggers
- Side lights (yellow)
- Wheel chocks with brackets (2 pcs)
- Plastic mudguards for two rear axles
- Mounting on chassis