

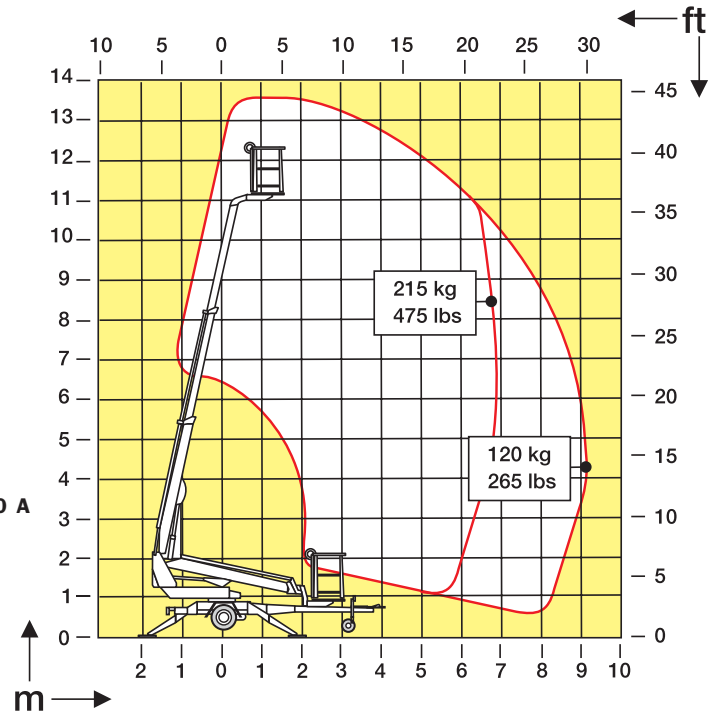
DINO® I35T

Compact, yet with large outreach



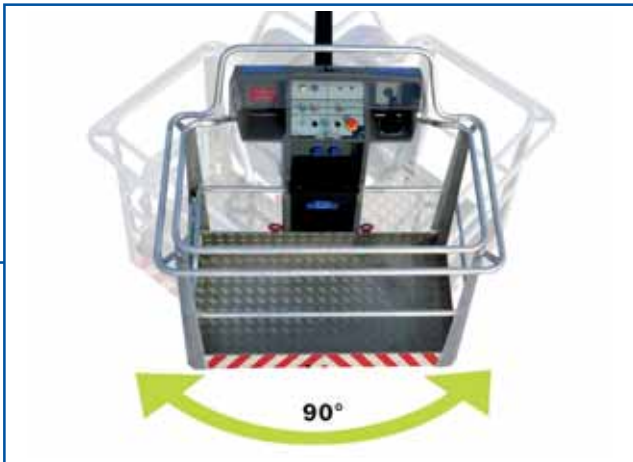
Technical specification on **DINO® I35T**

Working height	13.5 m	44'5"
Platform height	11.5 m	37'10"
Sideways outreach	9.1 m	29'10"
Support width	3.8 m	12'6"
Lifting capacity	215 kg	475 lbs
Basket size	0.7 x 1.3 m	2'4" x 4'3"
Boom rotation	continuous	continuous
Basket rotation	90°	90°
Boom control	proportional	proportional
Transport length	5.91 m	19'5"
Transport width	1.78 m	5'10"
Transport height	2.05 m	6'9"
Weight	1580 kg	3480 lbs
Driving system	standard	standard
AC socket in the basket x 2	standard	standard
Power supply	110/230 VAC / 10 A	110/230 VAC / 10 A
Gradeability	25 %	25 %
Petrol aggregate	optional	optional



The specification is subject to change without notice.

02/2005 Primuspaino Oy



The ergonomic design enables easy use of the driving system.



The control devices are uncomplicated.



Easy towability of the DINOs is a concept.

DINO® and Dino Lift® are trademarks registered by the company Dino Lift Oy.