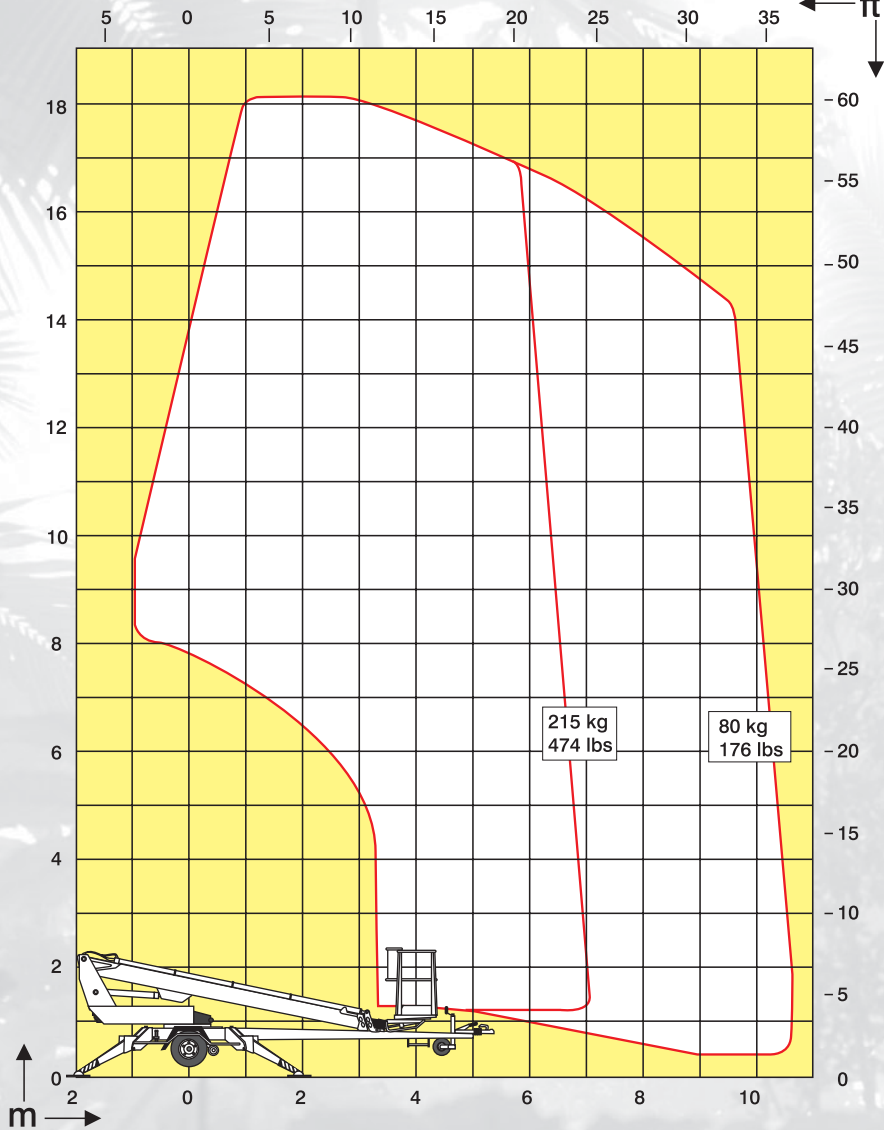


DINO[®] 180T

A stable and reliable work platform



Technical specification on DINO® 180T



Max. working height	18.0 m	59'
Max. platform height	16.0 m	52'5"
Maximum outreach	10.7 m	35'
Support width	3.8 m	12'6"
Lifting capacity	215 kg	475 lbs
Basket size	0.7 x 1.3 m	2'4" x 4'3"
Boom rotation	continuous	continuous
Basket rotation	90°	90°
Boom control	proportional	proportional
Transport length	7.35 m	24'1"
Transport width	1.78 m	5'10"
Transport height	2.05 m	6'9"
Weight (with driving system)	1780 kg	3920 lbs
Driving system	standard	standard
AC-socket in the basket	standard	standard
Power supply	110 VAC/230 VAC	110 VAC/230 VAC
Gradeability	25%	25%

The specification is subject to change without notice.



A fully proportional joystick control allows smooth operation.



Cage rotation enables the cage to be accurately positioned.



The hydraulic drive system, provided as standard, allows the DINO 180T to be easily manoeuvred around site.

DINO® and Dino Lift® are trademarks registered by the company Dino Lift Oy