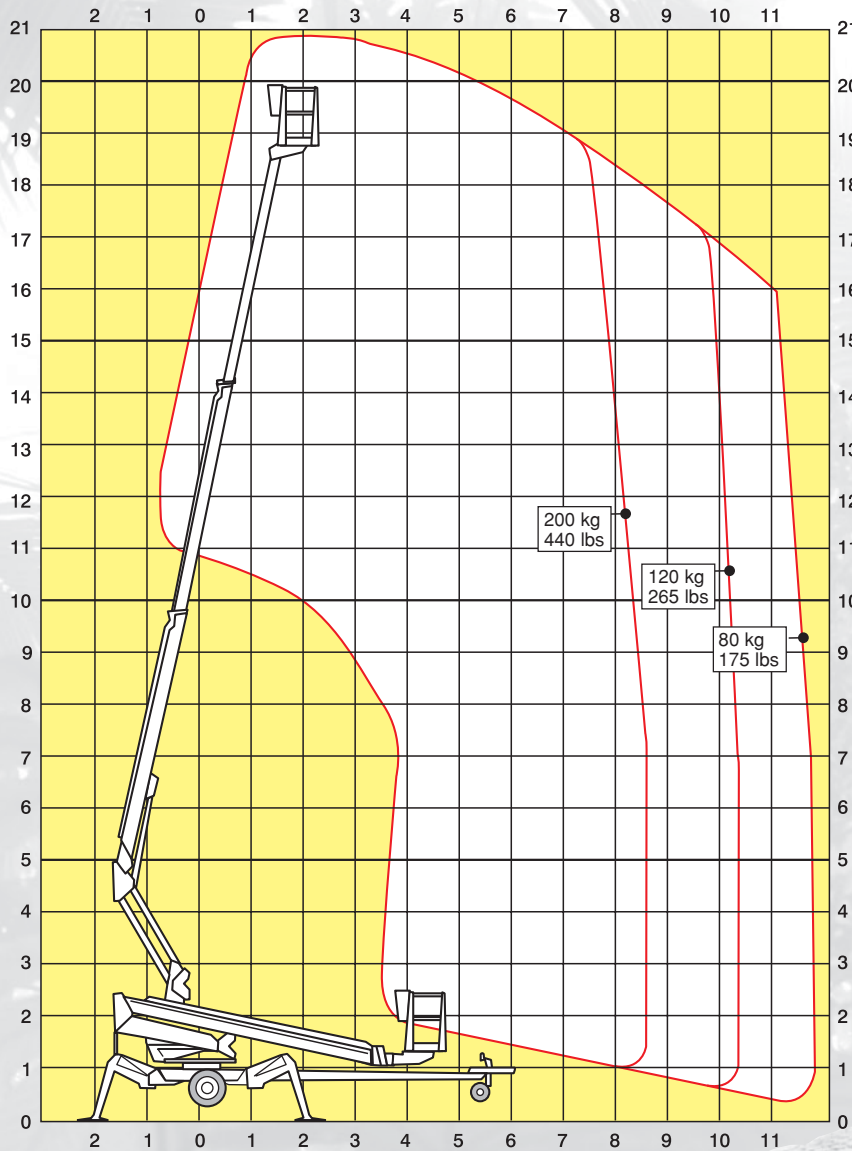


# DINO<sup>®</sup> 210XT

**DINO lifting power  
for the urban jungle**



# Technical specification on DINO® 210XT



<b>Working height</b>	<b>21.0 m</b>	<b>68'10"</b>
<b>Platform height</b>	<b>19.0 m</b>	<b>62'5"</b>
<b>Maximum outreach</b>	<b>11.7 m</b>	<b>38'5"</b>
<b>Support width</b>	<b>4.3 m</b>	<b>14'1"</b>
<b>Lifting capacity</b>	<b>215 kg</b>	<b>475 lbs</b>
<b>Basket size</b>	<b>0.7 x 1.3 m</b>	<b>2'4" x 4'3"</b>
<b>Boom rotation</b>	<b>continuous</b>	<b>continuous</b>
<b>Basket rotation</b>	<b>90°</b>	<b>90°</b>
<b>Boom control</b>	<b>proportional</b>	<b>proportional</b>
<b>Transport length</b>	<b>7.88 m</b>	<b>25'10"</b>
<b>Transport width</b>	<b>1.92 m</b>	<b>6'4"</b>
<b>Transport height</b>	<b>2.18 m</b>	<b>7'2"</b>
<b>Weight</b>	<b>2440 kg</b>	<b>5380 lbs</b>
<b>Driving system</b>	<b>standard</b>	<b>standard</b>
<b>AC-socket in the basket 230 V x 2</b>	<b>standard</b>	<b>standard</b>
<b>Power supply</b>	<b>110/230 VAC</b>	<b>110/230 VAC</b>
<b>Gradeability</b>	<b>25 %</b>	<b>25 %</b>
<b>Petrol aggregate</b>	<b>standard</b>	<b>standard</b>

The specification is subject to change without notice.



The platform may be powered by mains electricity or petrol engine.



The driving system of the DINO 210XT is operated from the control box which is mounted on the side of the tow bar.



The unique stabiliser arrangement allows the DINO 210XT to be used on difficult ground conditions.

DINO® and Dino Lift® are trademarks registered by the company Dino Lift Oy.

