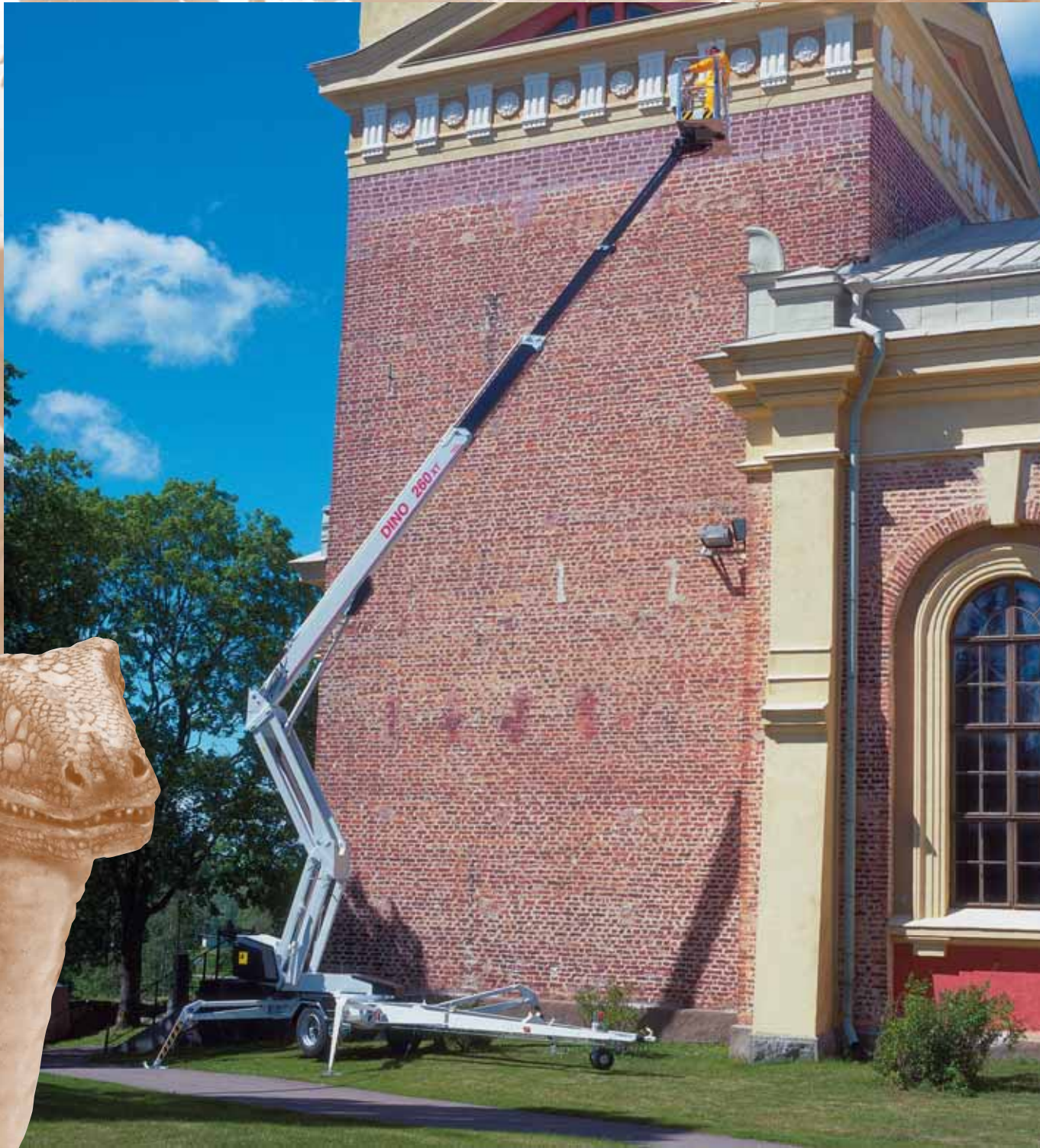
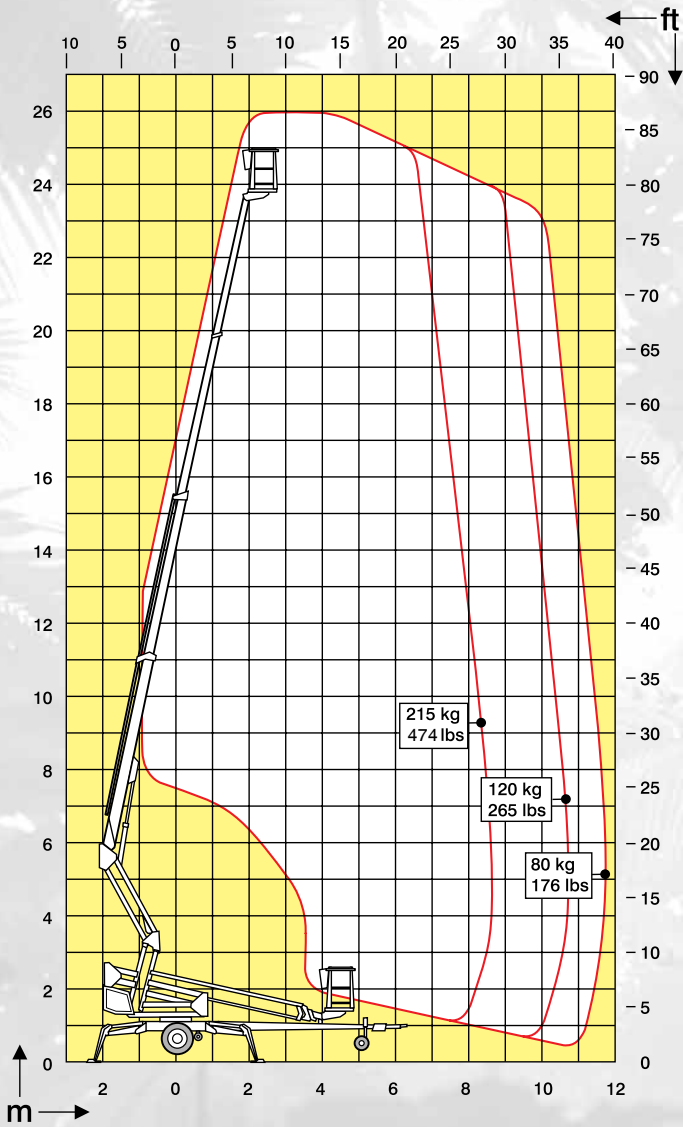


DINO[®] 260XT

Visibly above the others



Technical specification on DINO® 260XT



The basket of the DINO 260XT is spacious. Stepless control of boom movements is possible with two joysticks.



The DINO 260XT has a riser that gives the unit an up-and-over capability.



The drive mechanism enables the DINO 260XT to be moved easily around the job site. The system is switched on hydraulically.

| | | |
|---------------------------------------|---------------------|---------------------|
| Working height | 26,0 m | 85'5" |
| Platform height | 24,0 m | 78'10" |
| Maximum outreach | 11,7 m | 38'5" |
| Support width | 4,4 m | 14'5" |
| Lifting capacity | 215 kg | 475 lbs |
| Basket size | 0,7 x 1,45 m | 2'4" x 4'9" |
| Boom rotation | continuous | continuous |
| Basket rotation | 90° | 90° |
| Boom control | proportional | proportional |
| Transport length | 8,25 m | 27'1" |
| Transport width | 2,04 m | 6'8" |
| Transport height | 2,33 m | 7'8" |
| Weight | 3450 kg | 7600 lbs |
| Driving system | standard | standard |
| AC-socket in the basket | standard | standard |
| Power supply | 230 VAC | 230 VAC |
| Gradeability | 25 % | 25 % |
| Equipped with petrol aggregate | | |
| Diesel aggregate | optional | |

The specification is subject to change without notice.

DINO® and Dino Lift® are trademarks registered by the company Dino Lift Oy.