

Range P

Cod. PRP1420

**Description:** Articulated/Telescopic platform, fully hydraulic with high specifications of strength, reliability and easy maintenance. Specifica designed to fulfill the high standard of quality requested by professional users, ensuring a long working life and a high residua value.

## Performances

Working height mt.		18.00
Max load in the basket kg.	† †   †	200
Max working outreach mt.	† †   †	9.60
Turret rotation °		450
Hose track		Internal
Controls in the basket		Hydraulic multifunctions joystick

## Platform specifications

Steel basket dimensions mt.	1.40x0.70
Fiberglass basket dimensions mt.	1.20x0.70
Basket rotation °	70 + 70
Front outriggers	Inclined
Back outriggers	Inclined
Foot plate gauge min. mt.	2.80



## Assembling

This assembly represents the "multipurpose" version with outriggers slightly outside the vehicle mirrors width. The excellent capacity of levelling allows however high performances and operational possibilities.

## Body

Purposely designed assembly to optimize functionality and utilization

## Standards

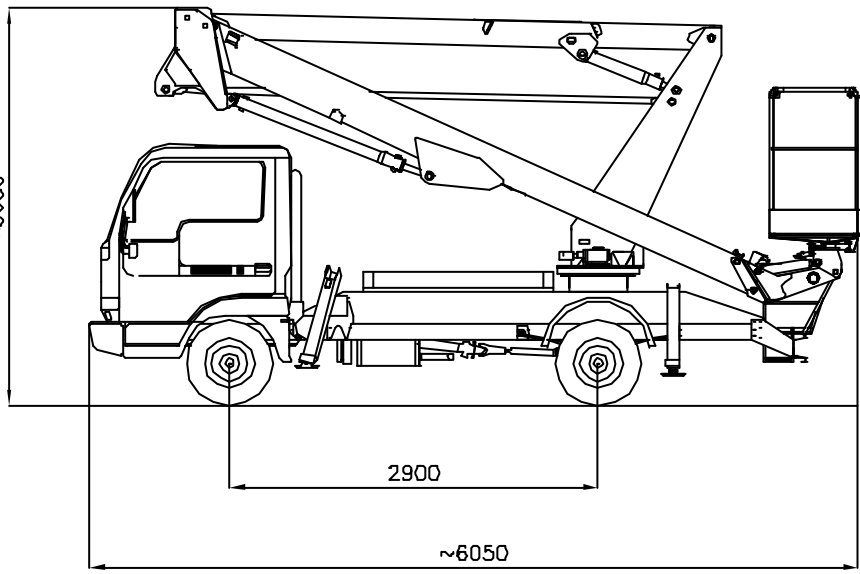
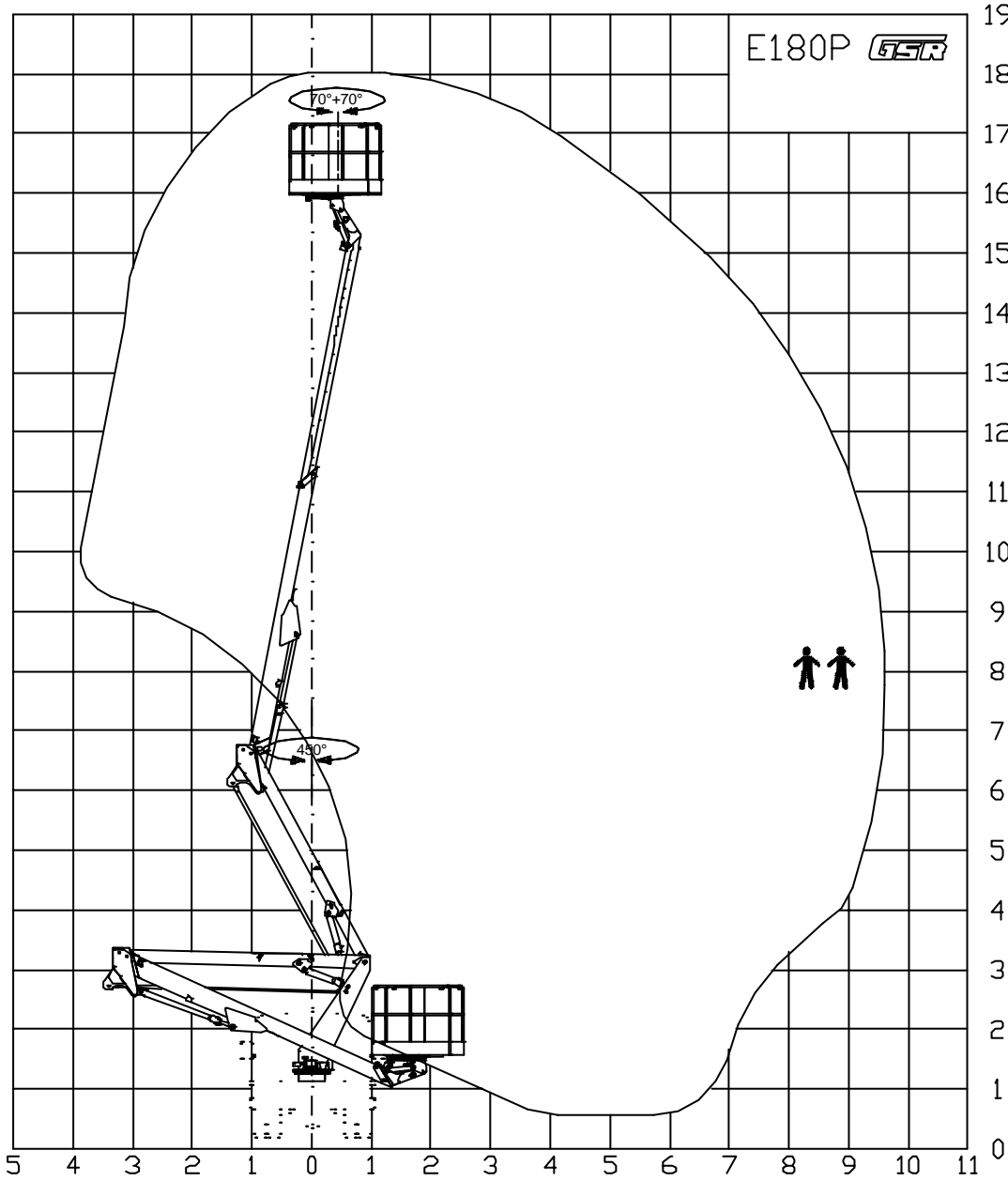
CE certificate

## Accessories

There are available a wide range of accessories, many of them are already included as stand machine. It is recommended to contact our sales network for more information.

## Other types of assembling and different vehicles

We are in position to propose the same machine with different type of assembly and / or on different types of vehicles. Contact our sales organization to obtain information about all the possible solutions that we are able to offer.



APPROXIMATE DATA - TECHNISCHE ANDERUNGEN VORBEHALTEN  
 DONNEES INDICATIVES - DATI INDICATIVI

AGGIORNAMENTI MODIFICHE  
 C F  
 B E  
 A D

MAX SAFE WORKING LOAD	= <b>200 KG</b>
MAX NENNTRAGFAHIGKEIT IM KORBE	
MAX CHARGE NOMINALE DANS LE PANIER	
MAX PORTATA NOMINALE IN NAVICELLA	

	DENOMINAZIONE	DATA
	E180P Basic	02-03-2005
	NISSAN TL35 - 3.5 T	CODICE
		PRP1420