

## H 43 TPX



- Continuous outreach control
- Maximum platform capacity for 3 people (450kg)
- Max 65ft 7in (20 m) horizontal outreach.
- 4 wheel drive and steer.
- Extending and oscillating axles.

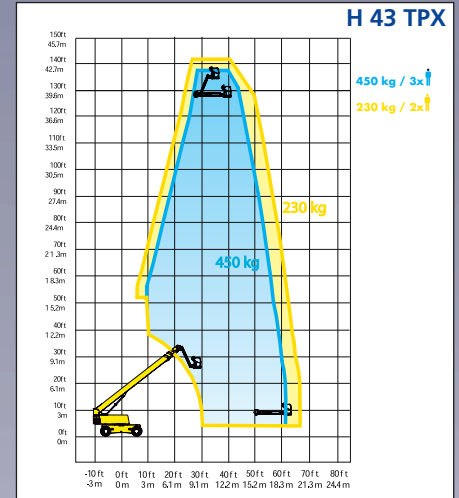
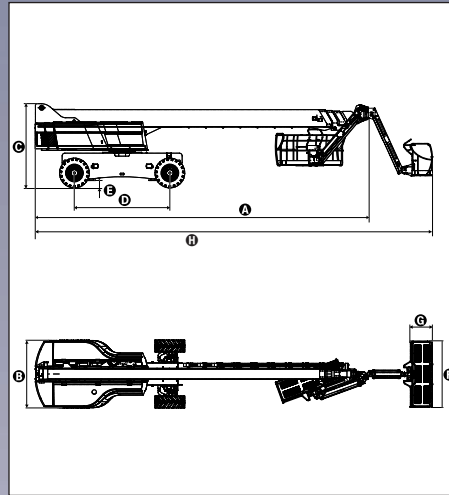


# H 43 TPX

# Telescopic boom

## The Haulotte® advantages

- Sectional load : 450 kg (3 people) or 230 kg (2 people)
- Max 65ft 7in (20 m) horizontal outreach.
- Gradeability up to 40%.
- Hydraulic differential lock and 15 in (38 cm) ground clearance for improved rough terrain.
- Continuous 360° turntable rotation.
- Proportional and simultaneous controls for higher speed and accuracy.
- Robust, reliable and easy to maintain design.



## STANDARD FEATURES

- 3° tilt alarm
- Extending axles
- Oscillating axles
- Sound and light signal for tilt and weighing
- Rotating engine tray for easier maintenance
- 4 wheel drive and steer
- Proportional controls
- Cover opening upwards
- Visual indicator system on the upper control platform: visual fault indicator: tilt, fuel indicator and visual indicator for the pedals, charges selection.
- Towing hawks
- 180° hydraulic platform rotation.

## OPTIONS & ACCESSORIES

- Power line to cage
- Platform : 2ft 11in x 6ft (0,91 m x 1,83 m)
- Alarm kit (includes rotating light and acoustic displacement signal)
- Compressed air hose Ø 13
- Generator 3300W
- Encoded starting device
- Biodegradable hydraulic oil

## SPECIFICATIONS

	H 43 TPX	
Working height	43.00 m	141 ft
Platform height	41.00 m	134 ft 6 in
Maximum outreach	20.00 m	65 ft 7 in
Platform capacity	230 kg ou 450 kg	507 lb or 992 lb
Vertical jib displacement	140° (-70° / +70°)	
Horizontal jib displacement	150° (-75°/+75°)	
Jib length	2.20 m	7 ft 2 in
<b>A</b> Travel/transport length	12.30 m	40 ft 4 in
<b>B</b> Width	2.53 m	8 ft 3 in
<b>C</b> Stowed height	3.05 m	10 ft
<b>D</b> Wheelbase	3.50 m	11 ft 5 in
<b>E</b> Ground clearance	38 cm	15 in
<b>F</b> x <b>G</b> Platform size	2.44 m x 0.8 m	96 in X 32 in
<b>H</b> Stowed Length	14.50 m	49 ft 2 in
Width (with extended axles)	3.33 m	10 ft 11 in
Travel/transport height	3.05 m	10 ft
Tailswing	1.45 m	4 ft 9 in
Drive speed	5 km/h	3.1 mph
Outside turning radius	5.10 m	16 ft 8 in
Turntable rotation	360° continuous	
Hydraulic platform rotation	180° (-90° / +90°)	
Jib rotation for transportation	-160°	
Engine	Perkins Diesel - 64 kW - 87 CV	
Gradeability	40%	
Tyres (foam filled)	445/65-22,5	
Hydraulic tank	240 l	63 gal
Fuel tank	140 l	37 gal
Weight	20 580 kg	44.975 lb



Head Office  
Westside, London Road,  
Hickstead, West Sussex,  
RH17 5LZ

T 01444 88 11 88  
F 01444 88 11 99  
E [hiredesk@facelift.co.uk](mailto:hiredesk@facelift.co.uk)  
W [facelift.co.uk](http://facelift.co.uk)

**facelift**  
access and safety made easy