

HA 12 IP



- 140° (+70°/-70°) fly jib range of motion.
- 22 ft (6.7 m) outreach.
- Stowed height 6 ft 5 in (1.99 m).
- Width 4 ft 4 in (1.34 m).
- Full electric drive.
- 12 hrs operating autonomy.

ISO 9001
GROUP
PINGUELY
HAULOTTE



ARTICULATED BOOMS



VERTICAL MASTS



TELESCOPIC BOOMS



SCISSOR LIFTS



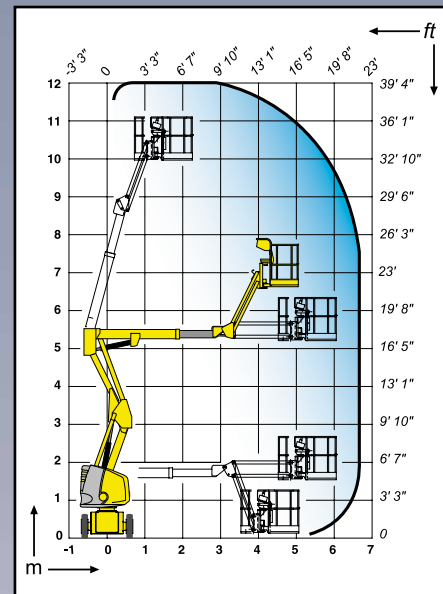
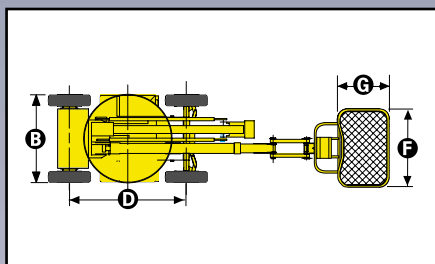
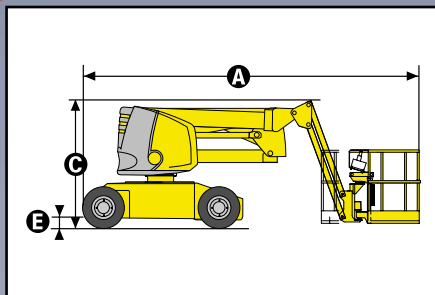
TRAILERS

Haulotte®

ON THE UP

The Haulotte® advantages

- Electric drive
- Turret rotation 360°
- Stowed height 6 ft 5 in (1.99 m) for easy travel through door ways
- Short turning radius 9 ft 3 in (2.85 m) and width 4 ft 4 in (1.34 m) allows operation in the most congested areas
- Full proportional control
- Work platform control
- Work platform overload limiter increases safety
- Robust, reliable and easy to maintain



STANDARD FEATURES

- 375 Ah traction batteries
- Battery charge indicator
- 48 V – 50 A battery charger
- Sensitive control box
- 3° tilt alarm
- Simple operational controls
- Non marking tyres
- Hourmeter
- Turret slewing lock rod
- Towing hooks / lifting eyes
- Manual emergency lowering pump
- 2 front wheel drive and 2 back steering wheels
- Load limiter in cage
- Horn

OPTIONS & ACCESSORIES

- Flashing light
- Working light
- Travel alarm
- Centralized filling up batteries kit
- Power line to cage
- Waterproof batteries
- Air line to cage
- Brakes remote control box from lower control box
- Biodegradable oil



SPECIFICATIONS

Working height	39 ft 4 in	12.0 m
Platform height	32 ft 8 in	10.0 m
Maximum outreach	22 ft	6.7 m
Up and over clearance	17 ft 2 in	5.25 m
Capacity platform	507 lb	230 kg
Fly jib range of motion	140° (+70°/-70°)	140° (+70°/-70°)
A Length	17 ft 8 in	5.43 m
B Width	4 ft 4 in	1.34 m
C Stowed height	6 ft 5 in	1.99 m
D Wheelbase	5 ft 9 in	1.80 m
E Ground clearance	5 in	14 cm
F x G Platform size	4 ft x 2 ft 6 in	1.2 x 0.8 m
Tailswing	0	0
Driving speed	0.55 mph / 2.8 mph	0.9 / 4.5 km/h
Outside turning radius	9 ft 3 in	2.85 m
Turret rotation	360°	
Hydraulic platform rotation	180°	
Energy	48 V (6 x 8 V Batteries 375 Ah)	
Gradeability	25%	
Solid tyres	7" x 12"	
Hydraulic tank	6.6 gallons	30 l
Total weight	12.800 lb	5.800 kg

