



Omme lift

Top safety with
this handy
live-hydraulically
operated lift

Type 13 E
Trailer- or truck-mounted



SAFE ACCESS - made of steel

Technical data: 13 EHX 13 EHBX 13.7 ETX

Trailer-mounted

Trailer-mounted

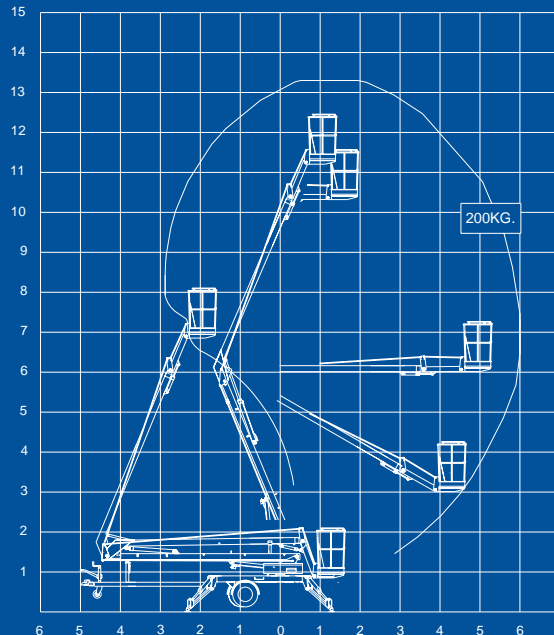
Truck-mounted

Max. working height	13.3 m	13.3 m	13.5 m*
Max. outreach	6.0 m	6.0 m	6.0 m
Max. basket load	200 Kgs.	200 Kgs.	200 Kgs.
Rotation	±355°	±355°	±355°
Basket size	1.1 x 0.6 x 1.1 m	1.1 x 0.6 x 1.1 m	1.1 x 0.6 x 1.1 m
Power supply	230 V / 10 Amp.		
Battery		12 V / 230 Ah	12 V / 230 Ah
Charger		20 Amp	20 Amp
Travelling length	6.60 m	6.60 m	6.30 m*
Travelling height	1.97 m	1.97 m	3.00 m*
Travelling width	1.60 m	1.60 m	2.40 m*
Operational width	3.50 m	3.50 m	2.40 m*
Total weight (excl. truck)	1400 Kgs.	1400 Kgs.	1520 Kgs.
Hydraulic stabilizers	+	+	+
230 V outlet in basket	+	+	+
Third boom hydraulic	+	+	+
Adjustable travelling width 1.6/1.1 m	0	0	0
Propulsion	0	0	

+ Standard

0 Option

* Depending on type of truck



“Handy”



13 EHX / EHBX

is a live hydraulically controlled articulating trailer platform which is powered by either battery or 230 V mains.

The platform has a max. working height of more than 13 m and because of the third boom, which can be operated separately, the platform is very suitable for working up and over obstructions.

The live hydraulic controls ensure a steady and precise proportional movement of the platform functions.

Stability - also during transport. The low weight makes it suitable for towing by smaller vehicles and also for mounting on trucks with a gross vehicle weight of less than 3500 Kgs.

Omme lift type 13 EHX /13 EHBX can be delivered with adjustable travelling width. In a quick way the wheel axles can be pushed together so the travelling width is reduced from 1.6 m to 1.1 m.

Hydraulic propulsion option

Omme lift type 13 EHX and 13 EHBX can be equipped with propulsion powered by the hydraulic system of the platform. It is controlled by 2 easily accessible valves. When equipped with this option the access platform can propel itself around the work site.