



# Omme lift

Top safety with  
this handy  
electro-hydraulically  
operated lift

**Type 1850 E**  
**Trailer-mounted**

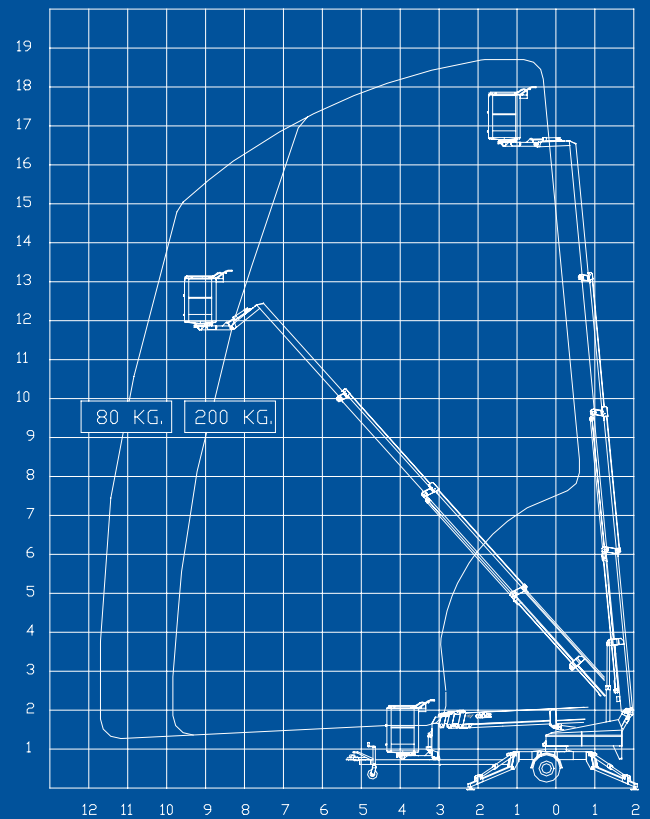


**SAFE ACCESS - made of steel**

## Technical data:

	<b>1850 EZ</b> Trailer-mounted	<b>1850 EBZ</b> Trailer-mounted	<b>1850 EBDZ</b> Trailer-mounted
Max. working height	18.6 m	18.6 m	18.6 m
Max. outreach	11.7 m	11.7 m	11.7 m
Max. basket load	200 Kgs.	200 Kgs.	200 Kgs.
Rotation	2 x 400°	2 x 400°	2 x 400°
Turnable basket	1.25 x 0.8 x 1.1 m (2 x 41° electrical)		
Power supply	230 V / 16 Amp	Battery	Battery / diesel
Battery		4 x 6 V / 240 Ah	4 x 6 V / 240 Ah
Charger		20 Amp	20 Amp
Diesel engine			14 kW / 18,8 HP
Generator			24 V / 22 Amp
Travelling length	7.20 m	7.20 m	7.43 m
Travelling height	2.10 m	2.10 m	2.10 m
Travelling width	1.70 m	1.70 m	1.70 m
Operational width	4.25 m	4.25 m	4.25 m
Total weight	2180 Kgs.	2200 Kgs.	2480 Kgs.
230 V outlet in basket	+	+	+
Hydraulic stabilizers	+	+	+
Proportional controls	+	+	+
Propulsion	0	0	0

+ Standard  
O Options



## A stable lift – also during transport



### 1850 EZ, 1850 EBZ and 1850 EBDZ

are identical apart from their power sources. Standard features include hydraulic stabilizers with interlocks, basket rotation and proportional controls with dual controls to ground and basket. Design features include a basket mounting that forms a “fly” boom mounted to the top boom section and gives increased outreach over obstacles. The specially designed steel booms made from high and broad profiles allow greater outreach whilst maintaining a high degree of stability and rigidity. Being shorter in travel length than most machines of this type, the 1850 E-series allows improved manoeuvrability and is particularly suited when mounted on to a chassis cab.

**1850 EZ** is mains powered 230V/16 Amp and is especially suited, where continuous or extended operation is required.

**1850 EBZ** is powered by a heavy duty 24 V battery pack with built-in charger capable of charging the batteries whilst the platform is in use.

**1850 EBZ** is especially suited for jobs, without mains access.

### Hydraulic propulsion (option)

OMME access platform type 1850 E can be equipped with propulsion powered by the hydraulic system of the access platform and controlled through a delicate hydraulic valve operated from a special drive station platform that provides the operator overall visibility of the machine. When equipped with this option the platform can propel itself around the work site.

**1850 EBDZ** has dual power option battery- and diesel engine especially suited for internal use for all types of jobs and outdoor use. During operation with diesel engine the batteries are recharged by the generator of the engine. The lift can also be delivered with dual power option battery- and petrol engine (EBPZ).