



# Omme lift

**A sky climber  
with top  
safety**

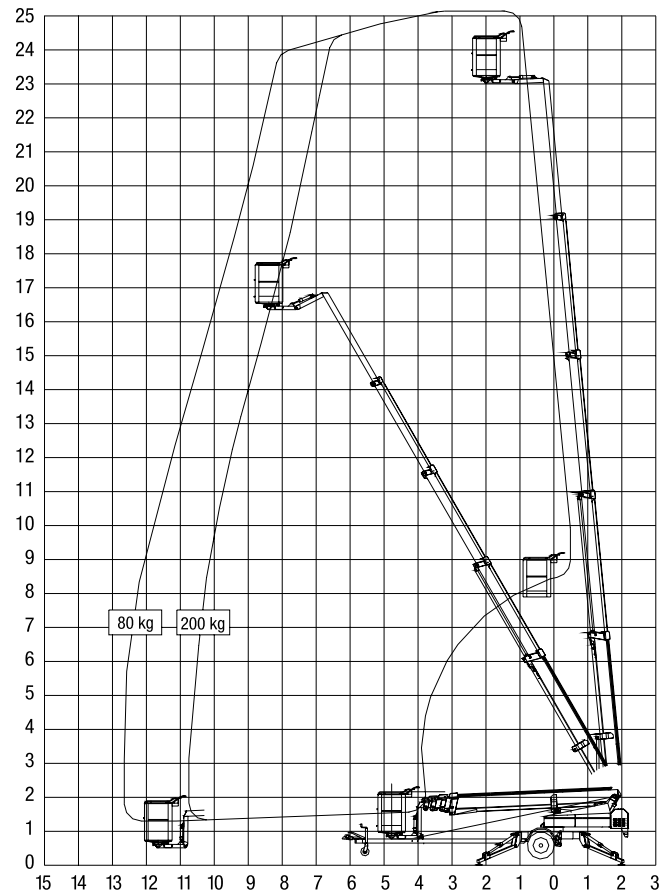
**Type 2500 E  
Trailer-mounted**

CE

**SAFE ACCESS - made of steel**

Technical data:	2500 EZ	2500 EBZ	2500 EBDZ
	Trailer-mounted	Trailer-mounted	Trailer-mounted
Max. working height	25.1 m	25.1 m	25.1 m
Max. outreach	12.6 m	12.6 m	12.6 m
Max. basket load	200 kg	200 kg	200 kg
Rotation	± 400°	± 400°	± 400°
Turnable basket	1.25x0.8x1.1 m (2 x 41° electrical)		
Power supply	230V/16A	Battery	Battery/diesel
Battery		24V/180Ah/5h	24V/180Ah/5h
Charger		30 A	30 A
Diesel engine			14 kW/18.8 hp
Generator			24V/22A
Travelling length	8.40 m	8.40 m	8.40 m
Travelling height	2.10 m	2.10 m	2.10 m
Travelling width	1.70 m	1.70 m	1.70 m
Operational width	4.25 m	4.25 m	4.25 m
Total weight	2900 kg	2900 kg	3180 kg
230 V outlet in basket	+	+	+
Proportional controls	+	+	+
Hydraulic stabilizers	+	+	+
Propulsion	0	0	0

+ Standard  
0 Option



## »Convenient and time saving«



### 2500 EZ, 2500 EBZ and 2500 EBDZ

are identical apart from their power sources. Standard features include hydraulic stabilizers with interlocks, basket rotation and proportional controls with dual controls from ground and basket. Design features include a basket mounting that forms a “fly” boom mounted to the top boom section and gives increased outreach over obstacles. The specially designed steel booms made from high and broad profiles allow greater outreach whilst maintaining a high degree of stability and rigidity. Being shorter in travel length than most machines of this type, the 2500E-series allows improved manoeuvrability and is particularly suited when mounted on to a chassis cab.

**2500 EZ** is mains powered 230 V/16 A and is especially suitable, where continuous or extended operation is required.

**2500 EBZ** is powered by a heavy duty 24 V battery pack with built-in charger capable of charging the batteries whilst the platform is in use.

**2500 EBZ** is especially suited for jobs, without mains access.

### Hydraulic propulsion (option)

OMME access platform type 2500 E can be equipped with propulsion powered by the hydraulic system of the access platform and controlled through a delicate hydraulic valve operated from a special drive station platform that provides the operator overall visibility of the machine. When equipped with this option the platform can propel itself around the work site.

In order to provide even more efficiency a unique drive and stabilizer control is also available. When in transit position a swing-up control panel makes it possible to operate both drive and stabilizers without leaving the basket. Convenient and time saving.

**2500 EBDZ** has dual power option battery- and diesel engine especially suited for internal use for all types of jobs and outdoor use. During operation with diesel engine the batteries are recharged by the generator of the engine. The lift can also be delivered with dual power option battery- and petrol engine (EBPZ).