

2500 E



www.ommelift.dk

TRAILER MOUNTED BOOM PLATFORM

OMMELIFT



Quality since 1906

Head Office

Westside, London Road,
Hickstead, West Sussex,
RH17 5LZ

T 01444 88 11 88

F 01444 88 11 99

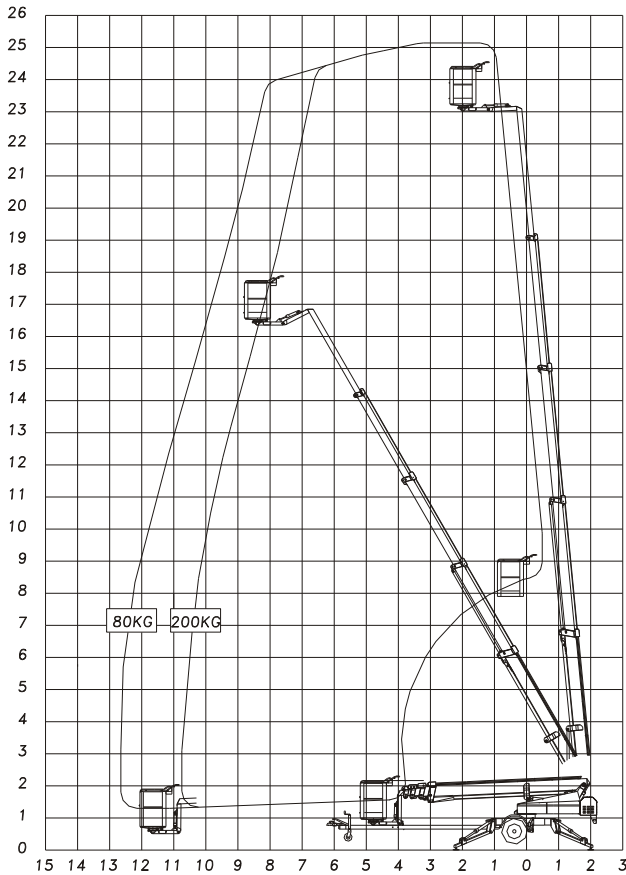
E hiredesk@facelift.co.uk

W facelift.co.uk

facelift
access and safety made easy

2500 E

Mounted on trailer



Technical data:	2500 E	2500 EB	2500 EBD
Max. working height	25.10 m		
Max. outreach	12.60 m		
Max. basket load	200 kg		
Basket size	1.25x0.8x1.1m		
Turnable basket	± 41°		
Rotation	± 400°		
Power supply	230V/16A	Battery	Battery/diesel
Batteries		24V/200Ah/5h	24V/200Ah/5h
Charger		24 V/30 A	24 V/30 A
Diesel engine			14kW/18.8hp
Generator			24 V/22 A
Transport length	8.40 m		
Transport height	2.10 m		
Transport width	1.70 m		
Operational width	4.25 m		
Total weight	3000 kg	3060 kg	3180 kg
Controls	Proportional		
Hydraulic stabilizers	+		
Hydraulic propulsion	+		
230 V outlet in basket	+		

+ Standard

CONVENIENT AND TIME SAVING



Angle boom



Propulsion



Easy control



Transport

- 2500E, 2500EB and 2500EBD are identical apart from their power sources. Standard features include hydraulic stabilizers with interlocks, basket rotation and proportional controls with dual controls to ground and basket. Design features include a basket mounting that forms a "fly" boom mounted to the top boom section and gives increased outreach over obstacles. The specially designed steel booms made from high and broad profiles allow greater outreach whilst maintaining a high degree of stability and rigidity. Being shorter in travel length than most machines of this type, the 2500E-series allows improved manoeuvrability.
- 2500E is main powered 230 V/16 A and is especially suited, where continuous or extended operation is required.
- 2500EB is powered by a heavy duty 24 V battery pack with built-in charger capable of charging the batteries whilst the platform is in use. 2500EB is especially suited for jobs, without mains access.