

## RUTHMANN HIGHquality



**Robust and agile with large lateral outreach – the RUTHMANNSTEIGER® T 540.**

Stability, safety and flexibility – these are your criteria for a hydraulic aerial platform. And these criteria must also be kept fulfilled without any restrictions during work in great working heights. This is important for you as rental company and also as a power supply company, scaffolder, façade builder, cleaning company or mounting company.

The **RUTHMANNSTEIGER® T 540** offers you a maximum of safety in working heights of up to 53,80 metres. Thanks to the lateral outreach to either side of up to 27,80 metres you can cover a really large working range from your work position.

The high degree of flexibility for a great variety of applications is allowed to you thanks to the 6-fold telescopic lifting boom and the large swivelling angle of the articulated top boom Rüssel® (cage lifting arm), which is with this model in standard execution a telescopic one. With this agility you can also reach working places without any difficulties even across obstacles.



# RUTHMANNSTEIGER® T 540

Should you have to work under confined place conditions, you can also use the horizontal-vertical stabilizing jacks on only one side or extend them on both sides within the vehicle profile.

With a high carrying capacity of 350 kg the working cage brings apart from your staff also additional tools fast and safely to the desired working place. The rear mounting of the working cage allows you an effortlessly entry and a fast and easy taking into operation of the machine.

You can carry out all movements of the STEIGER® (including those of the jacks) from the working cage and from below at vehicle smoothly and at the same time fast thanks to the automatic speed control of the sensitive proportional control system. An automatic system for the electronic final position

cushioning supplied as standard execution slows down the lifting and lowering movements of the lifting boom and the rotation movements of the Rüssel® in an agreeable way. The also automatic load moment limitation, which is optically indicated in the working cage, completes the profile of this comfortable and technically perfected machine.

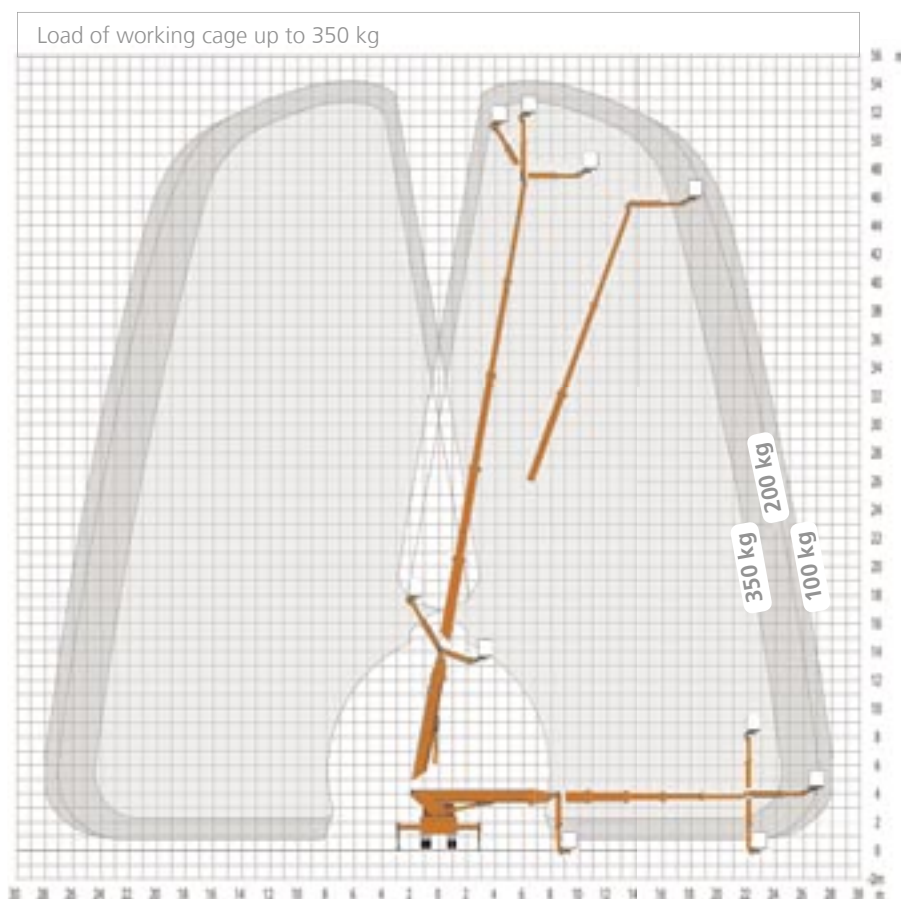
If you want to use this STEIGER®, the standard version of which is mounted on a 3-axle-truck-chassis, mainly in difficult terrain, you can order it on demand with allwheel-drive.

Contact us – by phone, fax or E-mail. We would be pleased to give you detailed information concerning the performance spectrum of our proven STEIGER® and demonstrate profit and advantages arising for you.

## RUTHMANNSTEIGER® T 540

Working height:	53,80 m
Lifting height:	51,80 m
Lateral outreach:	27,80 m*
Range of rotation:	450°
Swivelling angle of articulated top boom Rüssel®:	190°
Size of working cage:	1,70 x 1,00 m
Carrying capacity of working cage:	350/200 kg
Telescopic extension:	34,25 m
Permissible siting inaccuracy:	0°
Total height:	3,95 m
Perm. total weight:	from 26.000 kg

\* Depending on load and execution



All dimensions in meters. All measurements and weights are approximate and refer to the standard basic execution. Technical alterations reserved. Steiger®, Gelenksteiger®, and Rüssel® are registered trademarks of Anton Ruthmann GmbH & Co. KG

