

RUTHMANN HIGHquality

Compact and efficient – the RUTHMANNSTEIGER® TK 170.

For the maintenance of street lighting you need a robust, flexible machine.

The **RUTHMANNSTEIGER®** TK 170 was especially designed for such fast, agile uses, which also often must be done within moving traffic.

But not only as municipal user you do appreciate the versatility of this STEIGER®. Also as electric and transport service company you set great store on the flexibility of your machines. This STEIGER® impresses within road traffic by its compact design. It grants you high-performance and safety in working heights of up to 17,10 metres, with a lateral outreach of up to 10,00 metres.



RUTHMANNSTEIGER® TK 170

The slewing capacity of the articulated top boom „Rüssel®“ gives your staff a further plus of moveability to reach the desired place of work fast.

The high stability is granted to you thanks to the four hydraulic stabilizing jacks having a small jacked width due to their slope-type execution. Therewith you can also carry out jobs without problems in narrow streets or within moving traffic.

With the **RUTHMANNSTEIGER®** TK 170 you can choose between mounting on a chassis or on a delivery van. If you have a high demand for transportation of tools and

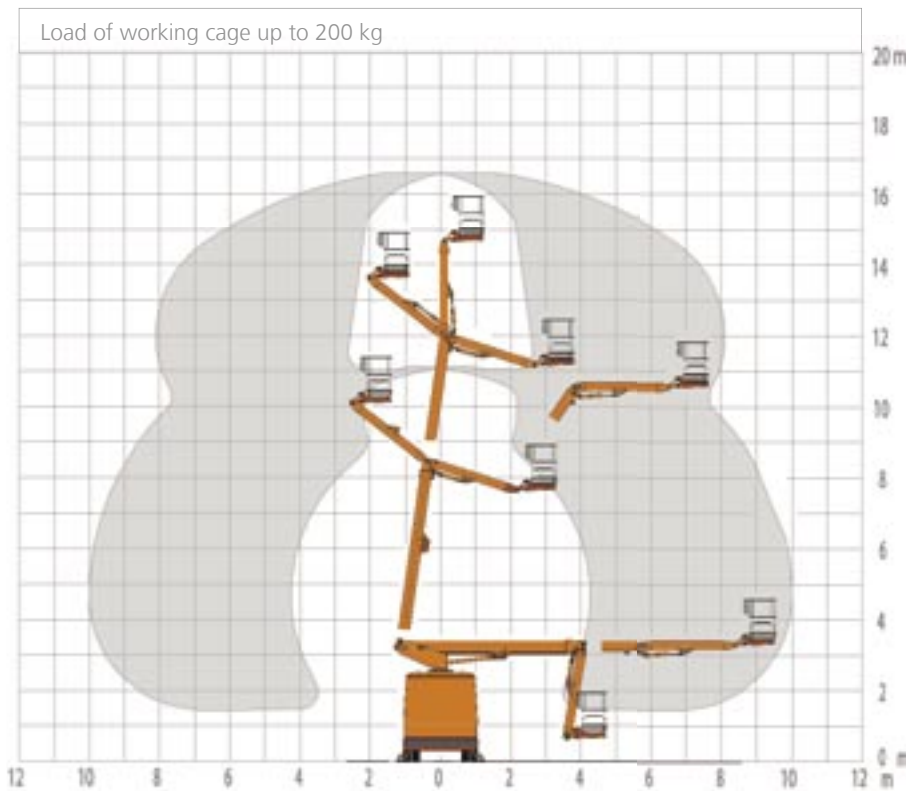
mounting material, the version on delivery van with a lot of additional space is the ideal solution for you.

Contact us – by phone, fax or E-mail. We would be pleased to give you detailed information concerning the performance spectrum of our proven STEIGER® and demonstrate profit and advantages arising for you.

RUTHMANNSTEIGER® TK 170

Working height:	17,10 m*
Lifting height:	15,10 m
Lateral outreach:	10,00 m
Range of rotation:	450°
Swivelling angle of articulated top boom Rüssel®:	160°
Size of working cage:	1,40 x 0,70 m
Carrying capacity of working cage:	200 kg
Telescopic extension:	3,60 m
Permissible siting inaccuracy:	2°
Total height:	3,50 - 3,60 m
Perm. total weight:	from 6.500 kg

* Modified data in case of delivery van



All dimensions in meters. All measurements and weights are approximate and refer to the standard basic execution. Technical alterations reserved. Steiger®, Gelenksteiger®, and Rüssel® are registered trademarks of Anton Ruthmann GmbH & Co. KG