

## Specifications

Working Height:	200 kgs. (2-Men) to 24 metres
Min. Jacked Width (to outside of Jack-feet):	3.4 m.
Max. Jacked Width (to outside of Jack-feet):	5.1 m.
Horizontal Work Reach*:	(approx) 11.5 m.
Gross Vehicle Weight:	2950 kgs.
Max. Weight on any one Outrigger†:	1800 kgs.
Loadings on Front Wheel:	900 kgs.
Loadings on Front Axle:	900 kgs.
Loadings on each Rear Wheel:	1100 kgs.
Loadings on Rear Axle:	2200 kgs.

\* Note Outreach varies according to Jack-spread & Cage Loading.

† When Cage & Boom are fully extended exactly over that Outrigger with maximum safe working load.

## Dimensional data

Cage Size (2-Man):	0.71 m x 1.2 m.
Stowed Width without Cage:	0.80 m.
Stowed Height:	1.98 m.
Stowed Length:	6.20 m.
Wheelbase:	2.30 m.

E & OE. Constant Engineering progress makes it necessary that we reserve the right to vary specifications, equipment and pricing policy without notice.

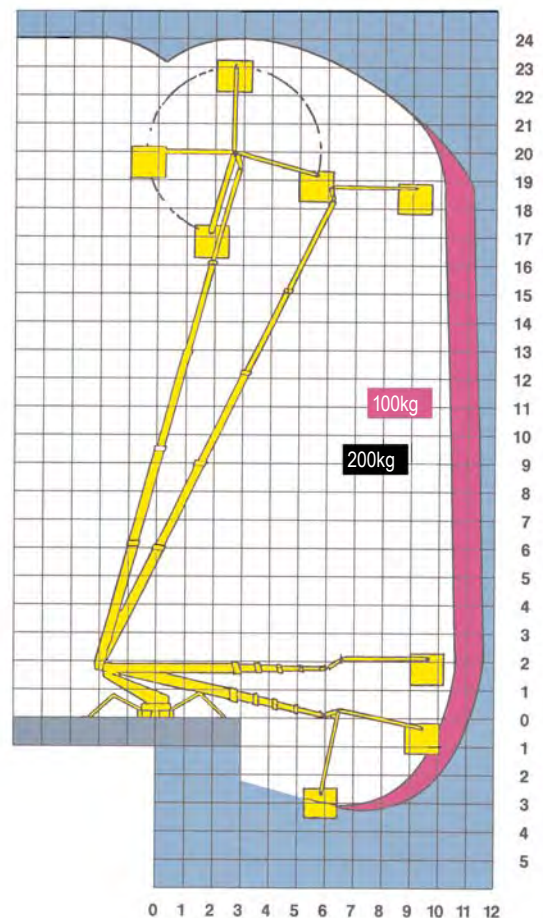
Tyres:	Heavy-duty Pneumatic
Power:	Battery/ Mains 240v.

## Spider TS24 Battery/Mains Power

- 24 m. (78' 0") maximum Working Height
- 11.5 m. (37' 4") maximum Outreach
- 0.80 m. (2' 7") minimum Machine-width
- 11' 2" (3.4 m.) minimum Jacked-width to outside of Jack-feet

- The Spider TS24 is able to pass through a standard doorway of 0.815m (2' 9") wide x 1.98m (6' 6") high
- Numerous Stabiliser-leg configurations allow best use of irregular or restricted floor space.
- Stabiliser-legs can be set up on uneven ground – even on steps.
- Rubber-based Jack-feet Pads offer protection to flooring.
- Self-propelled by pedestrian control: 2-speed/inching.
- Battery/Mains power – (240volt).
- Fully Certificated and recognised Training on the safe operation of these machines is available through Facelift.

Please telephone The Training Manager on :-  
01268 282200 for further information.



**Head Office**  
Westside, London Road,  
Hickstead, West Sussex,  
RH17 5LZ

T 01444 88 11 88  
F 01444 88 11 99  
E [hiredesk@facelift.co.uk](mailto:hiredesk@facelift.co.uk)  
W [facelift.co.uk](http://facelift.co.uk)

**facelift**  
access and safety made easy