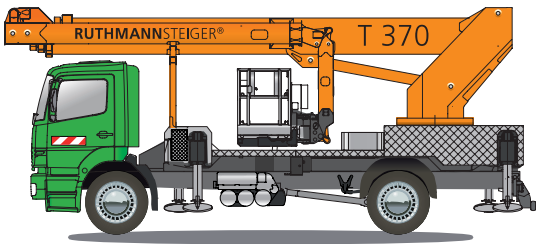


RUTHMANN
professionals at work

STEIGER® T 370



RUTHMANNSTEIGER® T 370 –

Experience a new moveability

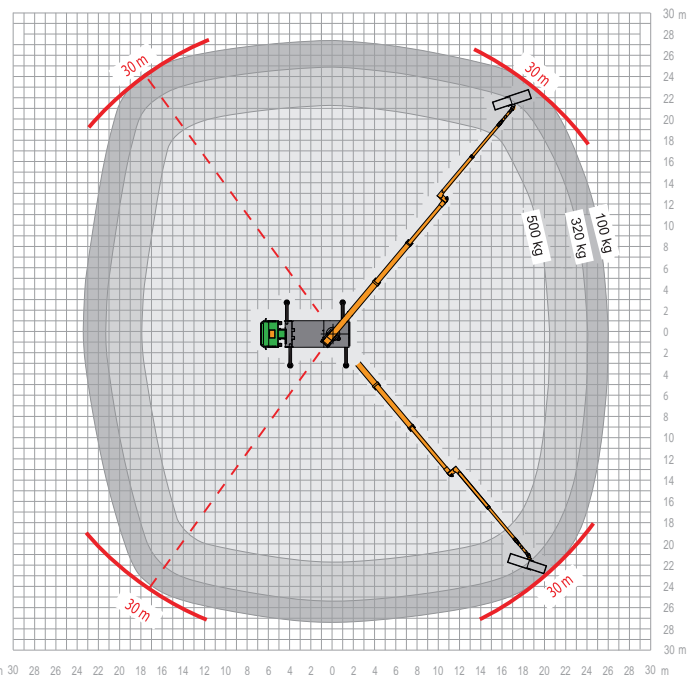
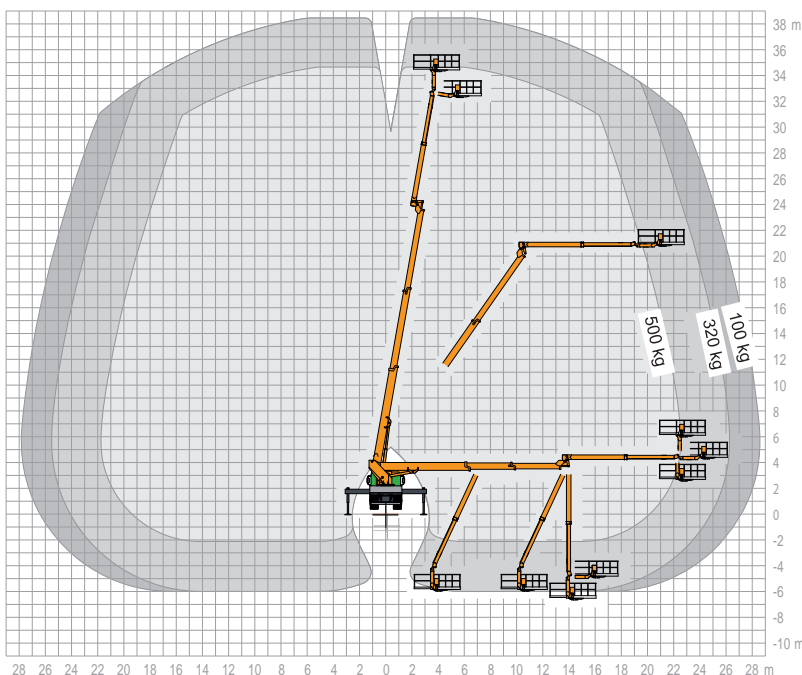
- 37 m working height
- 30 m outreach
- standard double-axle chassis ≥ 18 t (GVW)*
- total vehicle length only 8.80 m
- working behind difficult objects made easy thanks to movable jib (RÜSSEL®)
- 500 kg cage load capacity
- working below ground level is possible
- cage can be entered and loaded at ground level
- automatic set-up and retraction mechanism at the touch of a button
- aluminium working cage, hydraulically extendable, with two access doors
- low-maintenance boom system
- variable jacking widths
- information and diagnostic system with large graphic display located in working cage and at secondary control panel
- and many other innovative functions

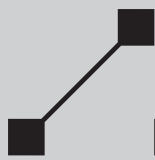
*gross vehicle weight



facelift
access and safety made easy

For further information go to: www.ruthmann.de/t370en





STEIGER® T 370

Truck-mounted access platforms with performance data clearly above 30 metres must nowadays fulfill demanding qualities. Compact dimensions in travelling condition, light and modern carrier-chassis with optimal agility, variable jacking, max. cage load for several persons plus tools, modern control technology etc.

A lot of truck-mounted access platforms in this class deal with this kind of jobs with multiple telescopes and a cage arm, that leads with concerning the outreach to good performance data. They do, however, only allow a restricted moveability of the boom system.

Our **RUTHMANNSTEIGER® T370** was developed especially in accordance with the features demanded by our customers. Its lower and upper telescopic boom construction including moveable cage arm (Rüssel®) additionally leads therewith to a superior maximum of moveability.

With a total length of the T 370 of only 8.8 metres, to be mounted on all common carrier-chassis of the 18-ton-class, fully variable jacking and with

an hydraulically telescopic cage with a width of up to 3.6 metres, it does not leave any demand open. With a working height of 37.0 metres and an outreach of 30.00 metres the T 370 has furthermore most attractive performance data. The cage can – by the way – also be entered and loaded for work from ground.

The operating panel inside the working cage, with large graphic display or the indications of the information and diagnosis values of the different outreach curves – depending on kind of jacking – makes the total package of the **RUTHMANNSTEIGER® T 370** complete.

The cage carrying capacity of 500 kgs enables the T 370 to carry out mounting/maintenance jobs also at larger objects.

Also in this class you can fall back on the wellknown and well-tried standard functions: by means of the automatic positioning system you can bring the machine into working position in no time, the fast finish of your work is granted by the automatic return to

basic position, the fully variable horizontal-vertical jacking ensures at all working sites a safe and flexible jacking, with 4-fold-movements you directly navigate to the desired place.

The enormous stroke of jacks as well as the permissible siting inaccuracy of up to 1 degree makes it possible to place the T 370 also at extreme slopes and under ex-

treme working conditions.

The suitable 18-ton-carrier-chassis, with a wheelbase from 4.5 metres, also allows the use in big cities.

Please contact us – by phone, fax or e-mail. We would be pleased to give you more information on our proven **STEIGER®** and show you your profits and advantages.



RUTHMANNSTEIGER® T 370					
	Working height	37,00 m		Perm. siting inclination	1°
	Lifting height	35,00 m		Perm. total weight	18.000 kg
	Outreach	30,00 m*		Range of rotation	500°
	Size of working cage (hydraulically extendable)	2,30 x 0,90 m 3,60 x 0,90 m		Swivelling angle of the jib/RÜSSEL®	180°
	Carrying capacity of working cage	500 kg		Swivelling angle of upper boom	180°
	Overall height	3,80 m		Wheelbase carrier chassis:	4,50 m
	Total length of vehicle	8,80 m		Telescopic extension	12,10 m
				Telescopic extension upper boom	3,70 m
* depending on load, angle of rotation and outfit					

Valid from: 08/2010 Produktdatenblatt_T_370.indd6