



Mobile elevating work platform WG 120

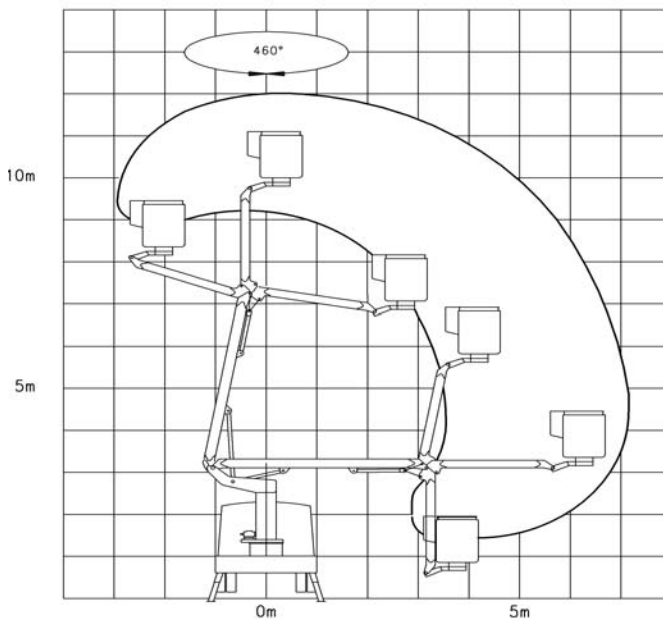
Product information

- Articulated mobile elevating work platform with a main boom and a cage boom
- 4 vertical respectively diagonal stabilisers with moveable spreader plates
- Cage placed at the rear of the vehicle, therefore comfortable access from the ground and direct reach for the object
- Assembled onto 4,6 t chassis



Special features

- Excellent manoeuvrability in traffic through compact and lightweight design
- No sideways overhang of the turntable, therefore no hindrance of the traffic
- High levelling capacity of the stabilising system
- Smooth and jolt free running of the telescopes through optimised slide bearings and deformation resistant hexagon profiles
- Forced guide control of the mechanic cage levelling system
- Finely adjustable and robust hydraulic control by joysticks from the cage
- Bearings are maintenance free
- Optimal protection of all supply- and control lines from external damage; prevents breakdowns and costly repairs



Technical Data	truck	box van
Working height max.	12,00 m	12,00 m
Cage floor height max.	10,00 m	10,00 m
Sideways outreach max.	7,20 m	7,20 m
Cage load max.	200 kg	200 kg
Turntable rotation with end stop damping	460°	460°
cage boom angle	177°	177°
Measurements of the cage (L x W x H) 1,60 m x 0,80 m x 1,10 m		
Travelling length approx.*	7,60 m	7,40 m
Travelling height approx.*	3,25 m	3,50 m
Stabilising width approx.*	2,40 m	1,90 m
G.V.W min.*	4,60 t	5,70 t

* depending on the vehicle

Operation areas

- Rental companies
- Municipal authorities
- Municipal services
- Power supply companies
- Tree cutters
- Forestry workers
- Glass and exterior cleaning
- Craftsmen
- Pest control
- Telecommunication companies
- TV and film work
- Transport companies

- Installation and assembly companies
- Service companies

Standard equipment

- GRP cage
- 2 anchor points for safety harnesses
- Double insulation against 1000 V
- Secondary control at the turntable
- Stable chassis covering of aluminium bulb plate
- Hydraulic pump
- Engine start/stop at the cage
- Electric power line 230 V/10 A
- Buzzer in the driver's cab; call button in the cage
- Mud guards for the rear wheels
- Painting of the unit as required
- Assembly of the platform onto a suitable chassis
- Tested by a notified body, CE-Mark, Declaration of Conformity, Test certificate
- Check against the local vehicle and traffic regulations (StVZO)
- Extensive anticorrosive package

Additional equipment

- Cage rotation device
- Aluminium side walls mounted on the chassis decking
- Tool and material box
- Road marker cones with fixing device
- Spreader plates
- Halogen working light
- Cage boom movement without stabilising
- Timber handrail on the cage
- Holding device for chain saw
- Dividing screen
- E-aggregate 230 V
- Biologic hydraulic oil

(More additional equipment on request)

We reserve our right for alterations in technology, development and equipment without prior notice.