



# Mobile elevating work platform WGT 250

## Product information

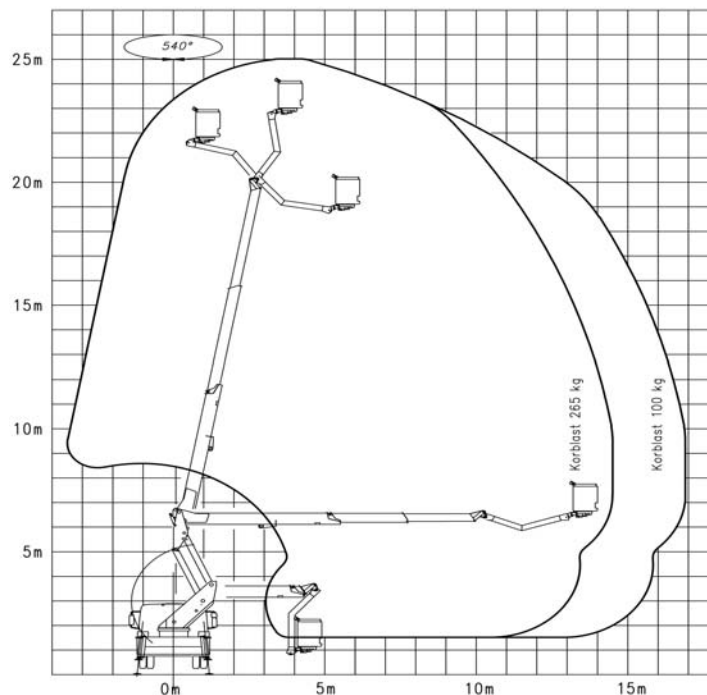
- Telescopic mobile elevating work platform with a 3 section extension boom and a cage boom
- Parallelogram between main boom and turntable
- Vertical Stabilisers at the front and at the rear, to be controlled from the cage
- Assembled onto chassis with 15 t G.V.W.

## Special features

- Additional lifting element in parallelogram execution, possibility to lift the complete telescopic main boom unit in a clearance zone
- Excellent manoeuvrability in traffic through compact and lightweight construction
- High levelling capacity of the stabilising system
- Smooth and jolt free running of the telescopes by optimised slide bearings and deformation resistant hexagon profiles
- Finely adjustable and robust control by electronic joysticks
- Utilisation and examination of the control signals are carried out by a stored program control (SPC). Data transfer via CAN-Bus-System
- Forced guide control of the hydraulic cage-levelling system; examination of the control signals via SPC (master-slaves)
- Bearings are maintenance free
- Optimal protection of all supply- and control lines from external damage; prevents breakdowns and costly repairs

## Operation areas

- Rental companies
- Municipal authorities
- Municipal services
- Power supply companies
- Road construction offices
- Tree cutters
- Aeroplane maintenance companies
- Forestry workers
- Glass and exterior cleaning



## Technical data WGT 250

Working height*	max. 25,00 m	Measurements of the cage (L x W x H)	1,60 m x 0,80 m x 1,10 m
Cage floor height*	max. 23,00 m	Travelling length*	approx. 8,50 m
Sideways outreach**	max. 17,00 m	Travelling height*	max. 3,50 m
Cage load	max. 265 kg	G.V.W.*	15000 kg
Turnable rotation with end-stop damping	540°	Weight of the WUMAG unit	9000 kg
Cage boom angle	170°	* depending on the vehicle	
Swivel range of the cage	2 x 45°	** depending on the vehicle, type of stabilisation and cageload	

- Craftsmen
- Pest control
- Telecommunication companies
- TV and Film work
- Transport companies
- Installation and assembly companies
- Service companies

## Standard Equipment

- GRP cage
- 2 anchor points for safety harnesses in the cage
- Cage overload control acc. EN 280
- Possibility to change the cage
- Emergency control on the chassis, usable as secondary control
- Rotatable cage
- Stable chassis covering of aluminium bulb plate
- Hydraulic pump
- Motor-Start-Stop from all control panels
- Electric power line 230 V / 10 A
- Buzzer in the driver's cab; call button in the cage
- Bracket for the spare wheel
- Mud guards for the wheels
- Painting of the unit as required
- Assembly of the platform onto a chassis
- CE-Mark, Declaration of Conformity, Test certificate
- Check according to local vehicle and traffic regulations (StVZO)

## Additional Equipment

- Bordering of the platform decking
- Roadmarker cones with fixing device
- Spreader plates
- Halogen working light
- Cageboom movement without stabiliser
- Timber handrail on the cage
- Holding device for a chain saw
- Dividing screen
- Mounting on 11,99 t chassis with H-type stabilisers at the front and at the rear

(More additional equipment on request)