



Mobile elevating work platform WT 700

Product information

- Telescopic mobile elevating work platform with a 5-section extension boom and a telescopic cage boom; cage placed behind the driver's cab next to the telescopes
- "Swing-out" stabilisers at the front, telescopic H-type stabilisers at the rear
- Assembled onto 33 t G.V.W. with 4 axles (8 x 6 configuration on request)

Special features

- Sturdy telescopic cage boom, with the cage top-mounted to improve manoeuvrability over obstructions
- High torsion stiffness of the cage console
- Large area of movements for cage rotation of the hydraulically extendible cage
- Smooth and jolt free running of the telescopes by optimised slide bearings and deformation resistant hexagon profiles
- Finely adjustable and robust electronic-hydraulic controls by CAN-BUS technology
- Forced guide control of the electronic-hydraulic cage levelling system; examination of the control signals via SPC
- Electronically controlled "Load moment limiting system" defines the working envelope, depending on current cage load and stabiliser configuration
- Bearings are maintenance free
- Optimal protection of all supply- and control lines from external damage, prevents breakdowns and costly repairs

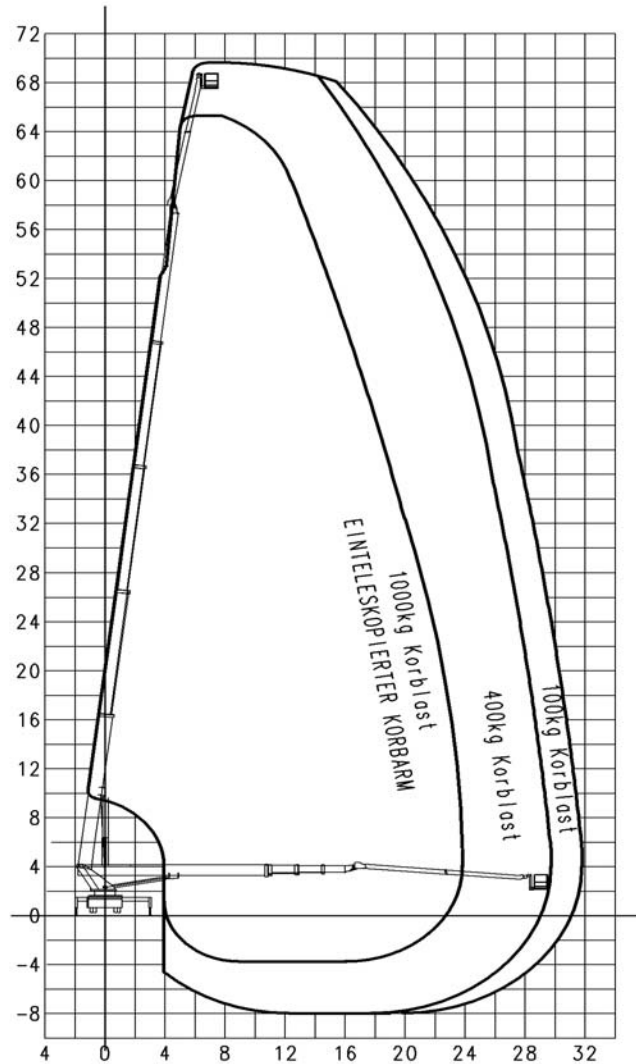
Operation areas

- Rental companies
- Power supply companies
- Antenna construction
- Inspection of wind power stations
- Glass and exterior cleaning
- Telecommunication companies
- Renovation and restoration companies
- TV and film work

Standard equipment

- extendible aluminium cage
- Rotatable cage, 2 x 80°
- Possibility to change the cage

- Anchor points for safety harnesses
- Diagnosis and information system (graphic display)
- Automatic r.p.m. control via joystick
- End-stop damping of all movements
- Emergency lowering system in the cage
- Protective cover for the control panel



Technical Data WT 700

Working height	max. 70,00 m
Cage floor height	max. 68,00 m
Sideways outreach**	max. 32,00 m
Cage load	max. 1000 kg
Turntable rotation with end-stop damping	500°
Cage boom angle	175°
Swivel range of the cage	2 x 80°

Measurements of the cage (L x W x H)	3,88 m x 1,05 m x 1,10 m
Travelling length*	approx. 14,20 m
Travelling height*	approx. 3,96 m
G.V.W*	min. 33 t

* depending on the vehicle
 ** depending on pivoting angle, vehicle, type of stabilisation and cage load

- Illumination of the control panels
- Secondary control at the base; utilisable as emergency control
- Cage contact safeguard
- Stable chassis covering of aluminium bulb plate
- Aluminium side walls mounted on the chassis decking
- 4 Spreader plates with bracket
- Hydraulic pump
- Intercom system
- Electronic anemometer
- Engine start/stop from all control panels
- Electric power line 230V/10A with residual current operated device
- Bracket for the spare wheel
- Mud guards for the wheels
- High quality 2-Component acrylic paintwork
- Assembly of the platform onto a suitable chassis
- Tested by a notified body, CE-Mark, Declaration of Conformity, Test certificate
- Check according to local vehicle and traffic regulations (StVZO)
- 24V Battery pump
- Semi-automatic stabilising system
- Cage overload prevention system according EN 280
- Extensive anticorrosive package
- Seat in the cage
- Tool compartment in the cage
- Memory function

Additional equipment

- Height limitation
- Automatic stabilising system
- Road marker cones with bracket
- Mobile secondary control
- Material box
- Petrol engine driven generator
- WUMAG ELEVANT Service-Tele-Link
- Halogen working lights
- Electric drive 400 V
- Biologic hydraulic oil
- Earthing equipment
- Parallel drive function
- Electric generator
- Fixing for TV-cable
- Bordering of the platform decking

(More additional equipment on request)

We reserve our right for alterations in technology, development and equipment without prior notice.