



# Mobile elevating work platform WTB 220

## Product information

- Telescopic mobile elevating work platform with a 4-section extension boom
- Radial stabilisers at the front, horizontal- vertical stabilisers at the rear, with ground pressure monitoring, to be controlled from the cage
- Cage placed at the rear of the vehicle
- ergonomic access to the cage via access ladder to the chassis decking and swing door in the cage
- Assembled onto 3,50 t chassis



(Picture shows additional equipment)

## Special features

- Excellent manoeuvrability in traffic through compact and lightweight design
- Extremely short travelling length, low travelling height
- Short stabilising width with high levelling capacity
- Smooth and jolt free running of the telescopes through optimised slide bearings and deformation resistant hexagon profiles
- Forced guide control of the hydraulic cage levelling system
- Finely adjustable electronic control by joysticks from the cage
- Fault diagnosis of the important electric parts by help of LED's
- Bearings are maintenance free
- Optimal protection of all supply- and control lines from external damage; prevents breakdowns and costly repairs

## Operation areas

- Rental companies
- Municipal authorities
- Municipal services
- Power supply companies
- Tree cutters
- Forestry workers
- Glass and exterior cleaning
- Craftsmen
- Pest control
- Telecommunication companies
- TV and Film work
- Installation and assembly companies

## Standard equipment

- Aluminium cage, 2 x 80° rotatable
- 2 anchor points for safety harnesses
- "Home function"-self-retracting of the machine with a button in the cage
- Comfortable secondary control (control can be plugged in at the base)
- emergency control at the base
- Stable chassis covering of aluminium bulb plate
- Engine-Start-Stop at the cage
- Electric power line 230 V [110 V] / 10 A from the turntable to the cage with residual current operated device
- Buzzer in the driver's cab; call button in the cage
- Mud guards for the rear wheels
- Painting of the unit as required
- Assembly of the platform onto a suitable chassis
- Check according to local vehicle and traffic regulations (StVZO)
- Extensive anticorrosive package
- semi-automatic stabilisation levelling system including monitoring of the axles

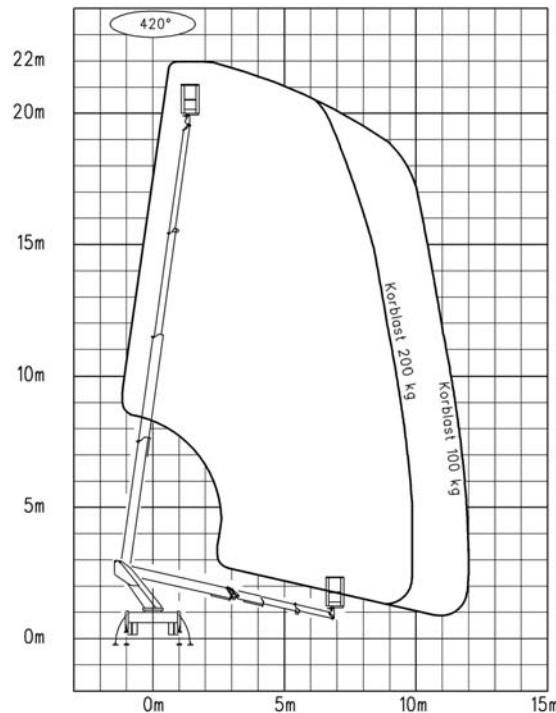
## Additional equipment\*

- Bordering of the platform decking
- Tool and material box
- Roadmarker cones with fixing device
- Spreader plates
- Halogen working light
- Timber handrail on the cage
- Holding device for chain saw
- Dividing screen

(more additional equipment on request)

We reserve our right for alterations in technology, development and equipment without prior notice.

Edition 08/2005



Technical Data WTB 220		Measurements of the cage (L x W x H) 1,40 m x 0,70 m x 1,10 m	
Working height	max. 22,00 m	Travelling length*	approx. 7,20 m
Cage floor height	max. 20,00 m	Travelling height*	approx. 3,00 m
Maximum outreach**	max. 14,00 m	G.V.W*	from 3500 kg
Cage load	max. 200 kg		
Turntable rotation with end stop damping	420°	* depending on the vehicle	
swivel range of the cage	2 x 80°	** depending on the vehicle and cage load	