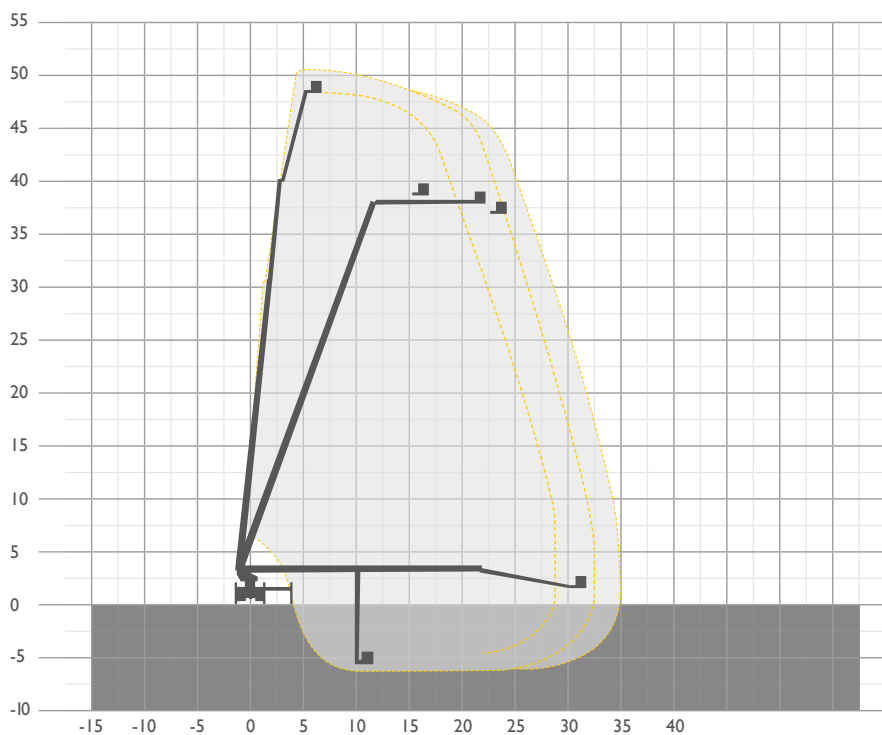




Facelift is the UK's leading independent supplier of powered access equipment, providing equipment hire, sales and training to ensure the safe access to and safe working at height.

TRUCK MOUNTS



BRONTO S52XDT 51.50

TM52 51.50m

REACH HEIGHT	51.50m
PLATFORM HEIGHT	49.50m
CLOSED LENGTH	11.90m
CLOSED HEIGHT	3.70m
CLOSED WIDTH	2.50m
HORIZONTAL REACH	34.40m
WIDTH MAX WORKING	8.00m
WIDTH MIN WORKING	2.50m Variable
SAFE WORKING LOAD	600kg
WEIGHT	26,000kg
CAGE DIMENSIONS	2.04x1.05x1.10m
CAGE ROTATION	+/- 90°
IPAF CATEGORY	1b operated only
SLEW	+/- 280°
FEATURED MODEL	Bronto S52XDT

The information provided is for guidance only. It may change at any time in accordance with manufacturer's specification. Variable Jacking will affect working envelope. Outreach is variable depending on load, angle of rotation and outrigger configuration.

Call 0800 521 595
facelift.co.uk