

S 70 MDT



BRONTO SKYLIFT



TECHNICAL SPECIFICATION

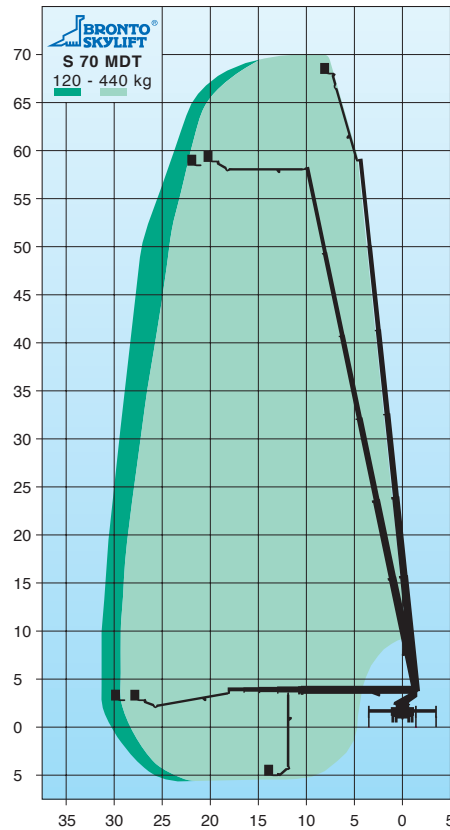
Working height appr.	70.0 m
Height to working cage floor	68.0 m
Max. working outreach	31.0 m
Safe working load	440 kg
Transportation height *	3.85 m
Transportation length *	13.8 m
Transportation width	2.5 m
Working cage	0.9 x 2.2 x 1.1 m
GWV with chassis *	35000 kg

* depending on chassis

STANDARD FEATURES

- Bronto⁺; variable jacking/outreach/cage load system
- Bronto Autojacking
- Identical control stations in the working cage and at the turntable with joystick control levers
- Turntable control station with platform and seat
- Multiple working cage system
- Ramp system and movement speed slow-down for all boom movements
- Back-up system for hydraulics by battery pump and bleed down
- Double safety system
- Automatical interlock system
- Outrigger control panel at the rear of vehicle
- Aluminium decking with steps
- CE and EMC Certification
- Mountable onto various standard chassis

Alterations reserved.



S 70 MDT