

S 88 HLA



BRONTO SKYLIFT



TECHNICAL SPECIFICATION

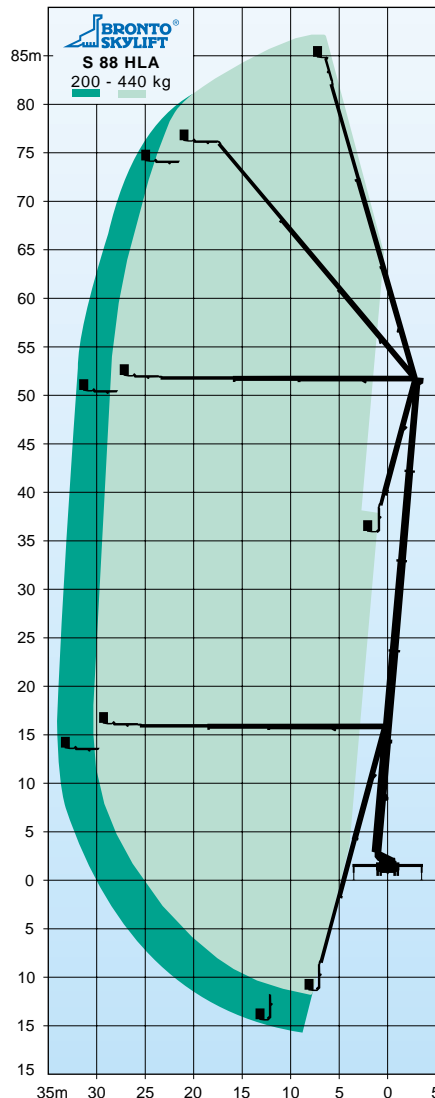
Working height appr.	87.2 m
Height to working cage floor	85.2 m
Max. working outreach	34.0 m
Safe working load	440 kg
Transportation height *	3.95 m
Transportation length *	15.0 m
Transportation width	2.5 m
Working cage	0.9 x 2.2 x 1.1 m
GWV with chassis*	47500 kg

* depending on chassis

STANDARD FEATURES

- Identical control stations in the working cage and at the turntable with joystick control levers
- Back light illumination of the control panels
- Multiple working cage system
- Turntable control station with platform and seat
- Bronto+ ; outreach / cage load
- Ramp system and movement speed slow-down for all boom movements
- Safety switches for extension chains
- Automatical interlock system
- Continuous rotation
- Back-up system for hydraulics by battery pump and bleed down
- Outrigger control panel at the rear of vehicle
- Bronto Autojacking
- Aluminium decking with steps
- CE and EMC Certification
- Mountable onto various standard chassis

Alterations reserved.



S 88 HLA