

# nifty

# DR15

## DECK MOUNTED ACCESS PLATFORM

**15.08m (49ft 6in)**

Working height

**9.00m (29ft 6in)**

Working outreach

**On-board Generator**

Providing power for tools  
& equipment

**Fully Proportional  
Hydraulic Controls**

Simple, reliable &  
easy to maintain

**1.80m Wide Cage**

More room for tools  
& equipment

**Cage Rotation  
& Fly-Boom**

Improved access to  
applications



**niftylift.com**

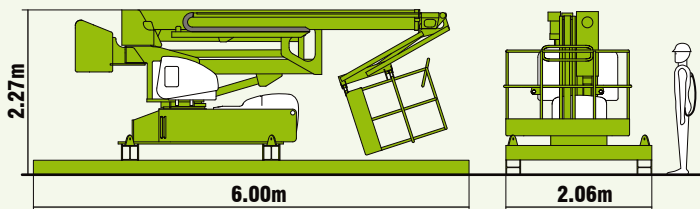
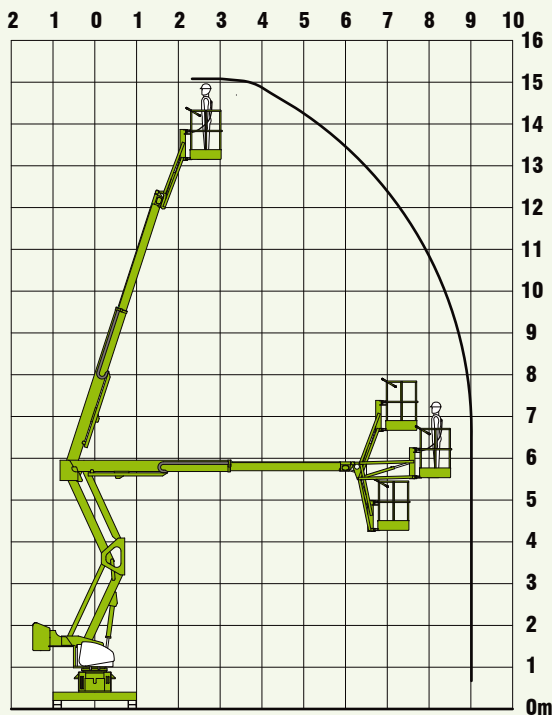
**facelift**  
access and safety made easy

# nifty DR15

The Nifty **Deck Rider 15** is a static base access platform developed specifically to help compliance with 'Working at Height' regulations in the steel erection industry. Its unique low weight design allows it to be used at an earlier stage of build by working off the prepared steelwork prior to laying the concrete slab. Upper floor steel assembly can then continue whilst lower levels are freed for rebar work, casting and light traffic. The reliance on waiting for the slab to achieve sufficient load-bearing strength is removed, making steel erection swifter and more efficient.

## SAFETY FEATURES

- Manual Recovery with Hand Pump
- Dual Controls (Cage & Base)
- Dual Harness Points
- CE Mark
- Cage Overload System
- Lock Valves on all Hydraulic Cylinders



Lifting points allow the **DR15** to be craned into position quickly and easily and the base frame 'sled' has a variable width facility to cater for differing pitches of profiled steelwork. A 1.80m wide cage provides more room for materials and tools and a 150° fly-boom with 100° cage rotation, helps to increase accuracy when positioning.

## SPECIFICATIONS

<b>Working Height</b>	15.08m	49ft 6in
<b>Platform Height</b>	13.08m	43ft
<b>Working Outreach</b>	9.00m	29ft 6in
<b>Slew</b>	360°	
<b>Fly-Boom Arc</b>	150°	
<b>Width</b>	2.06m	6ft 9in
<b>Height</b>	2.27m	7ft 5in
<b>Length</b>	6.00m	19ft 8in
<b>Minimum Weight</b>	4,760kg*	10,470lbs*
<b>Cage Rotation</b>	100°	
<b>Cage Capacity</b>	225kg	500lbs
<b>Cage Size</b>	1.80m x 0.70m	5ft 11in x 2ft 4in
<b>Power System</b>	Kubota 722 18Hp On-board Generator Available	

\* Weights may vary according to specification, please confirm before ordering.

Due to a policy of continuing development and improvement, Niftylift reserves the right to change any specification without notice. Please confirm exact specification before ordering.

**Head Office**  
Westside, London Road,  
Hickstead, West Sussex,  
RH17 5LZ

T 01444 88 11 88  
F 01444 88 11 99  
E [hiredesk@facelift.co.uk](mailto:hiredesk@facelift.co.uk)  
W [facelift.co.uk](http://facelift.co.uk)

**facelift**  
access and safety made easy