

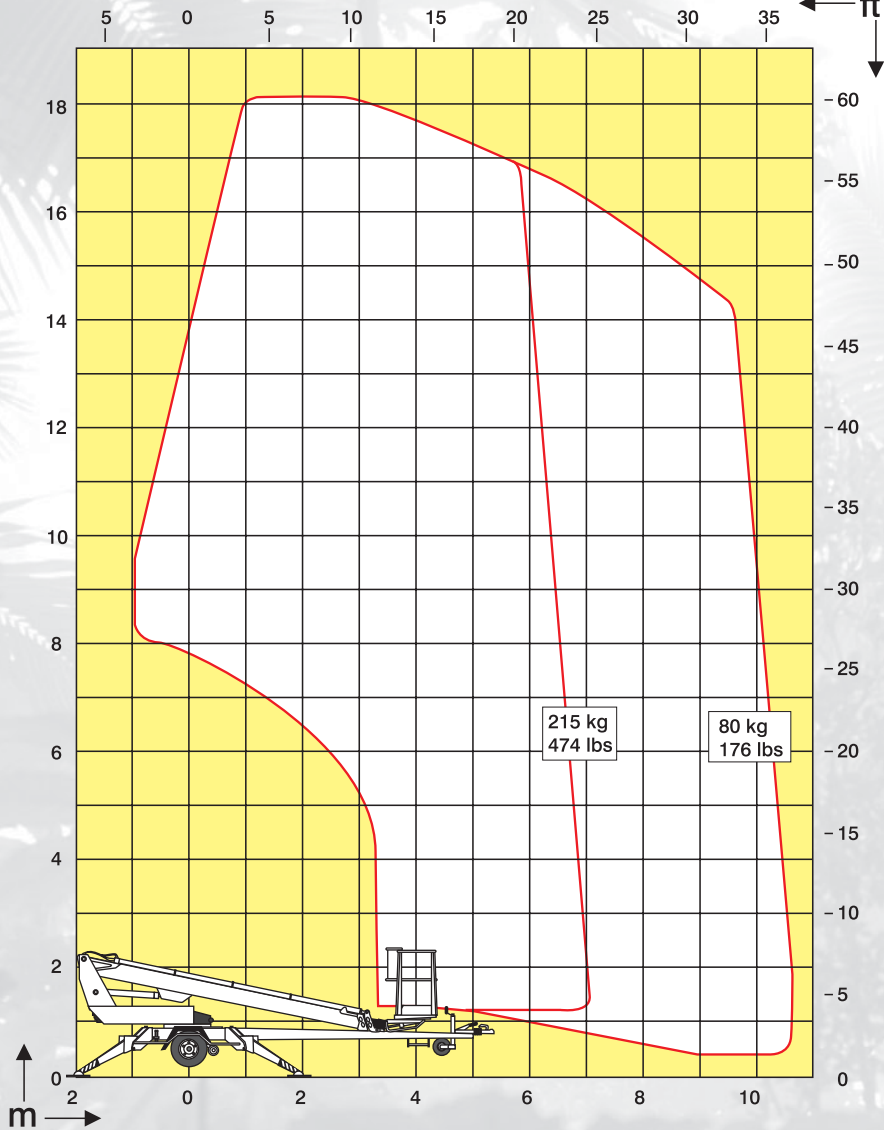
# DINO<sup>®</sup> 180T

**A stable and reliable work platform**





# Technical specification on DINO® 180T



<b>Max. working height</b>	<b>18.0 m</b>	<b>59'</b>
<b>Max. platform height</b>	<b>16.0 m</b>	<b>52'5"</b>
<b>Maximum outreach</b>	<b>10.7 m</b>	<b>35'</b>
<b>Support width</b>	<b>3.8 m</b>	<b>12'6"</b>
<b>Lifting capacity</b>	<b>215 kg</b>	<b>475 lbs</b>
<b>Basket size</b>	<b>0.7 x 1.3 m</b>	<b>2'4" x 4'3"</b>
<b>Boom rotation</b>	<b>continuous</b>	<b>continuous</b>
<b>Basket rotation</b>	<b>90°</b>	<b>90°</b>
<b>Boom control</b>	<b>proportional</b>	<b>proportional</b>
<b>Transport length</b>	<b>7.35 m</b>	<b>24'1"</b>
<b>Transport width</b>	<b>1.78 m</b>	<b>5'10"</b>
<b>Transport height</b>	<b>2.05 m</b>	<b>6'9"</b>
<b>Weight (with driving system)</b>	<b>1780 kg</b>	<b>3920 lbs</b>
<b>Driving system</b>	<b>standard</b>	<b>standard</b>
<b>AC-socket in the basket</b>	<b>standard</b>	<b>standard</b>
<b>Power supply</b>	<b>110 VAC/230 VAC</b>	<b>110 VAC/230 VAC</b>
<b>Gradeability</b>	<b>25%</b>	<b>25%</b>



A fully proportional joystick control allows smooth operation.



Cage rotation enables the cage to be accurately positioned.



The hydraulic drive system, provided as standard, allows the DINO 180T to be easily manoeuvred around site.

**DINO® and Dino Lift® are trademarks registered by the company Dino Lift Oy**

The specification is subject to change without notice.

