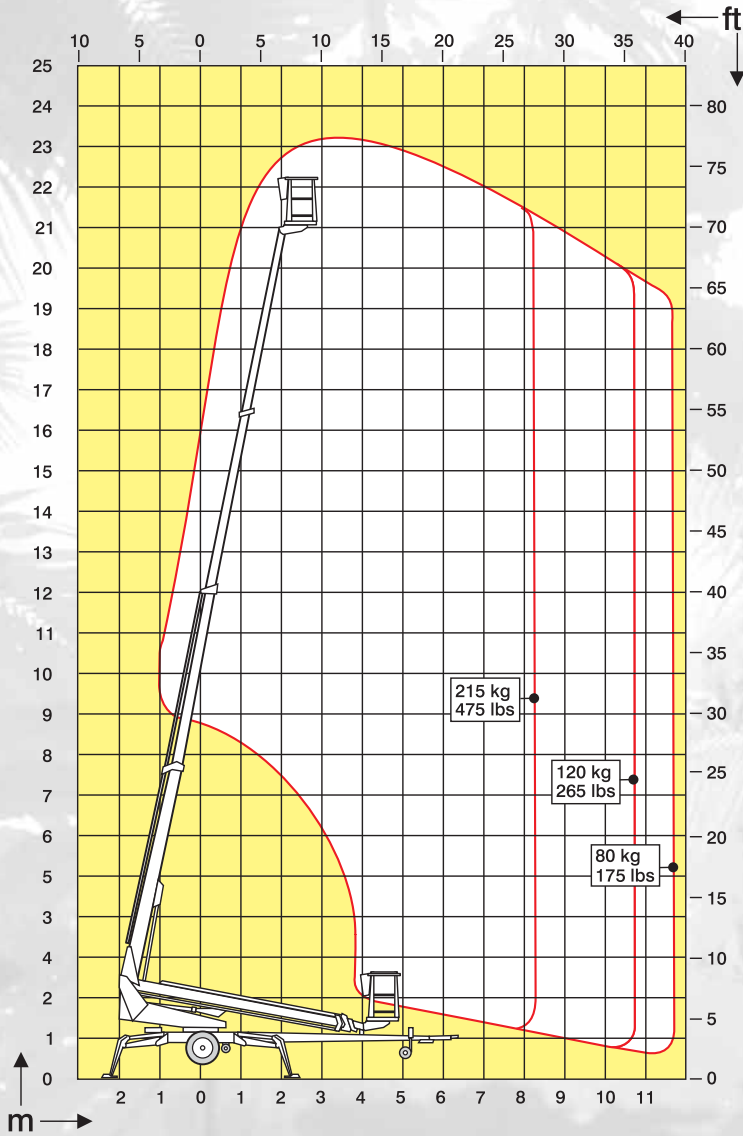


DINO[®] 230T

Going straight to the top



Technical specification on DINO® 230T



Max. working height	23.0 m	75'5"
Max. platform height	21.0 m	68'10"
Max. outreach	11.7 m	38'5"
Support width	4.4 m	14'5"
Lifting capacity	215 kg	475 lbs
Basket size	0.7 x 1.45 m	2'4" x 4'9"
Boom rotation	continuous	continuous
Basket rotation	90°	90°
Boom control	proportional	proportional
Transport length	8.29 m	27'2"
Transport width	2.04 m	6'8"
Transport height	2.20 m	7'3"
Weight	2930 kg	6450 lbs
Driving system	standard	standard
AC-socket in the basket x 2	standard	standard
Power supply	230 VAC	230 VAC
Gradeability	25 %	25 %
Petrol generator	5.8 kW	5.8 kW

The specification is subject to change without notice.



The basket of the DINO 230T is spacious. The boom movements may be controlled steplessly with one joystick.



The driving system of the DINO 230T may be operated either with the push buttons on the chassis or with the cable control available as an option.



The petrol generator, provided as standard, produces power for both the platform and tools.

DINO® and Dino Lift® are trademarks registered by the company Dino Lift Oy.