

DINO[®] 240RXT

Rough Terrain Access



TECHNICAL SPECIFICATION ON **DINO® 240RXT**

PERFORMANCE

Working height	24.0 m	78'10"
Platform height	22.0 m	72'
Maximum outreach (80 kg/175 lbs)	12.1 m	39'10"
Lifting capacity	215 kg	475 lbs
Boom rotation	continuous	
Basket rotation	90°	
Support length	4.4 m	14'4"
Support width	4.0 m	13'2"
Allowed ground inclination	10°	
Inner turning radius	2.15 m	7'
Outer turning radius	5.3 m	17'5"

DIMENSIONS

Basket size	0.7 x 1.3 m	2'4" x 4'3"
	0.9 x 1.55 m	2'11" x 4'3"
Transport length	6.65 m	21'10"
Transport width	1.99 m	6'6"
Transport height	2.29 m	7'6"
Weight	4250 kg	9370 lbs

CHASSIS

Gradeability	35%	
Drive speed (high/low)	4.7/1.5 km/h	2.9/0.9 mph
Four wheel drive	standard	
Steering	2-WS / 4-WS / crab steering	
Tyres	pneumatic, 280/60-15.5	

POWER SOURCE

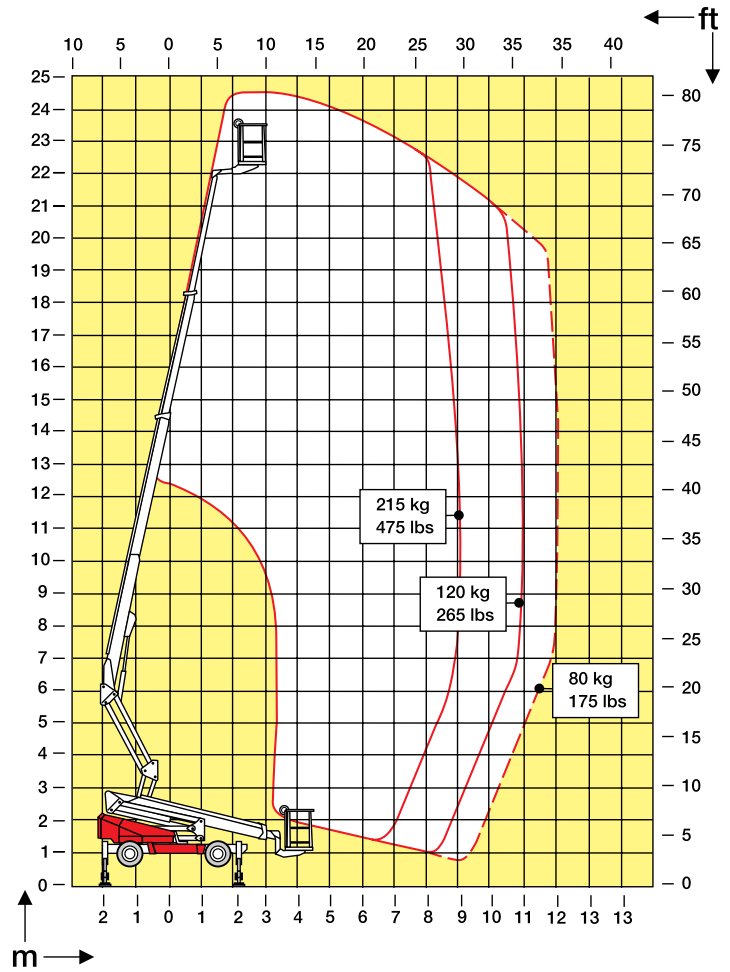
Diesel engine	Caterpillar 3003, 17.5 kW (23.5 hp)/3600 rpm
---------------	---

OTHER STANDARD FEATURES

Boom control	proportional
Level control	electrical, with LED-display

OPTIONS

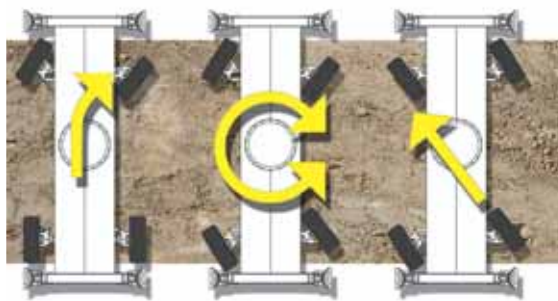
Tyres	pneumatic, 12-16.5
Power source	electric motor (230 V) for boom motions
Outrigger control	automatic levelling system



The specification is subject to change without notice.



All driving and boom functions are operated from the well-designed panel.



Four-wheel-drive and three different steering alternatives.



Maintenance of the modern and reliable hydraulic & control systems is easy.

DINO® and Dino Lift® are trademarks registered by the company Dino Lift Oy