

Range P

Cod. PRP1420

Description: Articulated/Telescopic platform, fully hydraulic with high specifications of strength, reliability and easy maintenance. Specifica designed to fulfill the high standard of quality requested by professional users, ensuring a long working life and a high residual value.

Performances

Working height mt.		18.00
Max load in the basket kg.	† † †	200
Max working outreach mt.	† † †	9.60
Turret rotation °		450
Hose track		Internal
Controls in the basket		Hydraulic multifunctions joystick

Platform specifications

Steel basket dimensions mt.	1.40x0.70
Fiberglass basket dimensions mt.	1.20x0.70
Basket rotation °	70 + 70
Front outriggers	Inclined
Back outriggers	Inclined
Foot plate gauge min. mt.	2.80



Assembling

This assembly represents the "multipurpose" version with outriggers slightly outside the vehicle mirrors width. The excellent capacity of levelling allows however high performances and operational possibilities.

Body

Purposely designed assembly to optimize functionality and utilization

Standards

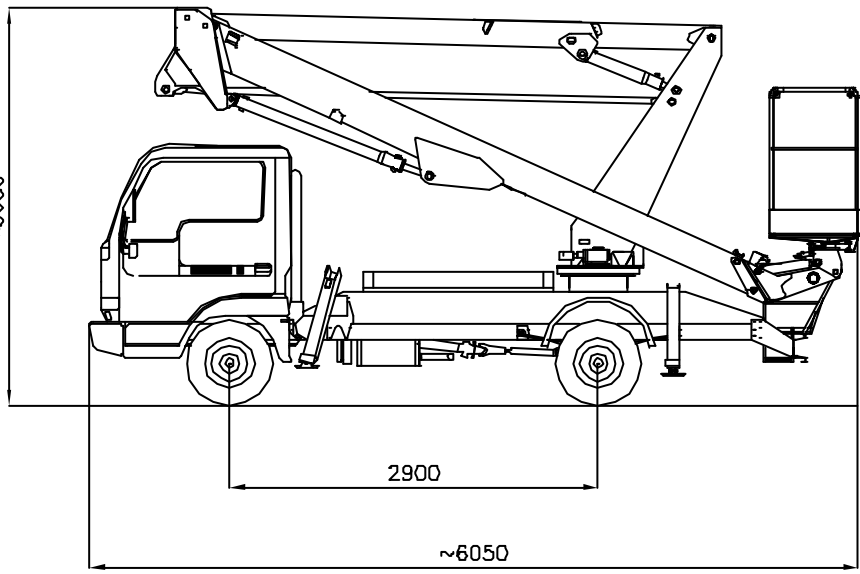
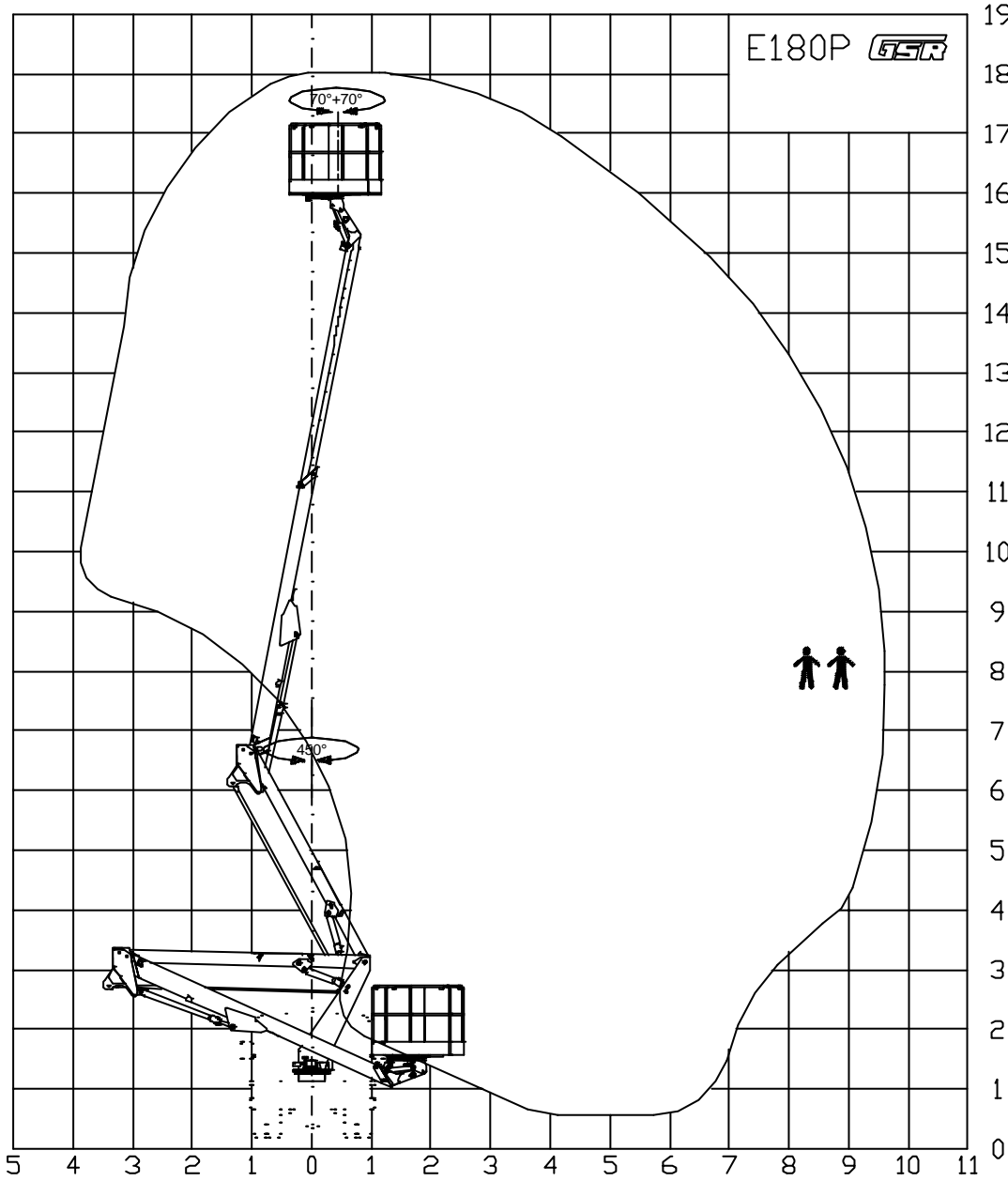
CE certificate

Accessories

There are available a wide range of accessories, many of them are already included as stand machine. It is recommended to contact our sales network for more information.

Other types of assembling and different vehicles

We are in position to propose the same machine with different type of assembly and / or on different types of vehicles. Contact our sales organization to obtain information about all the possible solutions that we are able to offer.



APPROXIMATE DATA - TECHNISCHE ANDERUNGEN VORBEHALTEN
 DONNEES INDICATIVES - DATI INDICATIVI

AGGIORNAMENTI MODIFICHE
 C F
 B E
 A D

MAX SAFE WORKING LOAD
 MAX NENNTRAGFAHIGKEIT IM KORB
 MAX CHARGE NOMINALE DANS LE PANIER
 MAX PORTATA NOMINALE IN NAVICELLA

=
 200 KG



DENOMINAZIONE
 E180P Basic
 NISSAN TL35 - 3.5 T

DATA 02-03-2005
 CODICE PRP1420