

Range TJ

Cod. PRP1251A

Description:

Telescopic platform with Jib, fully hydraulic with high specifications of strength, reliability and easy maintenance. Specifically designed to fulfill the high standard of quality requested by professional users, ensuring a long working life and a high residual value.

Performances

Working height mt.		22.30
Max load in the basket kg.	† † † †	280 80
Max working outreach mt.	† † † †	14.55 17.90
Turret rotation °		375
Hose track		External
Controls in the basket		Hydraulic multifunctions ioystick

Platform specifications

Steel basket dimensions mt.	1.80x0.80
Fiberglass basket dimensions mt.	1.40x0.70
Basket rotation °	60 + 85
Front outriggers	Extendible
Back outriggers	Extendible
Foot plate gauge min. mt.	4.10



Assembling

This assembly represents the top version with a very comfortable stabilization even on delicate flooring. The outriggers are placed slightly outside the mirror width and ensure the best ratio between foot-print on ground and working outreach.

Deck

Anti-slip aluminium deck

Body

Purposely designed assembly to optimize functionality and utilization

Standards

CE certificate

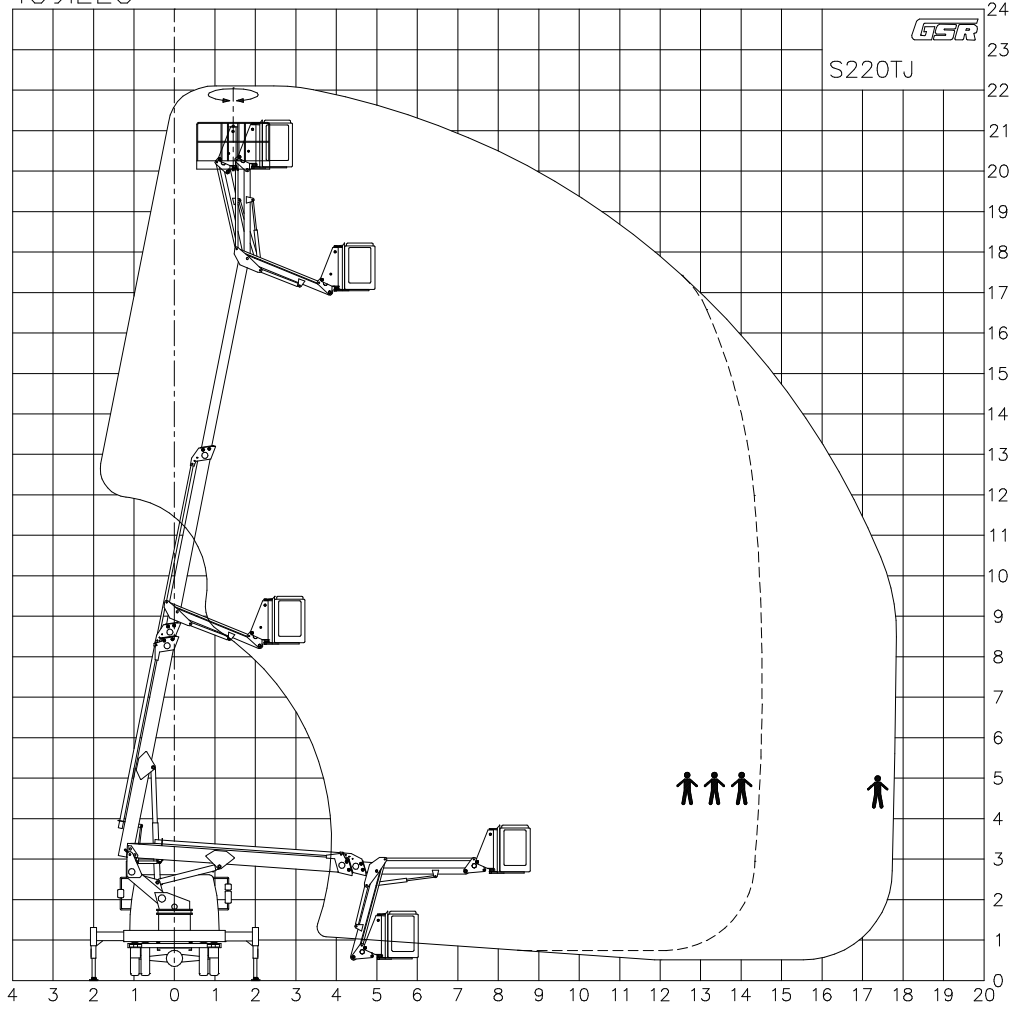
Accessories

It is available a very wide range of accessories, many of them already included in the standard machine. It is recommended to contact our sales network for more information.

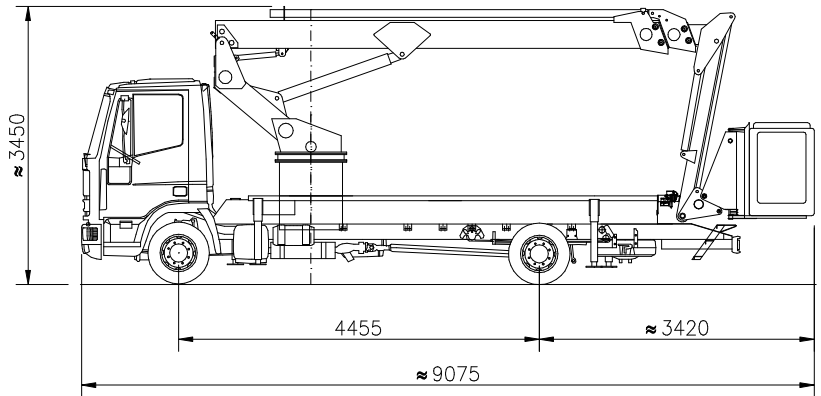
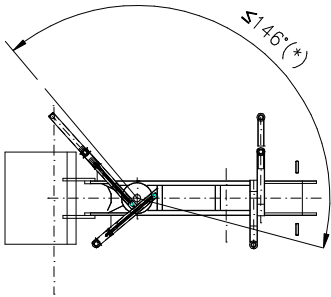
Other types of assembling and different vehicles

We are in position to propose the same machine with different type of assembly and / or on different types of vehicles. Contact our sales organization to obtain information about all the possible solutions that we are able to offer.

439.228



(*) WITH NARROW JACKING
(LEFT OR RIGHT SIDE)



MAX SAFE WORKING LOAD
MAX NENNTRAGFAHIKGKEIT IM KORB
MAX CHARGE NOMINALE DANS LE PANIER
MAX PORTATA NOMINALE IN NAVICELLA

👤👤👤=
280 KG



DENOMINAZIONE
S220TJ Comfort
IVECO 75 E 17- 7.5 T

DATA 15/10/2001
CODICE PRP1251

AGGIORNAMENTI MODIFICHE A2 Aggiornate prestazioni in data 21/11/2001 Fiospergher
 APPROXIMATE DATA - TECHNISCHE ANDERUNGEN VORBEHALTEN
 DONNEES INDICATIVES - DATI INDICATIVI

C	H
B	G
X	F