

# H21TX

Telescopic  
boom

- 55 ft 9 in (17 m) outreach.
- 793 lb (360 kg) platform capacity.
- Foam filled tyres.
- 14 in (34 cm) ground clearance.



ISO 9001  
GROUP  
PINGUELY  
HAULOTTE



ARTICULATED BOOMS



VERTICAL MASTS



TELESCOPIC BOOMS



SCISSOR LIFTS



TRAILERS

**Haulotte®**

ON THE UP

# H21TX

## The Haulotte® advantages

- Standard foam filled tyres.
- 4 wheel drive.
- Length : 9.11 / 29 ft 11 in
- Hydraulic differential lock for demanding rough terrain conditions.
- Work platform overload limiter increases safety.
- Large & robust slewing ring
- Simultaneous proportional controls for all movements.
- Side mounted engine for easy access & maintenance.
- Improved productivity through fast boom movement speeds.
- Robust, reliable, easy to maintain design.

### STANDARD FEATURES

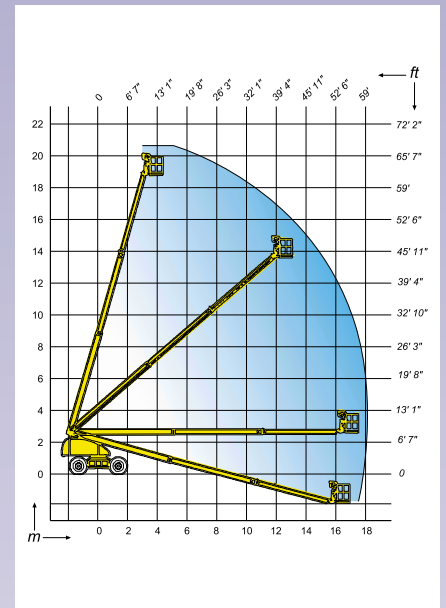
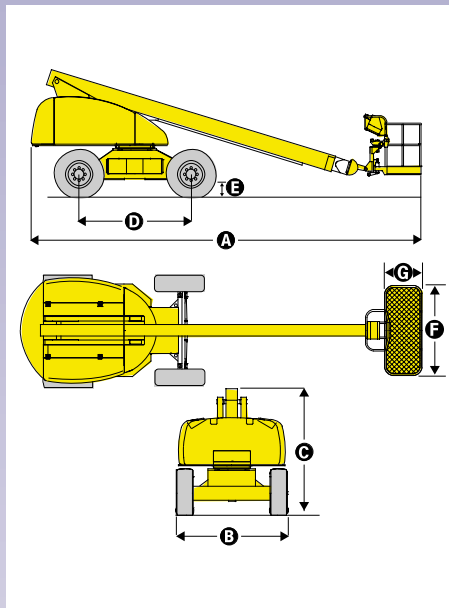
- 62 ft (18.86 m) platform height
- 5° tilt alarm
- 180° hydraulic platform basket rotation
- Silent pack Hatz diesel engine
- Free wheeling device
- Electric emergency lowering system
- Safe use in winds up to 37 mph (60 km/h)
- Simple uncomplicated operational controls
- Turret slewing lock rod
- Hourmeter
- Towing hooks / lifting eyes
- 2 hooks for safety harness in platform

### OPTIONS & ACCESSORIES

- Large platform (2.3 m x 0.8 m / 7 ft 6 in x 2 ft 7 in)
- Rotating beacon
- Catalytic exhaust
- Working light
- Travel alarm
- Power line to cage
- Oil cooler
- Airline to cage
- Hostile environment kit
- Sandblast protection kit
- Encoded starting device



## TELESCOPIC BOOM



### SPECIFICATIONS

Working Height	68 ft	20.86 m
Platform Height	62 ft	18.86 m
Horizontal Reach	55 ft 9 in	17 m
Platform Capacity	793 lb	360 kg
<b>A</b> Length	29 ft 3 in	8.91 m
<b>B</b> Width	8 ft 1 in	2.47 m
<b>C</b> Stowed Height	9 ft 3 in	2.84 m
<b>D</b> Wheelbase	8 ft 2 in	2.49 m
<b>E</b> Ground clearance	13 1/2"	34 cm
<b>F</b> x <b>G</b> Platform size	71 in x 32 in	1.8 m x 0.8 m
Tailswing	42 in	1.06 m
Drive speed	0.9 - 3.1 mph	1.5 - 5.0 km/h
Outside turning radius	20 ft 2 in	6.15 m
Turntable Rotation - Continuous	360°	360°
Platform Rotation	180°	180°
Power source	Diesel 53 hp - 38 kw	
Controls	12 V proportional	
Gradeability	40%	
Tyres (Foam Filled)	15 R 22.5 XF	
Hydraulic tank	40 gallons	150 l
Fuel tank	40 gallons	150 l
Weight	28.820 lb	13.100 kg

AS1418.10

