



Omme lift

**Top safety with
this handy
electro-hydraulically
operated lift**

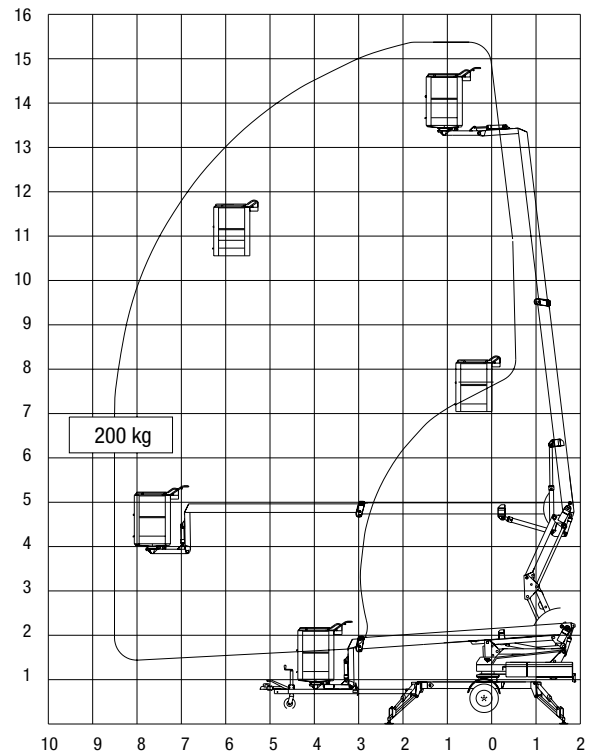
**Type 1550 E
Trailer-mounted**

CE

SAFE ACCESS - made of steel

Technical data:	1550 EZX	1550 EBZX
	Trailer-mounted	Trailer-mounted
Max. working height	15.3 m	15.3 m
Max. outreach	8.5 m	8.5 m
Max. basket load	200 kg	200 kg
Rotation	± 355°	± 355°
Basket size	1.25x0.8x1.1 m	1.25x0.8x1.1 m
Turnable basket	± 41°	± 41°
Power supply	230V/16A	24V/180Ah/5h
Charger		30 A
Travelling length	7.10 m	7.10 m
Travelling height	1.95 m	1.95 m
Travelling width	1.60 m	1.60 m
Operational width	4.10 m	4.10 m
Total weight, incl. propulsion	1940 kg	2100 kg
Hydraulic stabilizers	+	+
2-step controls	+	+
Hydraulic propulsion	+	+
230 V outlet in basket	+	+

+ Standard



»Large ground clearance«



1550 EZX and 1550 EBZX

1550 EZX is powered by 230 V mains and is especially suitable where continuous or extended operation is required.

1550 EBZX is powered by a heavy duty (24V/180Ah/5h) battery pack. Operation is possible independently of 230 V mains connection.

Transportation is safe when towed by small vehicles and 4 x 4 pick-ups.

Standard features include hydraulic propulsion, hydraulic stabilizers and turnable basket.

When equipped with hydraulic propulsion the platform can propel itself around the work site. Right hand side operation.

The turnable basket makes it possible for 2 persons to operate parallel with e.g. facades.

Equipped with an unfolding scissor system giving the lift an increased up and over outreach over high obstacles.

When operating the scissor system up and down the basket will follow a vertical line. Furthermore the lift has no tail swing at rotation.

The telescopic cylinder and all electric wiring are protected inside the telescopic boom.

Fitted with straightforward controls in basket as well as at ground level.

Operational levers for the hydraulic stabilizers are placed centrally on the chassis.

The high and low speed controls ensure steady and smooth movements.