



# Omme lift

Top safety with this  
handy electro-  
hydraulically operated  
lift

Type 1830 E  
Trailer-mounted

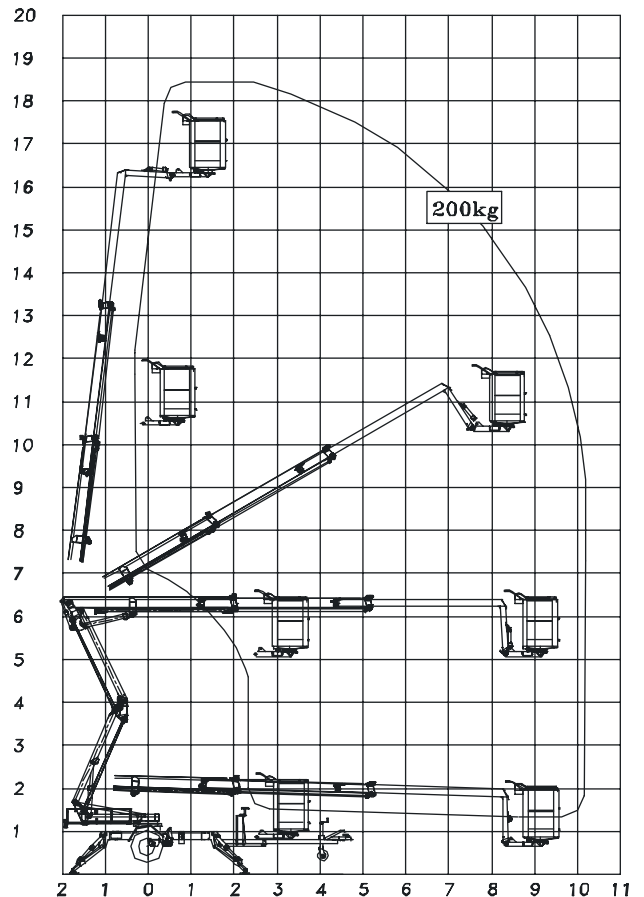
CE

**SAFE ACCESS - made of steel**



Technical data:	1830 EZX Trailer-mounted	1830 EBZX Trailer-mounted
Max. working height	18.3 m	18.3 m
Max. outreach	10.2 m	10.2 m
Max. basket load	200 kg	200 kg
Rotation	± 400 °	± 400 °
Basket size	1.25x0.8x1.1 m	1.25x0.8x1.1 m
Turnable basket	± 41 °	± 41 °
Power supply	230v/16 A	Battery
Battery		24v/180Ah/5h
Charger		30 A
Travelling length	6.70 m	6.70 m
Travelling height	1.99 m	1.99 m
Travelling width	1.60 m	1.60 m
Operational width	4.21 m	4.21 m
Total weight	2450 kg	2550 kg
Hydraulic stabilizers	+	+
Proportional controls	+	+
Hydraulic propulsion	+	+
230 v outlet in basket	+	+

+ Standard



## Compact - large ground clearance



## 1830 EZX and 1830 EBZX

1830 EZX is powered by an electric motor, connected to 230 v mains and is especially suitable where continuous operation is required.

1830 EBZX is powered by a heavy duty battery pack, in total 24v/180 Ah/5h. Operation is possible independently of 230 v mains connection.

The low centre of gravity provides a secure transport after the pulling vehicle.

The 1830 E platforms are mounted with hydraulic propulsion, turnable basket and hydraulic stabilizers.

When equipped with hydraulic propulsion the platform can propel itself around the work site. Operation from a special platform, giving a complete overview.

The turnable basket makes it possible for 2 persons to operate parallel with e.g. a facade.

The 1830 E platforms are equipped with an unfolding scissor system, giving the lift an increased up and over outreach over high obstacles.

When operating the scissor system up and down the basket will follow a vertical line. Furthermore the lift has no tail swing at rotation.

Electric wiring to the basket is protected inside the telescopic booms. The telescopic cylinder is protected under the booms.

The 1830 E platforms are fitted with a straightforward control, in basket and at ground level.

The hydraulic operational levers for the stabilizers are placed centrally on the chassis.

The proportional controls ensure steady and smooth movements.

The basket load of 200 kg applies in the complete outreach of the lift.