



# Omme lift

A sky climber  
with top  
safety

**Type 2900 E**  
**Trailer-mounted**



**SAFE ACCESS - made of steel**

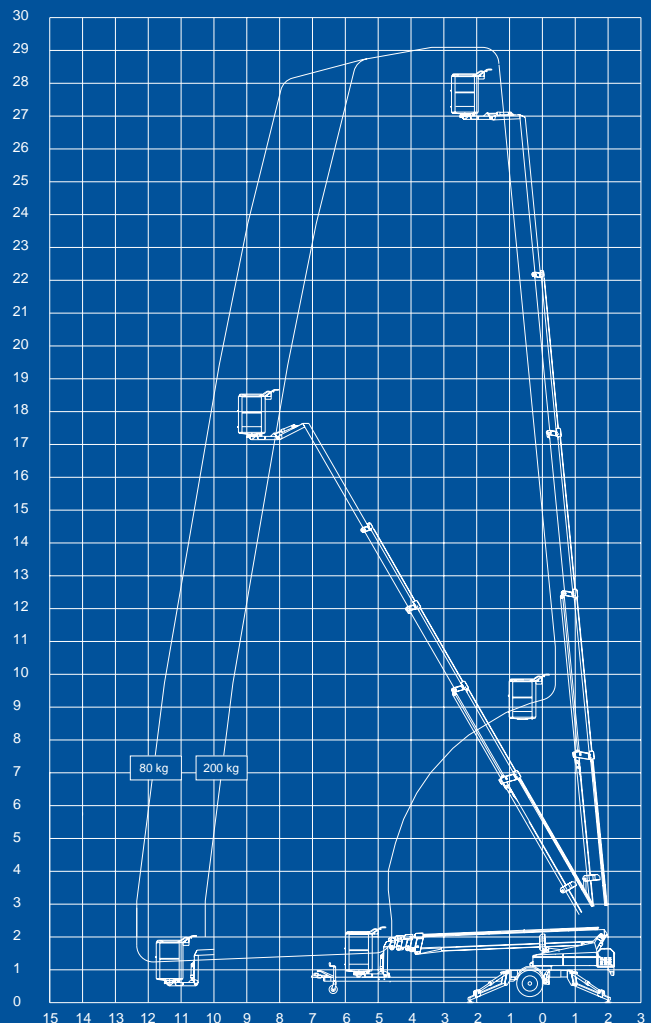
## Technical data:

	<b>2900 EZ</b> Trailer-mounted	<b>2900 EBZ</b> Trailer-mounted	<b>2900 EBDZ</b> Trailer-mounted
<b>Max. working height</b>	29.0 m	29.0 m	29.0 m
<b>Max. outreach</b>	12.3 m	12.3 m	12.3 m
<b>Max. basket load</b>	200 Kgs.	200 Kgs.	200 Kgs.
<b>Rotation</b>	± 400°	± 400°	± 400°
<b>Turnable basket</b>	1.25 x 0.8 x 1.1 m (2 x 41° electrical)		
<b>Power supply</b>	230 V / 16 Amp	Battery	Battery / Diesel
<b>Battery</b>		4x6 V / 240 Ah	4x6 V / 240 Ah
<b>Charger</b>		20 Amp.	20 Amp.
<b>Diesel engine</b>			14 kW / 18,8 HP
<b>Generator</b>			24 V / 22 Amp.
<b>Travelling length</b>	9.20 m	9.20 m	9.20 m
<b>Travelling height</b>	2.10 m	2.10 m	2.10 m
<b>Travelling width</b>	1.70 m	1.70 m	1.70 m
<b>Operational width</b>	4.25 m	4.25 m </td <td>4.25 m</td>	4.25 m
<b>Total weight*</b>	3500 Kgs.	3500 Kgs.	3500 Kgs.
<b>230 V outlet in basket</b>	+	+	+
<b>Proportional controls</b>	+	+	+
<b>Hydraulic stabilizers</b>	+	+	+
<b>Propulsion</b>	0	0	0

+ Standard

O Option

\* All weights are incl. counter weights or the weight of options if any.



## 2900 EZ, 2900 EBZ and 2900 EBDZ

are identical apart from their power sources. Standard features include hydraulic stabilizers with interlocks, basket rotation and proportional controls with dual controls from ground and basket. Design features include a basket mounting that forms a "fly" boom mounted to the top boom section and gives increased outreach over obstacles. The specially designed steel booms made from high and broad profiles allow greater outreach whilst maintaining a high degree of stability and rigidity. Being shorter in travel length than most machines of this type, the 2900 E-series allows improved manoeuvrability and is particularly suited when mounted on to a chassis cab.

**2900 EZ** is main powered 230 V / 16 Amp and is especially suitable, where continuous or extended operation is required.

**2900 EBZ** is powered by a heavy duty 24 V battery pack with built-in charger capable of charging the batteries whilst the platform is in use.

**2900 EBZ** is especially suited for jobs, without mains access.

## Hydraulic propulsion (option)

OMME access platform type 2900 E can be equipped with propulsion powered by the hydraulic system of the access platform and controlled through a delicate hydraulic valve operated from a special drive station platform that provides the operator overall visibility of the machine. When equipped with this option the platform can propel itself around the work site.

In order to provide even more efficiency a unique drive and stabilizer control is also available. When in transit position a swing-up control panel makes it possible to operate both drive and stabilizers without leaving the basket. Convenient and time saving.

**2900 EBDZ** has dual power option battery- and diesel engine especially suited for internal use for all types of jobs and outdoor use. During operation with diesel engine the batteries are recharged by the generator of the engine. The lift can also be delivered with dual power option battery- and petrol engine (EBPZ).