

# 1250 E



[www.ommelift.dk](http://www.ommelift.dk)

## INCREASED OUTREACH MOUNTED ON TRAILER

# OMMELIFT



Quality since 1906

### Head Office

Westside, London Road,  
Hickstead, West Sussex,  
RH17 5LZ

T 01444 88 11 88

F 01444 88 11 99

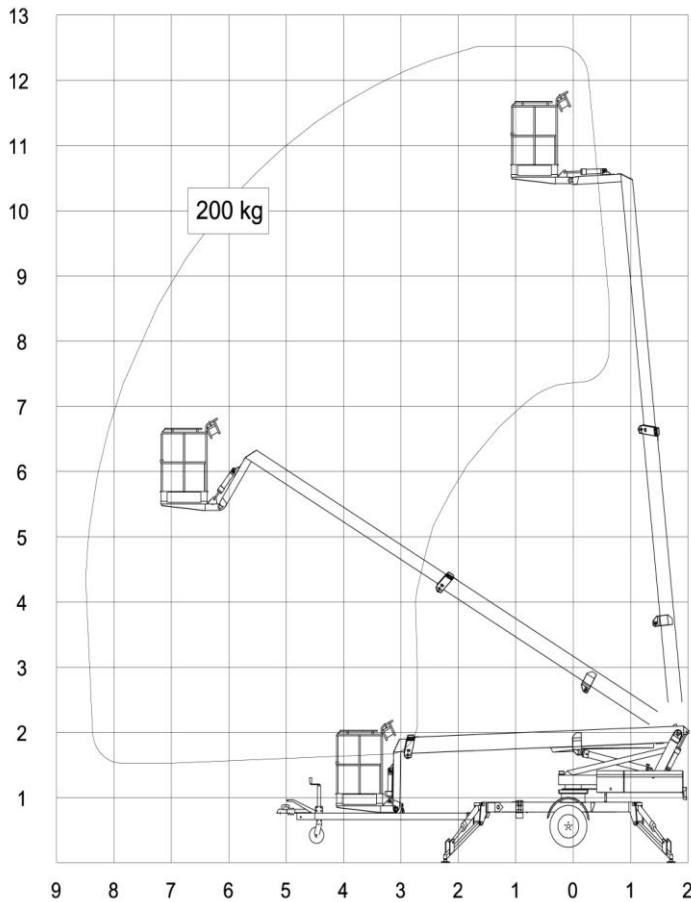
E [hiredesk@facelift.co.uk](mailto:hiredesk@facelift.co.uk)

W [facelift.co.uk](http://facelift.co.uk)

**facelift**  
access and safety made easy

# 1250 E

## Trailer-mounted



Technical data:	1250 E	1250 EB
Max. working height	12.50 m	
Max. outreach	8.50 m	
Max. basket load	200 kg	
Basket size	1.25x0.8x1.1m	
Turnable basket	± 41°	
Rotation	± 400°	
Power supply	230V-10A/16A	Battery
Battery		24V/200Ah/5h
Charger		24 V/30 A
Transport length	7.10 m	
Transport height	1.97 m	
Transport width	1.60 m	
Operational width	4.10 m	
Total weight	1600 kg	1700 kg
Controls	2-step	
Hydraulic stabilizers	+	
Propulsion	+	
230 V outlet in basket	+	

+ Standard

## INCREASED OUTREACH



Angle boom



Propulsion



230 V outlet in basket



Easy transport

- 1250E and 1250EB are identical apart from their power sources. Standard features include hydraulic stabilizers and 2-step dual controls to ground and basket. Design features include a basket mounting that forms a "fly" boom mounted to the top boom section and gives increased outreach over roof edges or other obstacles. The specially designed steel booms made from high and broad profiles allow a great outreach with an exceptional degree of stability and rigidity. The wiring and the telescopic cylinder are protected inside the boom system.
- 1250E is mains powered 230 V and is especially suited, where continuous or extended operation is required.
- 1250EB is powered by a heavy duty (24V/200Ah/5h) battery pack with built in charger capable of charging the batteries whilst the platform is in use. Type 1250EB is especially suited for jobs, without mains access.