

# 1550 E



[www.ommelift.dk](http://www.ommelift.dk)

## LARGE GROUND CLEARANCE TRAILER MOUNTED

# OMMELIFT



Quality since 1906

**Head Office**  
Westside, London Road,  
Hickstead, West Sussex,  
RH17 5LZ

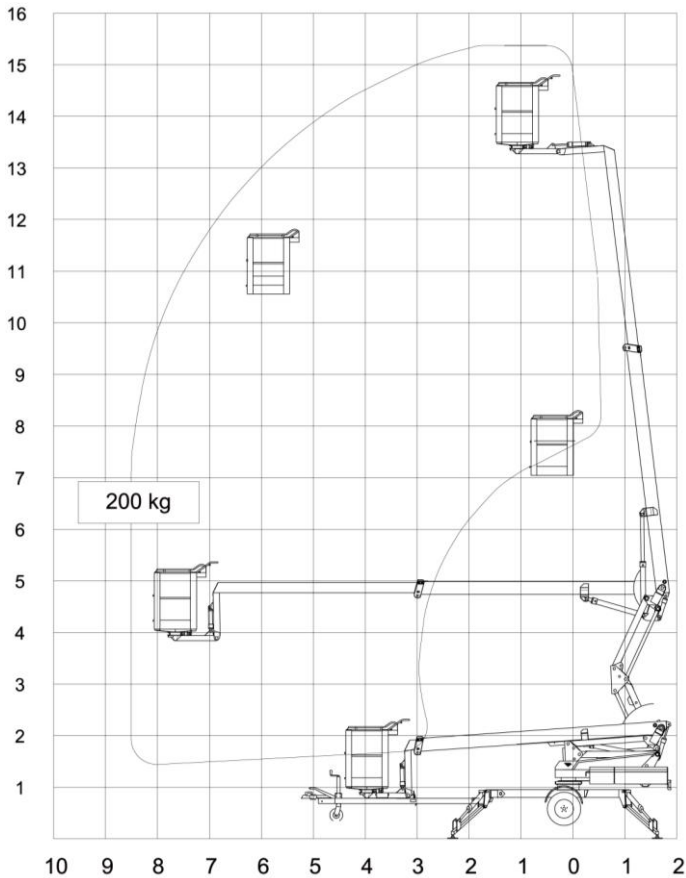
T 01444 88 11 88  
F 01444 88 11 99  
E [hiredesk@facelift.co.uk](mailto:hiredesk@facelift.co.uk)  
W [facelift.co.uk](http://facelift.co.uk)

**facelift**  
access and safety made easy

# 1550 E

## Trailer-mounted

**facelift**  
access and safety made easy



Technical data:	1550 EX	1550 EXB
Max. working height	15.30 m	
Max. outreach	8.50 m	
Max. basket load	200 kg	
Basket size	1.25x0.8x1.1m	
Rotation	± 400°	
Power supply	230V/16A-10A	24V200AH/5h
Transport length	7.25 m	
Transport height	1.99 m	
Transport width	1.60 m	
Operational width	4.12 m	
Total weight approx.	1950 kg	2000 kg
230 V outlet in basket	+	
2 – step controls	+	
Propulsion	+	
Turnable basket	+	

+ standard

## LARGE GROUND CLEARANCE



Angle boom



Propulsion



Easy transport



Turnable basket

- 1550EX is powered by 230 V mains and is especially suitable where continuous or extended operation is required.
- 1550EXB is powered by a heavy duty (24V/200Ah/5h) battery pack. Operation is possible independently of 230 V mains connection.
- Transportation is safe when towed by small vehicles and 4 x 4 pick-ups.
- The turnable basket makes it possible for 2 persons to operate parallel with e.g. facades. Equipped with an unfolding scissor system giving the lift an increased up and over outreach over high obstacles. When operating the scissor system up and down the basket will follow a vertical line. Furthermore the lift has no tail swing at rotation. The telescopic cylinder and all electric wiring are protected inside the telescopic boom.
- Fitted with straightforward controls in basket as well as at ground level. Operational levers for the hydraulic stabilizers are placed centrally on the chassis.
- The high and low speed controls ensure steady and smooth movements. Standard features include hydraulic propulsion, hydraulic stabilizers and turnable basket. When equipped with hydraulic propulsion the platform can propel itself around the work site. Right hand side operation.