

# 1850 E



[www.ommelift.dk](http://www.ommelift.dk)

## TRAILER MOUNTED BOOM PLATFORM

# OMMELIFT



Quality since 1906

### Head Office

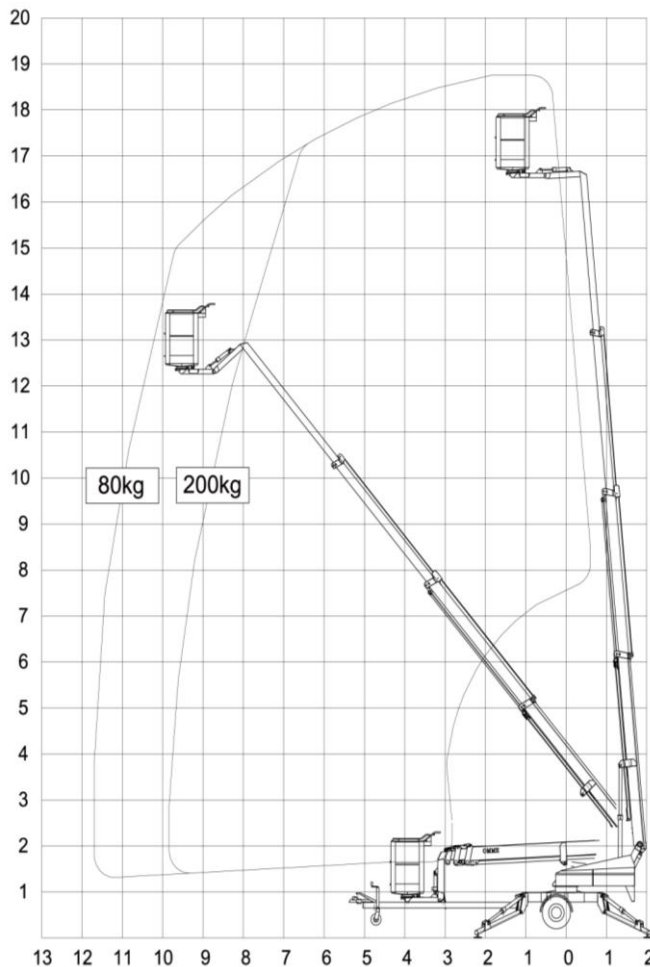
Westside, London Road,  
Hickstead, West Sussex,  
RH17 5LZ

T 01444 88 11 88  
F 01444 88 11 99  
E [hiredesk@facelift.co.uk](mailto:hiredesk@facelift.co.uk)  
W [facelift.co.uk](http://facelift.co.uk)

**facelift**  
access and safety made easy

# 1850 E

## Mounted on trailer



Technical data:	1850 E	1850 EB	1850 EBD
Max. working height	18.60 m		
Max. outreach	10.30 m		
Max. basket load	200 kg		
Rotation	± 400°		
Basket size	1.25x0.8x1.1m		
Turnable basket	± 41°		
Power supply	230V/16A	Battery	Battery/diesel
Battery		24V/200Ah/5h	24V/200Ah/5h
Charger		24V/30A	24V/30A
Diesel engine			14kW/18.8hp
Generator			24V/22A
Transport length	7.20 m	7.20 m	7.47 m
Transport height	2.10 m		
Transport width	1.70 m		
Operational width	4.25 m		
Total weight	2230 kg	2350 kg	2480 kg
Controls	Proportional		
Hydraulic stabilizers	+		
Hydraulic propulsion	+		
230V outlet in basket	+		

O Option

## A STABLE LIFT – ALSO DURING TRANSPORT



Angle boom



Propulsion



Easy control



Transport

- 1850E, 1850EB and 1850 EBD are identical apart from their power sources. Standard features include hydraulic stabilizers with interlocks, basket rotation and proportional controls with dual controls to ground and basket. Design features include a basket mounting that forms a "fly" boom mounted to the top boom section and gives increased outreach over obstacles. The specially designed steel booms made from high and broad profiles allow greater outreach whilst maintaining a high degree of stability and rigidity. Being shorter in travel length than most machines of this type, the 1850E-series allows improved manoeuvrability and is particularly suited when mounted on to a chassis cab.
- 1850E is mains powered 230 V/16 A and is especially suited, where continuous or extended operation is required.
- 1850EB is powered by a heavy duty 24 V battery pack with built-in charger capable of charging the batteries whilst the platform is in use. 1850EB is especially suited for jobs, without mains access.