

# 2900 E



[www.ommelift.dk](http://www.ommelift.dk)

## TRAILER MOUNTED BOOM PLATFORM

# OMMELIFT



Quality since 1906

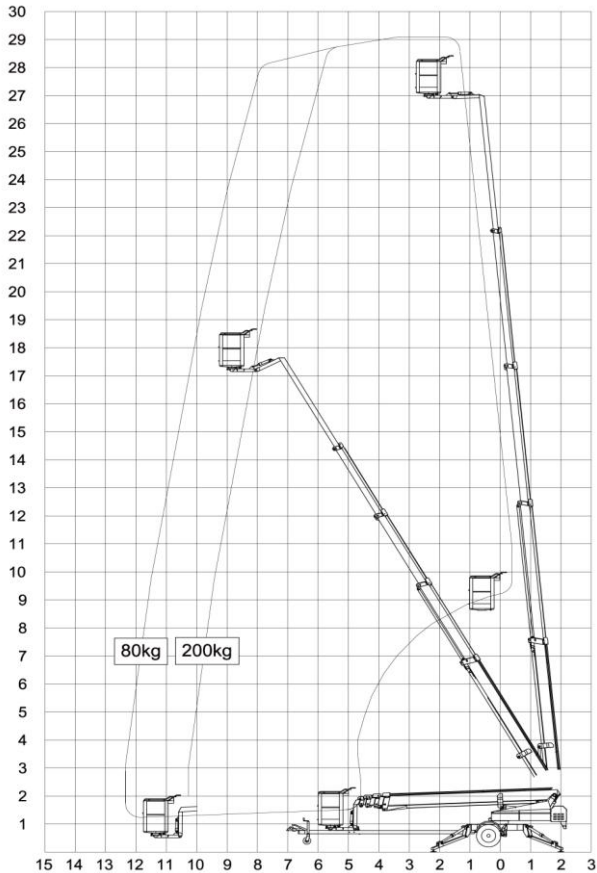
**Head Office**  
Westside, London Road,  
Hickstead, West Sussex,  
RH17 5LZ

T 01444 88 11 88  
F 01444 88 11 99  
E [hiredesk@facelift.co.uk](mailto:hiredesk@facelift.co.uk)  
W [facelift.co.uk](http://facelift.co.uk)

**facelift**  
access and safety made easy

# 2900 E

## Mounted on trailer



Technical data:	2900 E	2900 EB	2900 EBD
Max. working height	29.00 m		
Max. outreach	12.30 m		
Max. basket load	200 kg		
Basket size	1.25x0.8x1.1m		
Turnable basket	± 41°		
Rotation	± 400°		
Power supply	230V/16A	Battery	Battery/diesel
Batteries		24V/200Ah/5h	24V/200Ah/5h
Charger		24 V/30 A	24 V/30 A
Diesel engine			14kW/18.8hp
Generator			24 V/22 A
Transport length	9.20 m		
Transport height	2.10 m		
Transport width	1.70 m		
Operational width	4.25 m		
Total weight	3400 kg	3400 kg	3500 kg
Controls	Proportional		
Hydraulic stabilizers	+		
Hydraulic propulsion	+		
230 V outlet in basket	+		

+ Standard

## OVERVIEW – 29 METER



Angle boom



Propulsion



Easy control



Transport

- 2900E, 2900EB and 2900EBD are identical apart from their power sources. Standard features include hydraulic stabilizers with interlocks, basket rotation and proportional controls with dual controls from ground and basket. Design features include a basket mounting that forms a "fly" boom mounted to the top boom section and gives increased outreach over obstacles. The specially designed steel booms made from high and broad profiles allow greater outreach whilst maintaining a high degree of stability and rigidity. Being shorter in travel length than most machines of this type, the 2900E-series allows improved manoeuvrability.
- 2900E is main powered 230 V/16 A and is especially suitable, where continuous or extended operation is required.
- 2900EB is powered by a heavy duty 24 V battery pack with built-in charger capable of charging the batteries whilst the platform is in use. 2900EB is especially suited for jobs, without mains access.