

RUTHMANN
HIGHquality



Stability and dynamics for your work at great heights.

Are you looking for equipment which you can use effectively with easy handling and which grants you a maximum of safety and stability also in great heights?

The **RUTHMANNSTEIGER® T 435** was especially designed for your demanding standard of performance. It offers you wor-

king heights of up to 43,70 metres. With its lateral outreach to either side of up to 25,00 metres you can cover a large working range. The 5-fold telescopic lifting boom and the great swivelling angle of the telescopic articulated top boom Rüssel® (cage lifting arm) grants you a maximum of moveability and

flexibility. These are performance characteristics, you depend on during your jobs as cleaning company, power supply company, horticultural company or scaffolder, painter, mounting company and also as rental company for hydraulic aerial platforms.



RUTHMANNSTEIGER® T 435

No matter, if you have to work at trees, inside halls, under low bridges or across obstacles; this machine brings you also under difficult working conditions fast and safely to the desired place of work. The horizontal-vertical stabilizing jacks which can be extended individually and in pairs ensure you also in narrow streets a smooth working procedure. Under very confined space conditions you can align the stabilizing jacks unilaterally and extend them even within the vehicle profile under very confined space conditions.

Through the working cage installed in the rear you can fast and comfortably come into starting position for doing your job. Only one step and you are in the operating centre on the cage and can directly start the navigation to your desired place of work.

The working cage offers your staff sufficient place and grants you thanks to its high carrying capacity of 350 kg a maximum of safety even when taking additional tools and material.

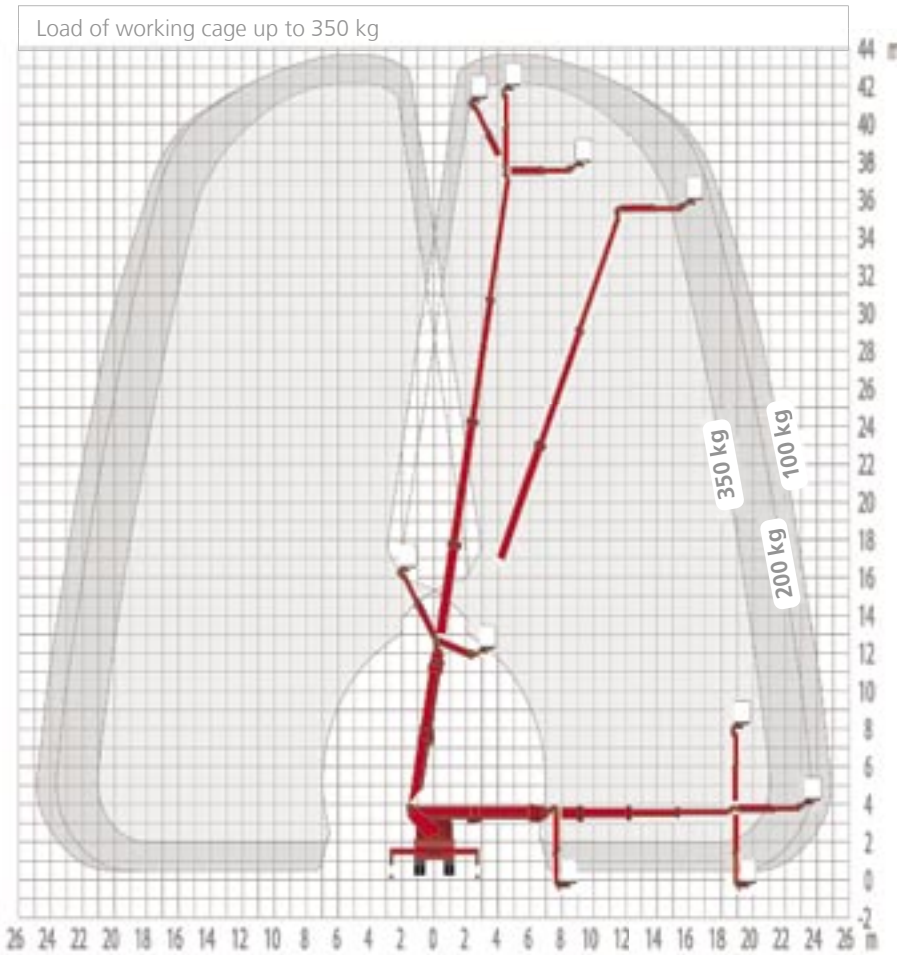
For the use on difficult terrain you can order this STEIGER®, the standard version of which is mounted on a 2-axle-truck-chassis, also with allwheel-drive.

Contact us – by phone, fax or E-mail. We would be pleased to give you detailed information concerning the performance spectrum of our proven STEIGER® and demonstrate profit and advantages arising for you.

RUTHMANNSTEIGER® T 435

Working height:	43,70 m
Lifting height:	41,70 m
Lateral outreach:	25,00 m*
Range of rotation:	450°
Swivelling angle of articulated top boom Rüssel®:	190°
Size of working cage:	1,70 x 1,00 m
Carrying capacity of working cage:	350/200 kg
Telescopic extension:	25,20 m
Permissible siting inaccuracy:	0°
Total height:	3,70 - 3,80 m
Perm. total weight:	from 18.000 kg

* Depending on load and execution



All dimensions in meters. All measurements and weights are approximate and refer to the standard basic execution. Technical alterations reserved. Steiger®, Gelenksteiger®, and Rüssel® are registered trademarks of Anton Ruthmann GmbH & Co. KG