



**Features**

- New entry level model from Bronto's XDT modular design family
- Easy to use straight telescopic boom with fixed cage boom
- Rigid profile design and high tensile steel for superior boom stiffness
- Geometric outreach control for virtually zero tolerance
- Energy chain cartridge system for fast and easy maintenance inside the boom
- Mounted onto 4x2 or 4x4 18 tonnes chassis
- Zero tail swing
- Automatic outrigger levelling

- Fully variable outrigger jacking
- Variable cage load with optimised outreach
- 2 x 90 degrees cage slewing
- SWL of 700 kg
- Fault finding system

**Optional items**

- Boom and cage winch options
- Changeable working cage options (e.g. rotating TV camera cage)
- Over 200 other custom features optionally available
- GSM telecontrol for fault finding and remote calibration



# S 36 XDT

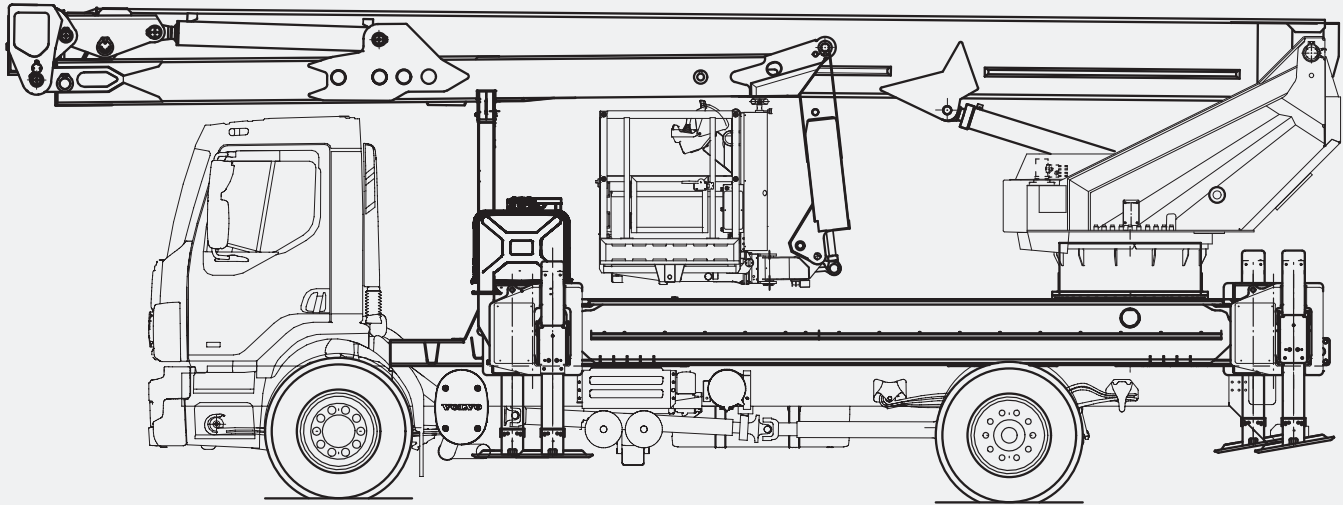
XDT RANGE


Bronto Skylift - Above All

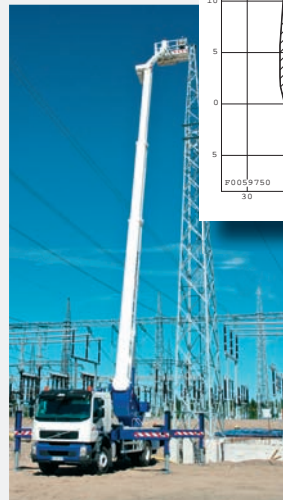
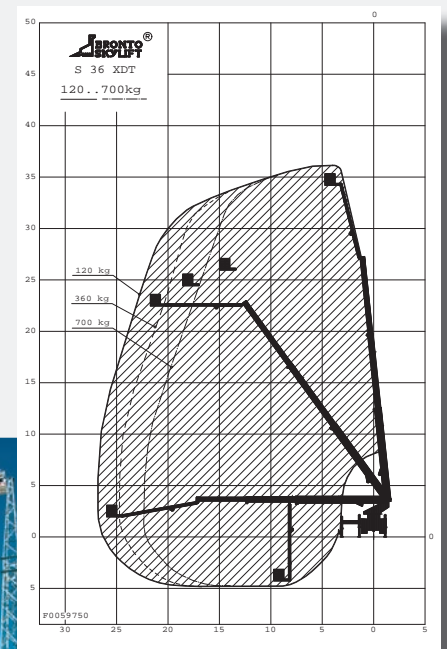


Above **all**

# S 36 XDT



|  | Technical data            |
|--|---------------------------|
| Max. working height  | 36 m                      |
| Max. working side outreach   | 27 m                      |
| Safe working cage load   | 700 kg                    |
| Working cage dimensions  | 1,05 m X 2,4 m (3,7 m)    |
| Working cage slewing (deg)   | 90 / 90                   |
| Outrigger width (c/c)  | 6,2 m                     |
| Transport height, approx.  | 3,7 m                     |
| Transport length, below  | <10 m                     |
| Typical gross vehicle weight, GVW (depending on chassis)                           | <18 t                     |
| Chassis (layout above)   | VOLVO<br>FEE 42R/4x2/5000 |
| Variable jacking   | Standard                  |
| Automatic levelling  | Standard                  |
| Geometric outreach   | Standard                  |



# S 36 XDT

**Head Office**  
Westside, London Road,  
Hickstead, West Sussex,  
RH17 5LZ

T 01444 88 11 88  
F 01444 88 11 99  
E [hiredesk@facelift.co.uk](mailto:hiredesk@facelift.co.uk)  
W [facelift.co.uk](http://facelift.co.uk)

**facelift**  
access and safety made easy