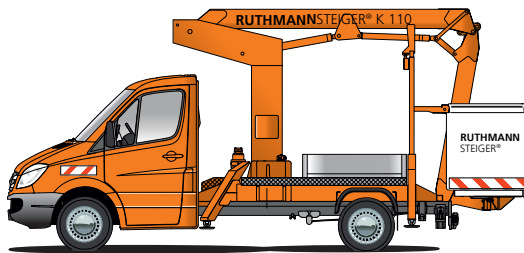


RUTHMANN
professionals at work

STEIGER® K 110



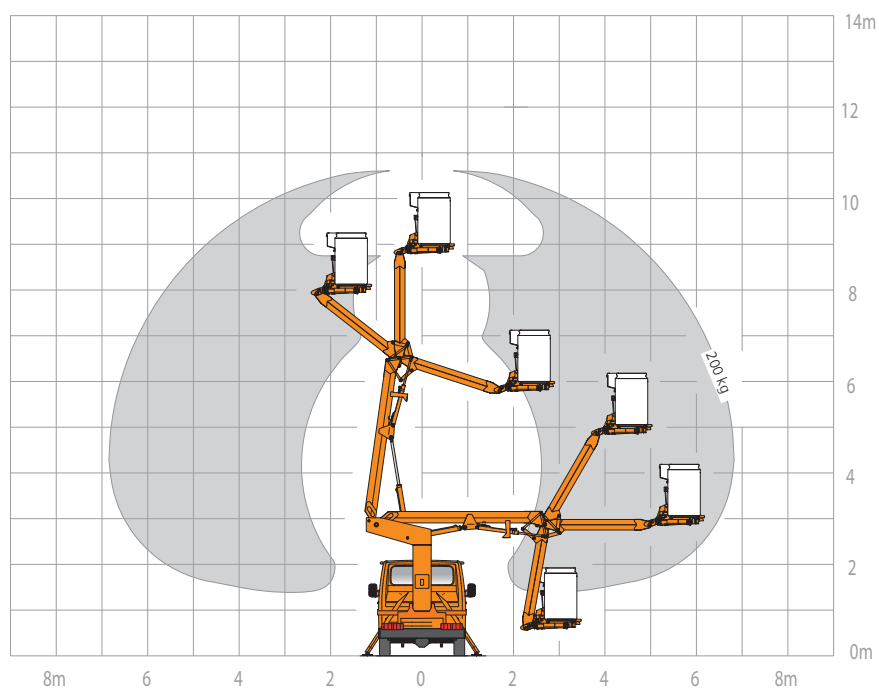
RUTHMANNSTEIGER® K 110 The flexible and speedy one within

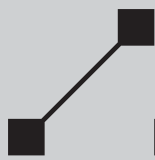
- 11.0 m working height
- 7.0 m outreach
- 160° swivelling angle of the RÜSSEL® (jib)
- shunting movements: moving the STEIGER® with lifted jib (RÜSSEL®)
- permissible inclination 5°
- safety jacking mechanism in the vehicle profile
- fast jacking operation with automatic positioning system
- steel boom system
- interior power control
- twice insulation against 1.000 volt
- standard with covered polyester cage



facelift
access and safety made easy

For further information go to: www.ruthmann.de/k110en





STEIGER® K 110

During maintenance, repair and cleaning of traffic lights, street lighting and traffic systems you as a local authority must especially be in a position to use your platforms immediately and agile. For you it is decisive that you can carry out your jobs without being an obstacle to the moving traffic.

The **RUTHMANNSTEIGER® K 110** was especially designed for the efficient and smooth procedure of your local jobs. It offers you safe working in heights of up to 11,00 metres. Up to a working height of 7,00 metres this robust machine can even be used easily without extended stabilizing jacks. In this way you can e.g. carry out maintenance jobs at street lighting systems fast and efficiently without having to bring the machine into position again each time.

With a permissible siting inaccuracy of 5° the construction of the carrier-chassis grants you also on roads with a slight slope or gradient highest stability. You can use this machine also at places with an inclination of up to 9° without any reduction of the stability of the carrier-chassis.

The working platform with a cage carrying capacity of 200 kgs brings your staff and equipment safely and fast to the desired place of work. Also in hardly accessible working places you can rely on the necessary agility of the **STEIGER®** thanks to the swivelling

angle of the **RÜSSEL®** (cage lifting arm).

Contact us – by phone, fax or E-mail. We would be pleased to give you detailed information concerning the performance spectrum of our proven **STEIGER®** and demonstrate profit and advantages arising for you.



RUTHMANNSTEIGER® K 110				
	Working height	11,00 m		Perm. siting inclination 5°
	Lifting height	9,00 m		Perm. total weight 3.500 kg
	Outreach	6,60 m		Range of rotation 450°
	Size of working cage	1,30 x 1,00 m		Swivelling angle of the jib/ RÜSSEL® 160°
	Carrying capacity of working cage	200 kg		Driving Licence B / 3
	Overall height	3,10 m - 3,20 m		

Valid from: 00/0000 Produktdatenblatt_K110.indd