





# Mobile elevating work platform WT 170

## Product information

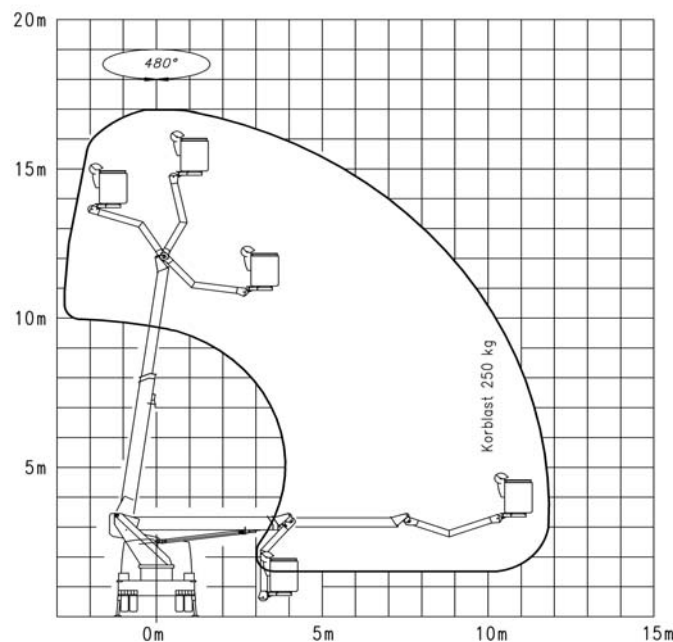
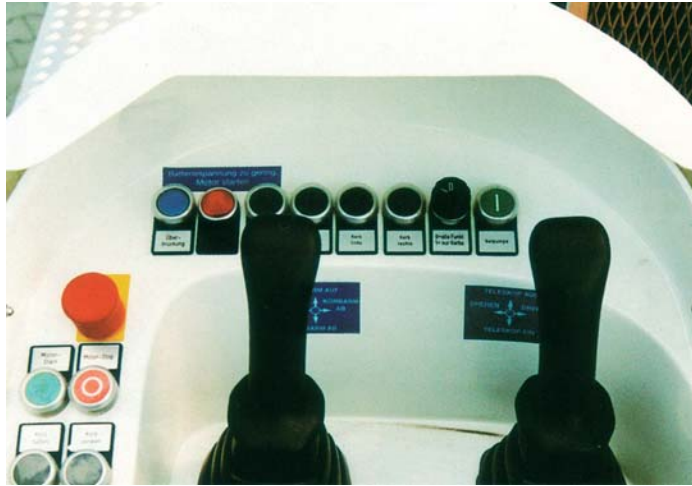
- Telescopic mobile elevating work platform with a 2-section extension boom and a cage boom with 170° action angle
- 4 vertical stabilisers with moveable spreader plates
- Cage placed at the rear of the vehicle, therefore comfortable access from the ground and direct reach for the object
- Assembled onto 7,49 t chassis

## Special features

- Excellent manoeuvrability in traffic through compact and lightweight design
- No sideways overhang of the turntable, therefore no hindrance of the traffic
- High levelling capacity of the stabilising system
- Smooth and jolt free running of the telescopes through optimised slide bearings and deformation resistant hexagon profiles
- Forced guide control of the hydraulic cage levelling system
- Finely adjustable and robust hydraulic control by joysticks from the cage
- Bearings are maintenance free
- Optimal protection of all supply- and control lines from external damage; prevents breakdowns and costly repairs

## Operation areas

- Rental companies
- Municipal authorities
- Municipal services
- Power supply companies
- Tree cutters
- Aeroplane maintenance companies
- Forestry workers
- Glass and exterior cleaning
- Craftsmen
- Pest control
- Telecommunication companies
- TV and film work
- Transport companies



## Technical Data WT 170

Working height	max. 17,00 m
Cage floor height	max. 15,00 m
Sideways outreach**	max. 11,80 m
Cage load	max. 250 kg
Turntable rotation with end-stop damping	480°
Cage boom angle	170°
Swivel range of the cage	2 x 45°

Measurements of the cage (L x W x H)	1,60 m x 0,80 m x 1,10 m
Travelling length*	approx. 7,47 m
Travelling height*	approx. 3,50 m
G.V.W*	min. 7,49 t

\* depending on the vehicle  
 \*\* depending on pivoting angle, vehicle, type of stabilisation and cage load

- Installation and assembly companies
- Service companies

## Standard equipment

- GRP cage, 2 x 45° swivable
- 2 anchor points for safety harnesses
- Possibility to change the cage
- Double insulation against 1000 V
- Emergency control at the turntable, usable as secondary control
- Stable chassis covering of aluminium bulb plate
- Hydraulic pump
- Engine start/stop at the cage
- Electric power line 230 V/10 A
- Biologic hydraulic oil
- Buzzer in the driver's cab; call button in the cage
- Bracket for the spare wheel
- Mud guards for the rear wheels
- Painting of the unit as required
- Assembly of the platform onto a suitable chassis
- Tested by a notified body, CE-Mark, Declaration of Conformity, Test certificate
- Check against the local vehicle and traffic regulations (StVZO)
- Extensive anticorrosive package

## Additional equipment

- Aluminium side walls mounted on the chassis decking
- Tool and material box
- Road marker cones with fixing device
- Spreader plates
- Halogen working light
- Cage boom movement without stabilising
- Timber handrail on the cage
- Holding device for chain saw
- Dividing screen

(More additional equipment on request)

We reserve our right for alterations in technology, development and equipment without prior notice.