

### Specifications

Models	Z-34/22 IC 2WD		Z-34/22 IC 4WD	
Measurements	Metric	US	Metric	US
Working height maximum*	12.52 m	40 ft 6 in	12.62 m	40 ft 10 in
Platform height maximum	10.52 m	34 ft 6 in	10.62 m	34 ft 10 in
Horizontal reach maximum	6.78 m	22 ft 3 in	6.78 m	22 ft 3 in
Up and over clearance maximum	4.57 m	15 ft	4.6 m	15 ft 1 in
<b>A</b> Platform length	0.76 m	2 ft 6 in	0.76 m	2 ft 6 in
<b>B</b> Platform width	1.42 m	4 ft 8 in	1.42 m	4 ft 8 in
<b>C</b> Height - stowed	2.00 m	6 ft 7 in	2.06 m	6 ft 9 in
<b>D</b> Length - stowed	5.64 m	18 ft 6 in	5.66 m	18 ft 7 in
<b>E</b> Storage height	2.26 m	7 ft 5 in	2.29 m	7 ft 6 in
<b>F</b> Storage length	4.08 m	13 ft 5 in	4.11 m	13 ft 6 in
<b>G</b> Width	1.73 m	5 ft 8 in	1.85 m	6 ft 1 in
<b>H</b> Wheelbase	1.88 m	6 ft 2 in	1.88 m	6 ft 2 in
<b>I</b> Ground clearance - center	0.15 m	6 in	0.15 m	6 in

### Productivity

Lift capacity	227 kg	500 lbs	227 kg	500 lbs
Platform rotation	180°	180°	180°	180°
Vertical jib rotation	139°	139°	139°	139°
Turntable rotation	355° non-continuous		355° non-continuous	
Turntable tailswing	zero	zero	zero	zero
Drive speed - stowed	6.4 km/h	4.0 mph	6.4 km/h	4.0 mph
Drive speed - raised**	1.1 km/h	0.68 mph	1.1 km/h	0.68 mph
Gradeability - stowed***	35%	35%	35%	35%
Turning radius - inside	1.75 m	5 ft 9 in	1.80 m	5 ft 11 in
Turning radius - outside	4 m	13 ft 1 in	4.11 m	13 ft 6 in
Controls	12V DC	proportional	12V DC	proportional
Tyres - foam filled	23 x 37 cm	9 x 14.5 in	25.4 x 42 cm	10 x 16.5 in

### Power

Power source	Tier IV Kubota D-1105 3-cylinder diesel 26 hp (19.4 kW) Tier IV Perkins 403 D11 3-cylinder diesel 26.4 hp (19.7 kW)			
Auxiliary power unit	12V DC	12V DC	12V DC	12V DC
Hydraulic tank capacity	71.9 L	19 gal	71.9 L	19 gal
Fuel tank capacity	35.2 L	9 gal	35.2 L	9 gal

### Sound & Vibration Levels

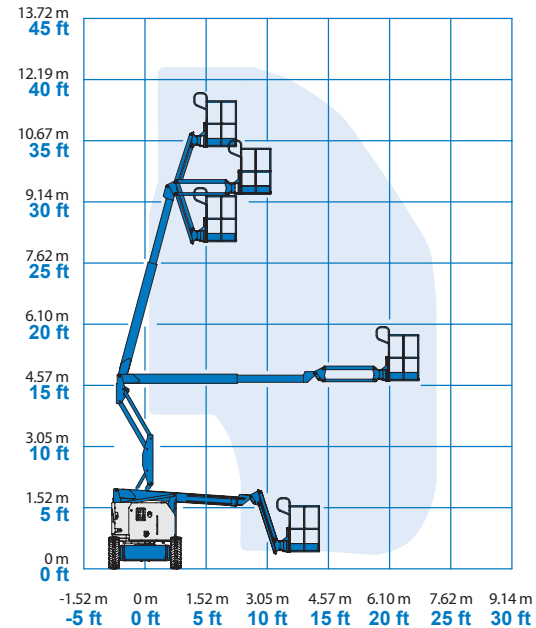
Sound pressure level (ground workstation)	<81 dBA	<81 dBA	<81 dBA	<81 dBA
Sound pressure level (platform workstation)	<80 dBA	<80 dBA	<80 dBA	<80 dBA
Vibration	<2.5 m/s <sup>2</sup>	<8 ft 2 in/s <sup>2</sup>	<2.5 m/s <sup>2</sup>	<8 ft 2 in/s <sup>2</sup>

### Weight\*\*\*\*

CE Industrial foam filled tyres	4,793 kg	10,566 lbs	N/A	N/A
CE rough terrain foam filled tyres	4,892 kg	10,786 lbs	4,929 kg	10,986 lbs

**Standards Compliance** EU Directives: 2006/42/EC - Machinery (harmonized standard EN280:2001+A2:2009); 2004/108/EC (EMC); 2000/14/EC (Outdoor Noise)

### Range Of Motion Z-34/22 IC

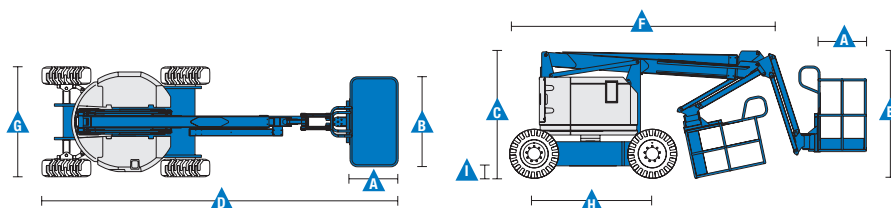


\* The metric equivalent of working height adds 2 m to platform height. U.S. adds 6 ft to platform height.

\*\* In lift mode (platform raised), the machine is designed to operate on firm, level surfaces only.

\*\*\* Gradeability applies to driving on slopes. See operator's manual for details regarding slope ratings.

\*\*\*\* Weight will vary depending on options and/or country standards.



### Features

Standard Features	Easily Configured To Meet Your Needs	Options & Accessories
-------------------	--------------------------------------	-----------------------

#### Measurements

##### Z-34/22 IC 2WD

- 12.52 m (40 ft 6 in) working height
- 6.78 m (22 ft 3 in) horizontal reach
- 4.57 m (15 ft) up and over clearance
- Up to 227 kg (500 lbs) lift capacity

##### Z-34/22 IC 4WD

- 12.62 m (40 ft 10 in) working height
- 6.78 m (22 ft 3 in) horizontal reach
- 4.57 m (15 ft) up and over clearance
- Up to 227 kg (500 lbs) lift capacity

#### Productivity

- 1.22 m (4 ft) jib with 139° working range
- Self-levelling platform
- Hydraulic platform rotation
- Proportional joystick controls
- Thumb rocker steer
- Drive enable
- AC power cord to platform
- Horn
- Hour meter
- Tilt alarm
- Descent & travel alarm
- Flashing beacon
- 355° non-continuous turntable rotation
- Locking turntable covers
- Zero tailswing and front arm swing
- Two speed wheel motors
- Certified load sensor

#### Power

- 12 V DC auxiliary power

#### Platform Options

- Steel 1.42 m (4 ft 8 in) (standard)

#### Jib

- Articulating 1.22 m (4 ft) jib boom

#### Engine Options

- Tier IV Kubota D-1105 3-cylinder diesel 19.4 kW (26 hp)
- Tier IV Perkins 403 D11 3-cylinder diesel 19.7 kW (26.4 hp)

#### Drive Options

- 2WD
- 4WD

#### Tyre Options

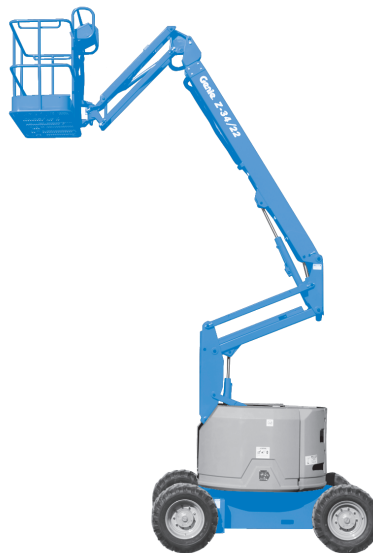
- Industrial foam-filled (standard 2WD)
- Industrial non-marking foam-filled
- Rough terrain foam-filled (standard 4WD)

#### Productivity Options

- Platform top auxiliary rail
- Air line to platform
- Power to platform (incl. plug, socket and ground fault interrupt leakage on request)
- Work lights package (2 on chassis, 2 on platform)
- Aircraft protection kit <sup>(1,2)</sup>: platform foam padding and padded disable system
- Hostile environment kit <sup>(2)</sup>: cylinder bellow, boom wiper seals and platform control box cover
- Biodegradable hydraulic oil <sup>(2)</sup>
- Tilt cut-out option
- Track & Trace <sup>(3)</sup> (Gps unit providing machine location & operating information)
- Lockable platform control box cover
- Tool tray
- Operator Protective Alarm

#### Power Options

- Diesel muffler with spark arrestor <sup>(2)</sup> (Perkins only)
- Engine gauge package <sup>(2)</sup>: oil pressure, temperature & voltage
- AC Generator Packages (110 V / 60 Hz - 220 V / 50 Hz, 2200 W) <sup>(2)</sup>
- Low temperature cut-out module
- Engine heater option <sup>(4)</sup>
- Refinery kit with spark arrestor and electric or mechanical Chalmers valve <sup>(4)</sup>



<sup>(1)</sup> Reduces platform load capacity to 199,6 kg (440 lbs)

<sup>(2)</sup> Factory - fit option only

<sup>(3)</sup> Includes a first 2 years subscription

<sup>(4)</sup> Available with Kubota engine only

**Head Office**  
Westside, London Road,  
Hickstead, West Sussex,  
RH17 5LZ

T 01444 88 11 88  
F 01444 88 11 99  
E hiredesk@facelift.co.uk  
W facelift.co.uk

**facelift**  
access and safety made easy